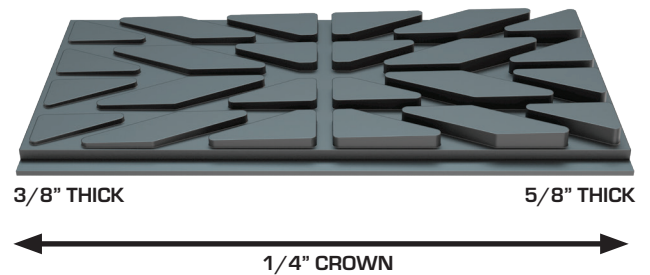
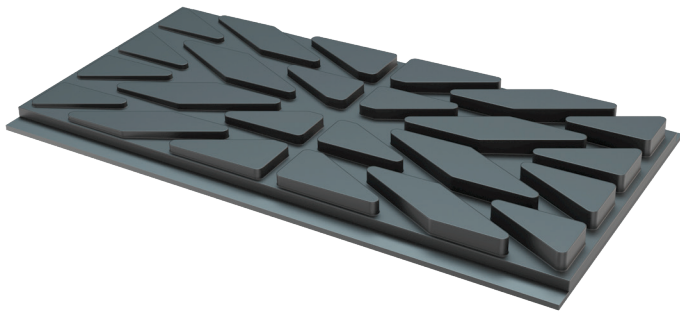


TAPERED EDGE CROWN LAGGING



PPI's Tapered Edge Crown Lagging provides a smooth transition from full lagging thickness as it tapers down providing a 1/4" of crown over the span of 10". This gradual taper provides a belt-friendly crown in the face of the pulley, keeping the belt centered. The scalloped backer plate allows the product to be field formable to fit a wide range of pulley diameters.

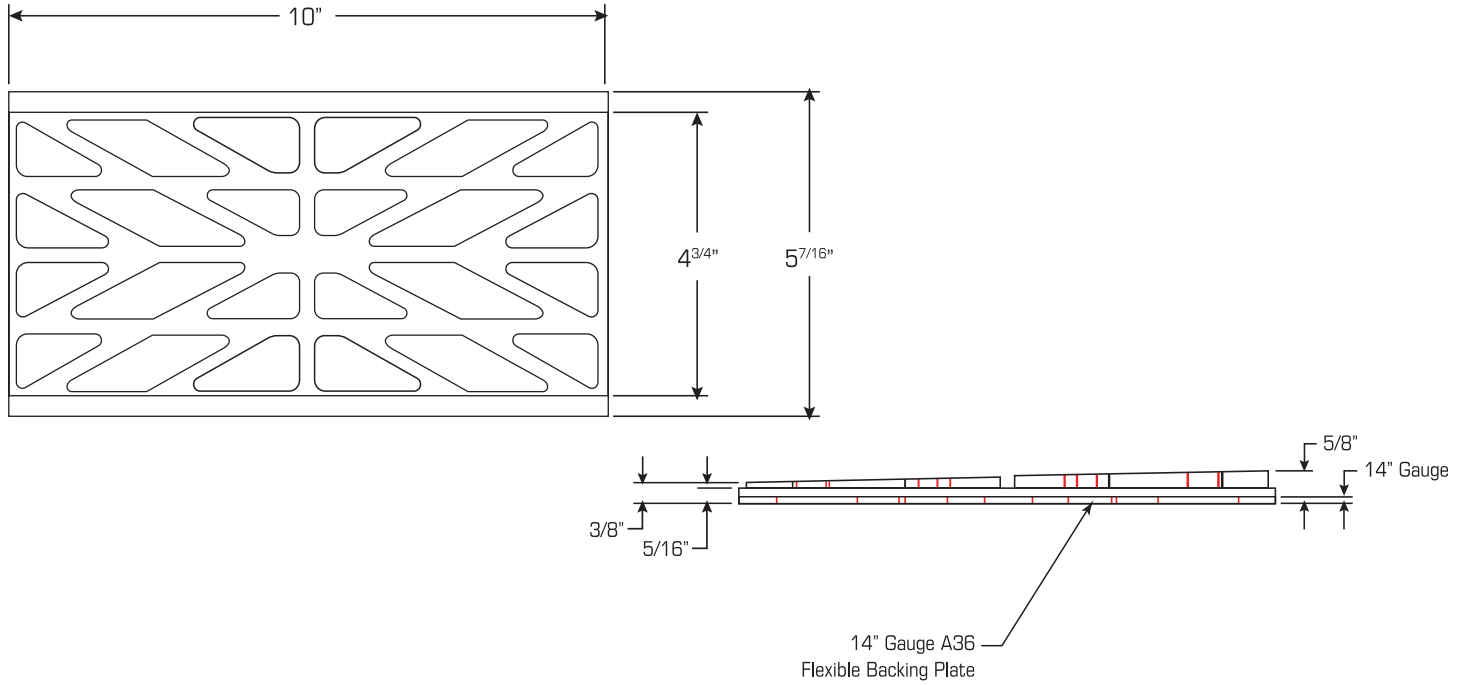
FEATURES AND BENEFITS

- Provides gradual taper
- Provides full belt support across the width of the pulley
- Field formable backer plate
- One size fits wide variety of diameters

Part Number: 505019

Description: 1/4" crown X 10" long; Anti-Static, Oil Resistant, Fire Retardant (SOF/FRAS) Rubber

DIMENSIONAL INFORMATION



SCALLOPED BACKER PLATE IS FIELD FORMABLE

