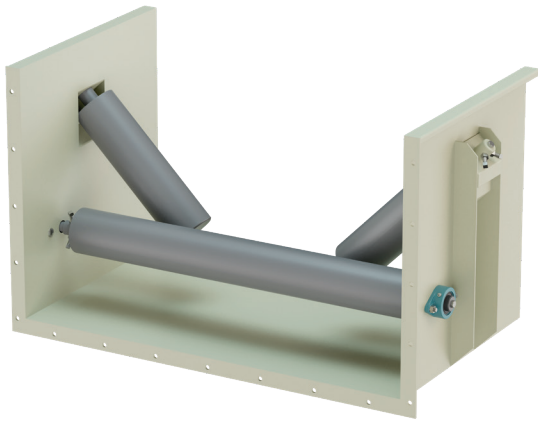
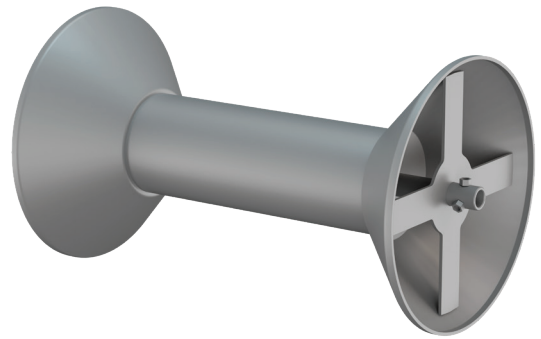


TRI-ROLL



CONTOUR



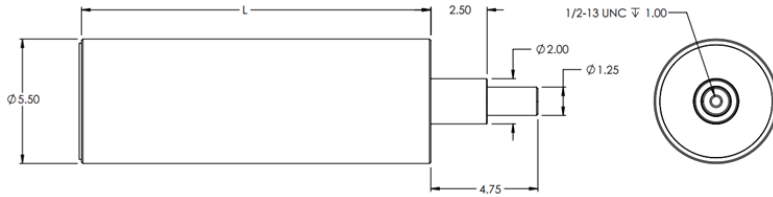
PPI's enclosed conveyor idlers enable operators to easily retrofit idlers into their existing enclosed grain conveyors. This series features the Tri-Roll idler, specifically designed for high-capacity applications requiring exceptional performance in demanding environments. For lighter-duty grain handling, the Contour idler is engineered to efficiently meet the needs of medium-duty operations. With PPI's extensive expertise in manufacturing conveyor components, grain handling operations of all sizes can trust that these idlers will deliver reliable performance, even in the most challenging conditions.

FEATURES AND BENEFITS

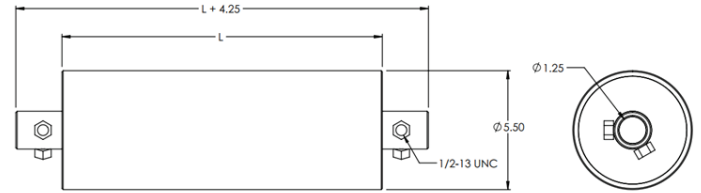
- Designed to retro fit majority of applications
- Engineered utilizing PPI's conveyor component expertise
- TRI-WING Rolls designed with maintenance free ball bearings
- Heavy duty construction promoting long trouble free performance
- Custom roll lengths available upon request

TRI-ROLL SERIES

TRI-WING ROLL



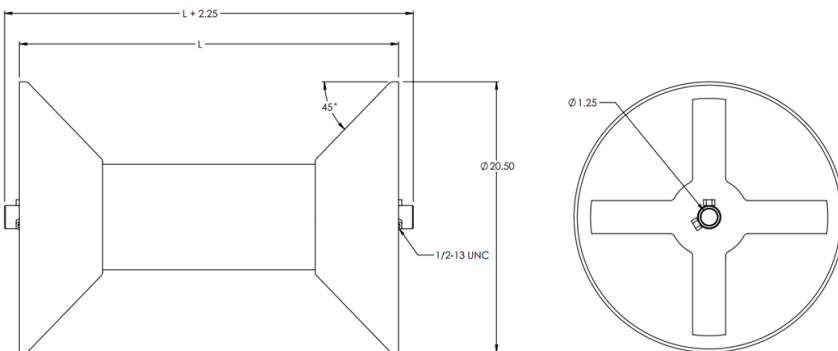
TRI-CENTER ROLL



TRI-WING ROLL			
Belt Width	Part Number	L	Weight
18	43851-10.00	10.00	21
24	43851-12.00	12.00	25
30	43851-13.75	13.75	29
36	43851-15.50	15.50	32
42	43851-17.50	17.50	36
48	43851-19.50	19.50	39
54	43851-20.50	20.50	41
60	43851-22.00	22.00	43
66	43851-24.00	24.00	46
72	43851-26.00	26.00	48

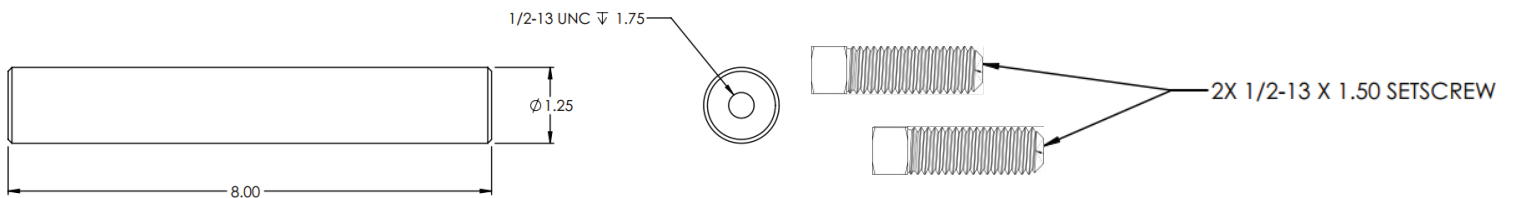
TRI-CENTER ROLL			
Belt Width	Part Number	L	Weight
18	43852-18	14.75	28
24	43852-24	20.75	37
30	43852-30	26.75	46
36	43852-36	32.75	55
42	43852-42	38.75	64
48	43852-48	44.75	73
54	43852-54	50.75	82
60	43852-60	56.75	91
66	43852-66	62.75	100
72	43852-72	68.75	109

CONTOUR ROLL



IN-GRAIN CONTOUR ROLL			
Belt Width	Part Number	L	Weight
18	43853-18	16.75	90
22	43853-22	20.75	98
26	43853-26	24.75	106
30	43853-30	28.75	115
36	43853-36	34.75	127
42	43853-42	40.75	139
48	43853-48	46.75	151
54	43853-54	52.75	164

ENCLOSED CONVEYOR IDLER STUB SHAFT KIT - PART NUMBER: 43854



WWW.PPI-GLOBAL.COM | SALES@PPI-GLOBAL.COM

Product shown are for illustrative purposes only and may display optional accessories or components. Please contact your sales representative for more information on product specifications. PPI respectively reserves the right to make changes in engineering, design and specifications; add improvements; or discontinue manufacturing at any time without notice obligation. PPI and its respective logos are trademarks of Precision, Inc. in the US and or other countries.