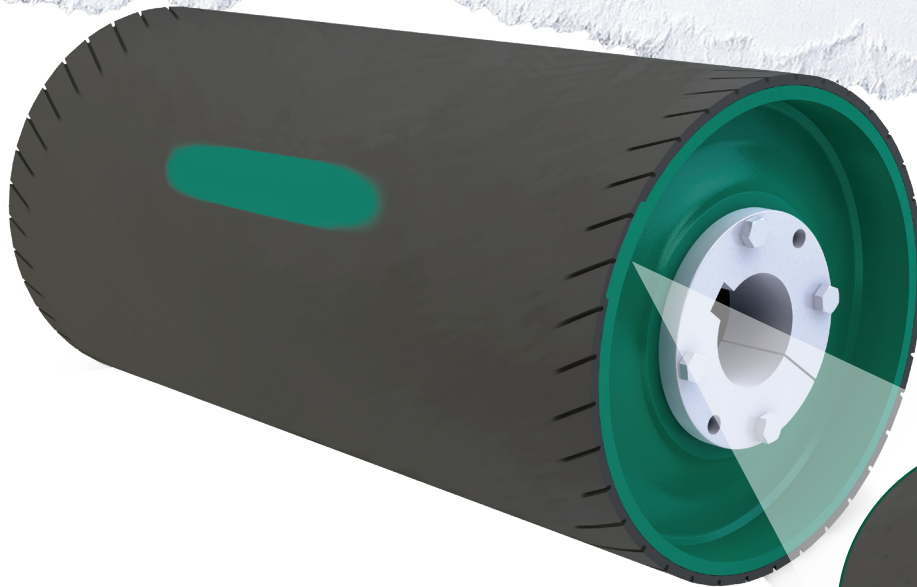


# LAGGING WEAR INDICATOR



*The pulley displayed is representing worn lagging with a visible indicator warning.*



There is an endless list of things at a quarry or mine that the maintenance department has to deal with. PPI strives to make their job easier.

PPI's new patent pending Lagging Wear Indicator feature lets you know when pulley lagging is at the end of its wear life.

The Lagging Wear Indicator consists of a 3 inch wide strip of green rubber embedded in the bottom layer of lagging. When this green wear indicator strip becomes visible on the face of the pulley, it alerts maintenance that the lagging is nearing the end of its service life. Standard on 24" diameter and above, optional for smaller.

*This product is only available in the US and Canada.*

**[WWW.PPI-GLOBAL.COM](http://WWW.PPI-GLOBAL.COM) | [SALES@PPI-GLOBAL.COM](mailto:SALES@PPI-GLOBAL.COM)**

Product shown are for illustrative purposes only and may display optional accessories or components. Please contact your sales representative for more information on product specifications. PPI respectively reserves the right to make changes in engineering, design and specifications; add improvements; or discontinue manufacturing at any time without notice obligation. PPI and its respective logos are trademarks of Precision, Inc. in the US and or other countries.

PPI 086-03

Copyright ©2021 Precision Pulley & Idler, all rights reserved.

06/21