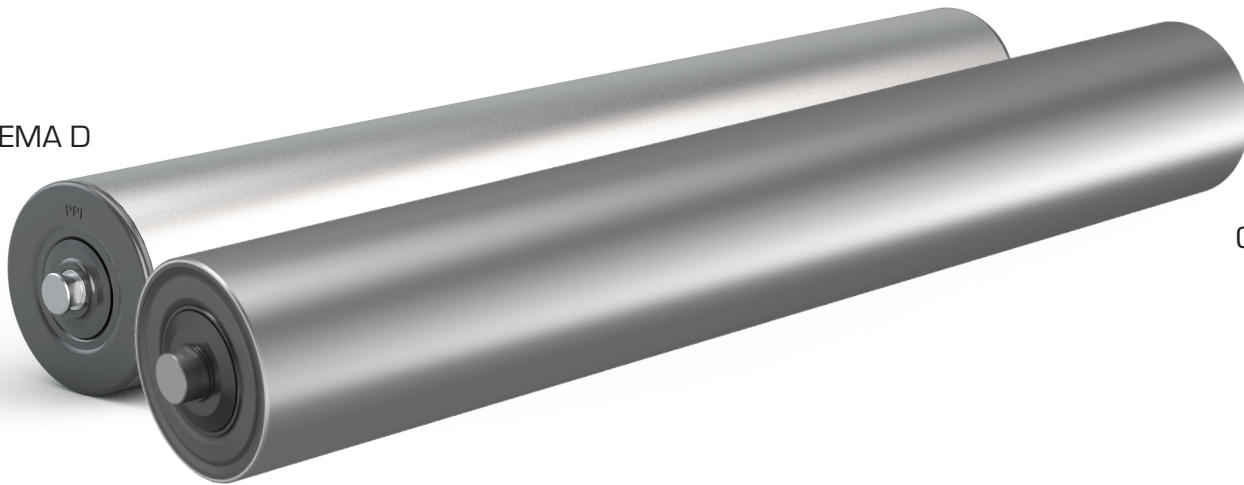


ALUMINUM IDLER ROLLS



CEMA D

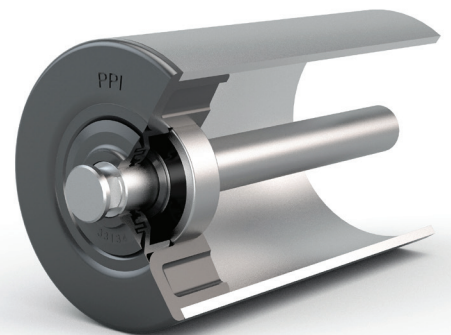


CEMA E

PPI's Aluminum idler roll was engineered with maintenance personnel in mind. It offers a significant weight reduction compared to equivalent steel rolls. Incorporated with a thicker wall tube and PPI's proven seal design, the aluminum idler roll eases maintenance while maintaining CEMA load ratings.

FEATURES AND BENEFITS

- Weight reductions of up to 50% compared to equivalent steel rolls
- 3/16" wall tubing extends roll life
- Available in:
 - CEMA D (6305 bearing)
 - CEMA E (6307 bearing)
 - CEMA E Plus (6308 bearing)
- Meets CEMA load ratings
- Utilizes PPI's standard triple labyrinth and shaft contact seal configuration
- Available as a Retro Roll®
- Available in 5", 6", and 7" diameters
- Part number example:
D6-TE-36AL
E6-FL-72AL



WWW.PPI-GLOBAL.COM | SALES@PPI-GLOBAL.COM

Product shown are for illustrative purposes only and may display optional accessories or components. Please contact your sales representative for more information on product specifications. PPI respectively reserves the right to make changes in engineering, design and specifications; add improvements; or discontinue manufacturing at any time without notice obligation. PPI and its respective logos are trademarks of Precision, Inc. in the US and or other countries.
PPI 083-03 Copyright ©2021 Precision Pulley & Idler, all rights reserved.