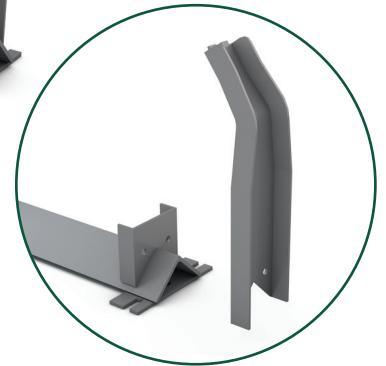
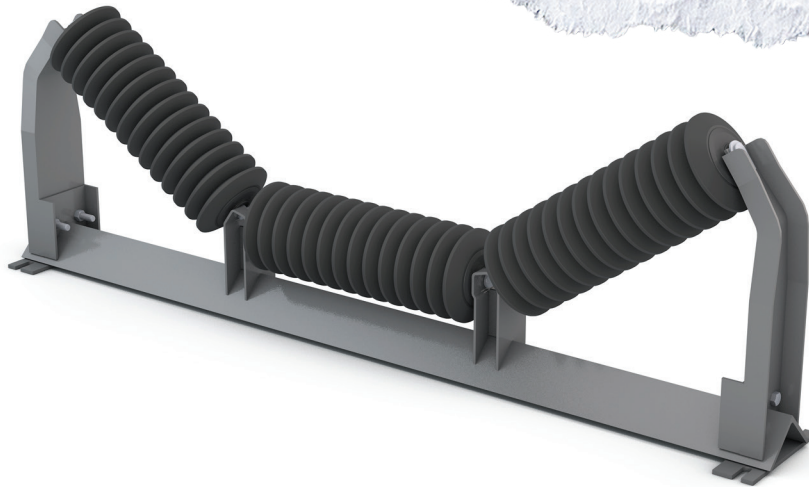


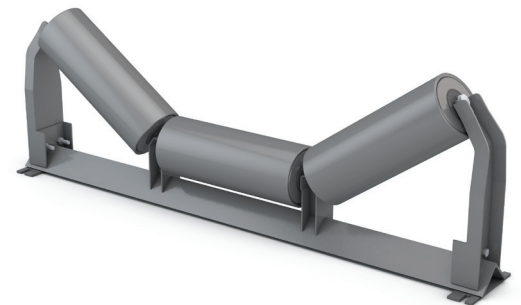
TROUGHING IDLER REMOVABLE END BRACKET



Roll maintenance and replacement can be a very challenging task with traditional troughing idler frames. Incorporating PPI's removable end bracket frames to high wear areas—like loading zones—can ease the job by allowing the user better access to idler rolls in a congested area.

FEATURES AND BENEFITS

- Allows for easy roll change-out which minimizes downtime
- Excellent choice for impact zones where frequent roll maintenance occurs
- Minimizes distance the belt must be lifted off the rolls for roll change-out
- Available in 20°, 35° and 45° trough angles
- Available in CEMA C, D, E, and F



WWW.PPI-GLOBAL.COM | SALES@PPI-GLOBAL.COM

Product shown are for illustrative purposes only and may display optional accessories or components. Please contact your sales representative for more information on product specifications. PPI respectively reserves the right to make changes in engineering, design and specifications; add improvements; or discontinue manufacturing at any time without notice obligation. PPI and its respective logos are trademarks of Precision, Inc. in the US and or other countries. Copyright ©2017 Precision Pulley & Idler, all rights reserved.