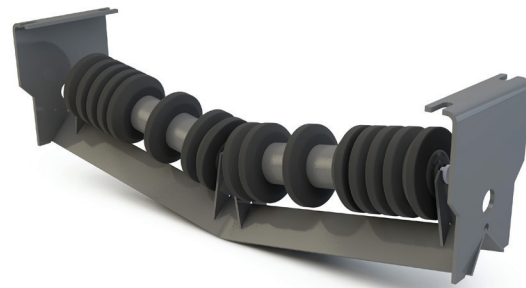


PPI's V-Return Idlers are available with 4.5" and 7" drop heights and are built with a 10° two roll trough configuration that allows gravity to naturally keep the belt centered. The shorter two roll design enables the user to implement much lighter rolls than the traditional single roll configurations.

### FEATURES AND BENEFITS

- CEMA C, D, and E in 4.5" and 7" drop heights
- CEMA F in 7" drop heights
- 10° trough angle allows gravity to naturally track the belt
- Available in CEMA C, D, E, and F series
- Available with rubber disc rolls
- Two rolls to aid in replacement by reducing weight



[www.ppi-global.com](http://www.ppi-global.com) | [sales@ppi-global.com](mailto:sales@ppi-global.com)

Product shown are for illustrative purposes only and may display optional accessories or components. Please contact your sales representative for more information on product specifications. PPI respectively reserves the right to make changes in engineering, design and specifications; add improvements; or discontinue manufacturing at any time without notice obligation. PPI and its respective logos are trademarks of Precision, Inc. in the US and or other countries.