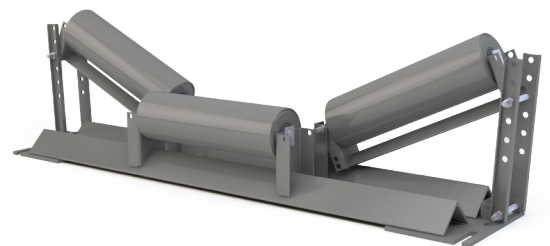


Inline Transition Equal Troughing Idler

Providing a smooth transition from a flat belt to a troughed belt or vice versa is critical in promoting long life of the components in the transition area and most importantly, extending the life of the belt. PPI's adjustable Transition Troughing Idlers provide precise adjustment in  $2.5^\circ$  increments allowing the user to fine tune the trough angle in the transition area.

## FEATURES AND BENEFITS

- Reduce belt stress
- Extends the life of transition area components
- Adjustable in  $2\frac{1}{2}^\circ$  increments
- Available in CEMA C, D, E and F
- Available in offset and inline troughing idler
- End brackets are removeable easing the installation process

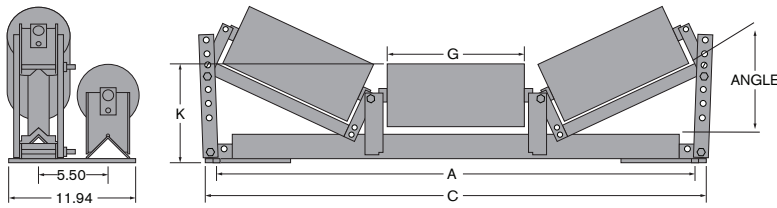


Offset Transition Equal Troughing Idler

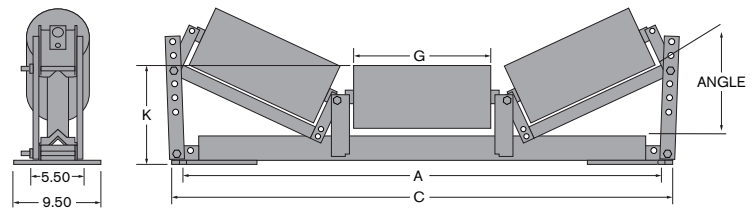
# TRANSITION EQUAL TROUGHING IDLER



OFFSET TRANSITION EQUAL TROUGHING IDLER



INLINE TRANSITION EQUAL TROUGHING IDLER



5° - 35° CEMA C OFFSET TRANSITION EQUAL TROUGHING IDLER

BELT WIDTH	4" ROLL DIAMETER			5" ROLL DIAMETER			6" ROLL DIAMETER			STANDARD DIMENSIONS		
	PART NUMBER	K	WT	PART NUMBER	K	WT	PART NUMBER	K	WT	A	C	G
18	C4-35TET-18SB	8.22	73	C5-35TET-18SB	8.72	77	C6-35TET-18SB	9.22	84	27	29	6.75
20	C4-35TET-20SB	8.22	77	C5-35TET-20SB	8.72	80	C6-35TET-20SB	9.22	88	29	31	7.63
24	C4-35TET-24SB	8.22	83	C5-35TET-24SB	8.72	87	C6-35TET-24SB	9.22	95	33	35	8.94
30	C4-35TET-30SB	8.22	92	C5-35TET-30SB	8.72	97	C6-35TET-30SB	9.22	107	39	41	11.13
36	C4-35TET-36SB	8.22	101	C5-35TET-36SB	8.72	107	C6-35TET-36SB	9.22	118	45	47	13.25
42	C4-35TET-42SB	8.60	126	C5-35TET-42SB	9.10	133	C6-35TET-42SB	9.60	146	51	53	15.44
48	C4-35TET-48SB	8.60	137	C5-35TET-48SB	9.10	145	C6-35TET-48SB	9.60	160	57	59	17.63
54	C4-35TET-54SB	8.60	148	C5-35TET-54SB	9.10	157	C6-35TET-54SB	9.60	172	63	65	19.75
60	C4-35TET-60SB	8.60	159	C5-35TET-60SB	9.10	168	C6-35TET-60SB	9.60	185	69	71	21.75

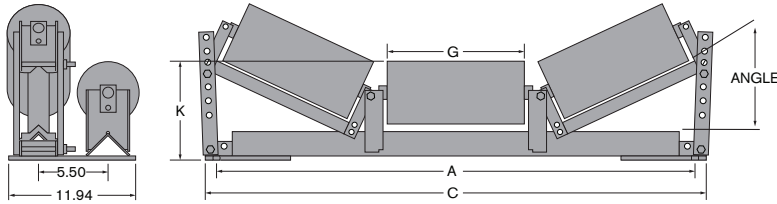
5° - 35° CEMA C INLINE TRANSITION EQUAL TROUGHING IDLER

BELT WIDTH	4" ROLL DIAMETER			5" ROLL DIAMETER			6" ROLL DIAMETER			STANDARD DIMENSIONS		
	PART NUMBER	K	WT	PART NUMBER	K	WT	PART NUMBER	K	WT	A	C	G
18	C4-TET-18	8.22	57	C5-TET-18	8.72	60	C6-TET-18	9.22	67	27	29	6.75
20	C4-TET-20	8.22	59	C5-TET-20	8.72	63	C6-TET-20	9.22	71	29	31	7.63
24	C4-TET-24	8.22	64	C5-TET-24	8.72	68	C6-TET-24	9.22	77	33	35	8.94
30	C4-TET-30	8.22	71	C5-TET-30	8.72	76	C6-TET-30	9.22	86	39	41	11.13
36	C4-TET-36	8.22	78	C5-TET-36	8.72	84	C6-TET-36	9.22	95	45	47	13.25
42	C4-TET-42	8.60	94	C5-TET-42	9.10	101	C6-TET-42	9.60	113	51	53	15.44
48	C4-TET-48	8.60	102	C5-TET-48	9.10	110	C6-TET-48	9.60	124	57	59	17.63
54	C4-TET-54	8.60	110	C5-TET-54	9.10	119	C6-TET-54	9.60	134	63	65	19.75
60	C4-TET-60	8.60	118	C5-TET-60	9.10	127	C6-TET-60	9.60	144	69	71	21.75

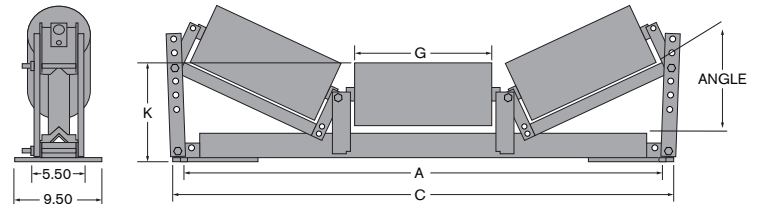
# TRANSITION EQUAL TROUGHING IDLER



OFFSET TRANSITION EQUAL TROUGHING IDLER



INLINE TRANSITION EQUAL TROUGHING IDLER



5° - 35° CEMA D OFFSET TRANSITION EQUAL TROUGHING IDLER									
BELT WIDTH	5" ROLL DIAMETER			6" ROLL DIAMETER			STANDARD DIMENSIONS		
	PART NUMBER	K	WT	PART NUMBER	K	WT	A	C	G
18	D5-35TET-18SB	8.72	83	D6-35TET-18SB	9.22	90	27	29	6.75
20	D5-35TET-20SB	8.72	87	D6-35TET-20SB	9.22	94	29	31	7.63
24	D5-35TET-24SB	8.72	84	D6-35TET-24SB	9.22	102	33	35	8.94
30	D5-35TET-30SB	8.72	104	D6-35TET-30SB	9.22	114	39	41	11.13
36	D5-35TET-36SB	8.72	115	D6-35TET-36SB	9.22	126	45	47	13.25
42	D5-35TET-42SB	9.10	142	D6-35TET-42SB	9.60	155	51	53	15.44
48	D5-35TET-48SB	9.10	155	D6-35TET-48SB	9.60	169	57	59	17.63
54	D5-35TET-54SB	9.45	176	D6-35TET-54SB	9.95	191	63	65	19.75
60	D5-35TET-60SB	9.45	189	D6-35TET-60SB	9.95	205	69	71	21.75
72	D5-35TET-72SB	9.45	215	D6-35TET-72SB	9.95	235	81	83	26.00

5° - 35° CEMA D INLINE TRANSITION EQUAL TROUGHING IDLER									
BELT WIDTH	5" ROLL DIAMETER			6" ROLL DIAMETER			STANDARD DIMENSIONS		
	PART NUMBER	K	WT	PART NUMBER	K	WT	A	C	G
18	D5-TET-18	8.72	66	D6-TET-18	9.22	73	27	29	6.75
20	D5-TET-20	8.72	70	D6-TET-20	9.22	77	29	31	7.63
24	D5-TET-24	8.72	75	D6-TET-24	9.22	83	33	35	8.94
30	D5-TET-30	8.72	84	D6-TET-30	9.22	94	39	41	11.13
36	D5-TET-36	8.72	93	D6-TET-36	9.22	104	45	47	13.25
42	D5-TET-42	9.10	110	D6-TET-42	9.60	122	51	53	15.44
48	D5-TET-48	9.10	120	D6-TET-48	9.60	133	57	59	17.63
54	D5-TET-54	9.45	133	D6-TET-54	9.95	149	63	65	19.75
60	D5-TET-60	9.45	143	D6-TET-60	9.95	160	69	71	21.75
66	D5-TET-66	9.45	153	D6-TET-66	9.95	171	75	77	23.88
72	D5-TET-72	9.45	163	D6-TET-72	9.95	182	81	83	26.00

[WWW.PPI-GLOBAL.COM](http://WWW.PPI-GLOBAL.COM) | [SALES@PPI-GLOBAL.COM](mailto:SALES@PPI-GLOBAL.COM)

Product shown are for illustrative purposes only and may display optional accessories or components. Please contact your sales representative for more information on product specifications. PPI respectively reserves the right to make changes in engineering, design and specifications; add improvements; or discontinue manufacturing at any time without notice obligation. PPI and its respective logos are trademarks of Precision, Inc. in the US and or other countries. PPI 059-07 Copyright ©2021 Precision Pulley & Idler, all rights reserved.