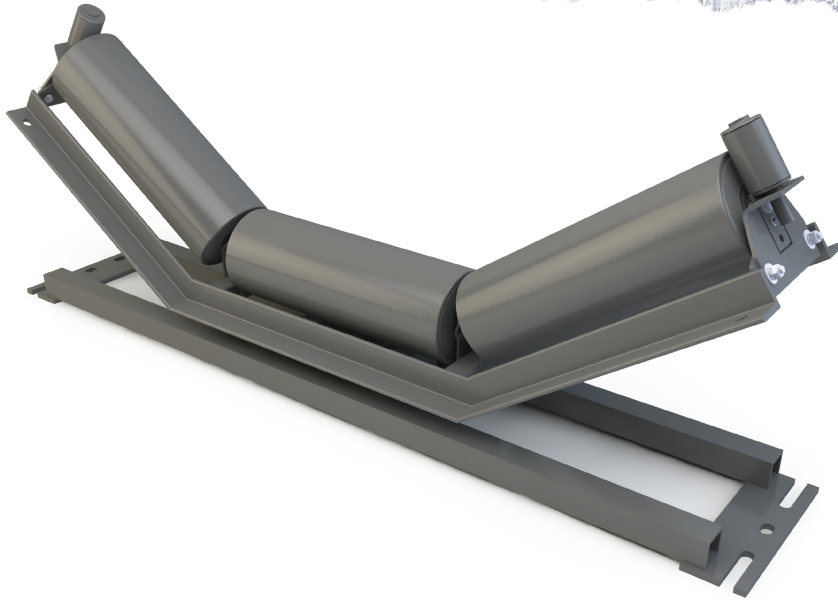


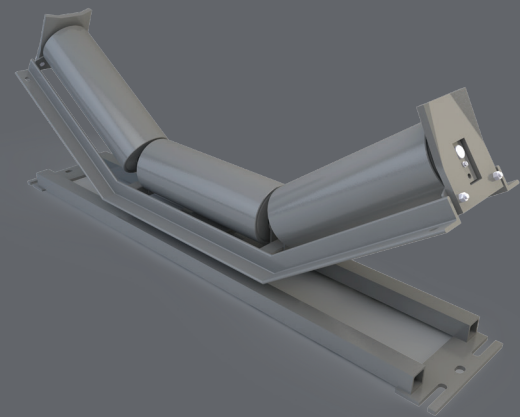
# REVERSIBLE SELF-ALIGNER



Traditional guide arm self-aligners will not function properly in reversing belt applications due to the guide arms being belt direction sensitive. PPI's Reversible Self-Aligner is equipped with either a slider plate style or a guide roller version, both configurations operate under the same principle, as the belt wanders off of centerline it engages the actuators causing the trainer to steer the belt back to center.

## FEATURES AND BENEFITS

- Two configurations are available for CEMA B, C, and D frames for trougher, flat and return self-aligners
- Available with 1 1/2" drop with slider plate only
- Individual parts are available for retrofitting PPI self-aligner frames
- Roll and bracket assembly available as an add on
- Slider plate assembly available as an add on



[WWW.PPI-GLOBAL.COM](http://WWW.PPI-GLOBAL.COM) | [SALES@PPI-GLOBAL.COM](mailto:SALES@PPI-GLOBAL.COM)

Product shown are for illustrative purposes only and may display optional accessories or components. Please contact your sales representative for more information on product specifications. PPI respectively reserves the right to make changes in engineering, design and specifications; add improvements; or discontinue manufacturing at any time without notice obligation. PPI and its respective logos are trademarks of Precision, Inc. in the US and or other countries.