

PPI Retro Rolls® allow you to use the proven PPI idler rolls in other manufacturers frames. You get the durability and low maintenance that PPI is known for without having to replace existing frames.

## FEATURES AND BENEFITS

- Maintenance free, sealed for life, heavy duty ball bearings
- Seal for a long, trouble-free life in the toughest applications
- Low Total Indicator Run-out (TIR) for good balance and lower horsepower usage
- Adjustable adapter nuts or slotted shaft ends provided depending on application
- Available for all major idler brands, ISO, plus others.
- Available with 1/4" wall tubing, lagging, or Poly Sleeve
- Available in all standard CEMA classes.
- Engineered shaft and bearing combinations also available



[www.ppi-global.com](http://www.ppi-global.com) | [sales@ppi-global.com](mailto:sales@ppi-global.com)

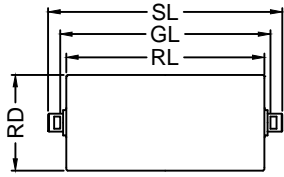
Product shown are for illustrative purposes only and may display optional accessories or components. Please contact your sales representative for more information on product specifications. PPI respectively reserves the right to make changes in engineering, design and specifications; add improvements; or discontinue manufacturing at any time without notice obligation. PPI, Retro Rolls and their respective logos are trademarks of Precision, Inc. in the US and or other countries.



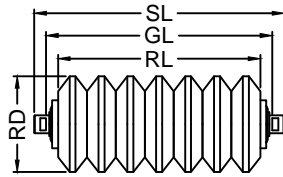
# RETRO ROLL DATA SHEET

Company: \_\_\_\_\_  
 Location: \_\_\_\_\_  
 Contact: \_\_\_\_\_  
 Phone #: \_\_\_\_\_  
 Email: \_\_\_\_\_

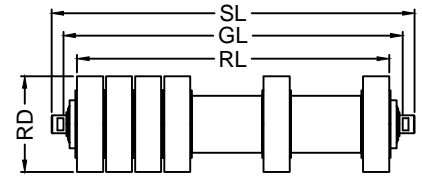
## CHOOSE ROLL TYPE



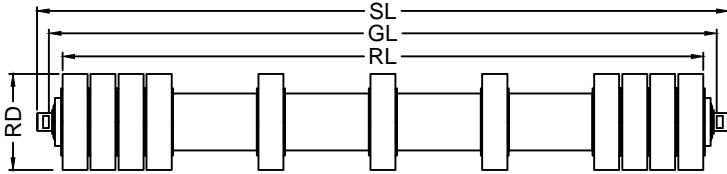
- Steel Roll
- Stainless Roll
- Aluminum Roll
- Plastic Roll



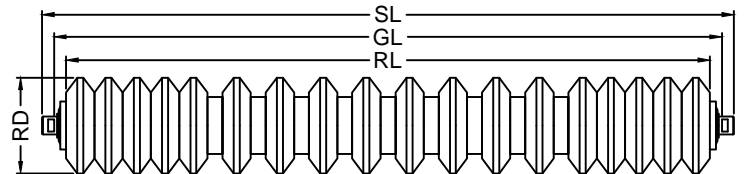
Impact Roll



Rubber Disc V-Return



Rubber Disc Flat Return



Rubber Disc Carrying

## PROVIDE ROLL DETAIL

Requested Quantity \_\_\_\_\_  
 Roll Diameter - RD \_\_\_\_\_  
 Roll Length - RL \_\_\_\_\_  
 Bearing Size Optional \_\_\_\_\_

Shaft Length - SL \_\_\_\_\_  
 Gage Length - GL \_\_\_\_\_  
 Shaft Diameter at Center Optional \_\_\_\_\_

## CHOOSE SHAFT END TYPE AND PROVIDE SHAFT END DETAIL

|                                 |                               |                                   |
|---------------------------------|-------------------------------|-----------------------------------|
| <br>2 FLAT<br>TYPE B            | <br>2 FLAT<br>TYPE H          | <br>ROUND ADAPTER<br>TYPE B - NUT |
| <br>HEX/ROUND ADAPTER<br>TYPE D | <br>HEX/HEX ADAPTER<br>TYPE E | <br>PLAIN HEX ADAPTER<br>TYPE F   |
| <br>THREADS<br>TYPE C           | <br>PLAIN<br>TYPE G           | <br>DRILL&TAP<br>TYPE K           |
| <br>HOLE<br>TYPE J              | <br>HOLE / FLATS<br>TYPE HJ   | <br>DRILL&TAP / FLATS<br>TYPE HK  |