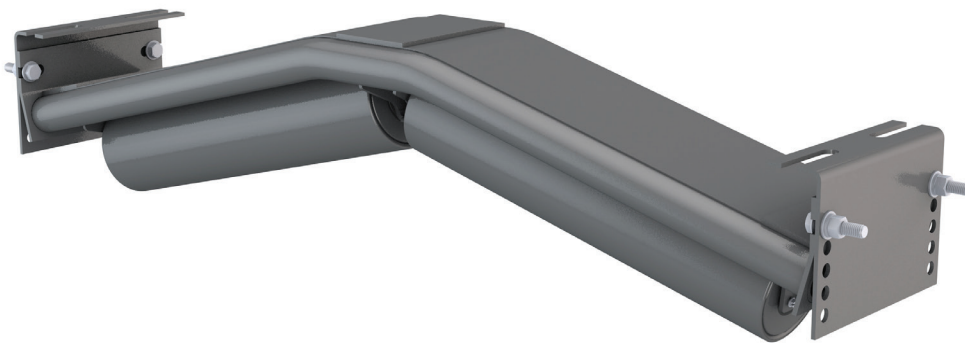


# INVERTED V-RETURN TRAINER



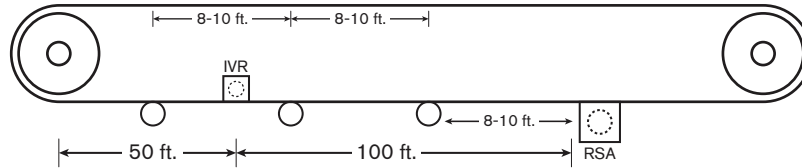
Inverted V-Return (IVR) Idlers are used to positively track the belt on the return side of the conveyor. The PPI IVR is adjustable to increase the displacement and the resulting tracking force on the belt.

## FEATURES AND BENEFITS

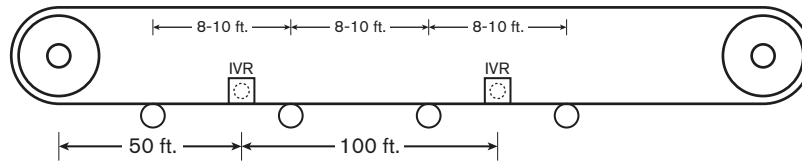
- Positive tracking on the clean side of the belt
- Sealed for life ball bearings
- Adjustable and can be lowered to create more of a channeling effect on the belt
- No swivels
- Works on reversing belts
- Available in CEMA C, D, and E

## CONVEYOR LAYOUT SCENARIOS

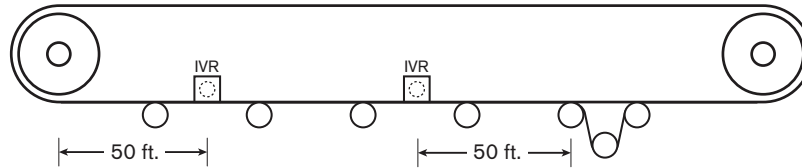
### IVR WITH OTHER BELT TRAINERS



### IVR TRAINING ONLY



### IVR IN GRAVITY TAKE-UP SYSTEM



Typically, two IVRs are used on each conveyor. One near the head and one near the tail. If the conveyor is long, the user may want to add additional IVR(s). The IVR is placed between two existing conventional return rolls as illustrated.

Maintain at least 4-5 feet between the IVR and other return idlers. This will allow the belt to flex without damage, while creating a center channel to keep the belt on track.

The IVR is adjustable and can be lowered to create more of a channeling effect on the belt.

## PART NUMBER BREAKDOWN

