

# RIGHT ANGLE SHAFT MOUNTED DRIVE ASSEMBLY DATA SHEET (1 MOTOR)

FORM: OHL\_RGHTANG1  
PAGE 1  
REV. 4, EC018-913  
12/26/18

**NOTES:**

- 1) DATA NOT NEEDED IF USING FLEXIBLE LOW SPEED COUPLINGS.
- 2) RIGID COUPLING MAY NOT BE PRESENT.
- 3) IF MORE THEN 1 DRIVE PULLEY EXISTS ON THE CONVEYOR, PROVIDE SEPARATE SHEET FOR EACH PULLEY.
- 4) IS THIS A TRIPPER CONVEYOR? ( Y / N )
- 5) FILL OUT EITHER TYPE A OR TYPE B SECTION DEPENDING ON ORIENTATION

T1: \_\_\_\_\_

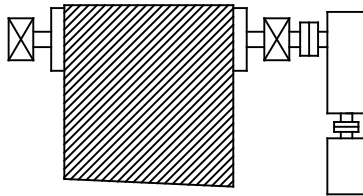
T2: \_\_\_\_\_

MOTOR HP: \_\_\_\_\_

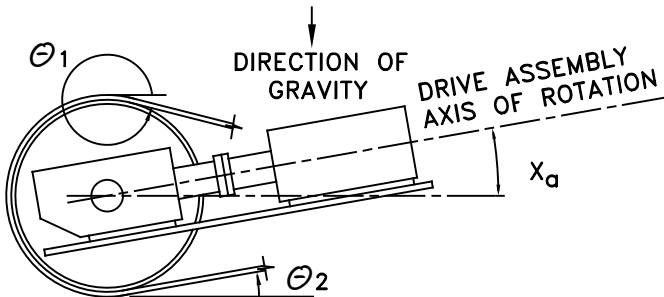
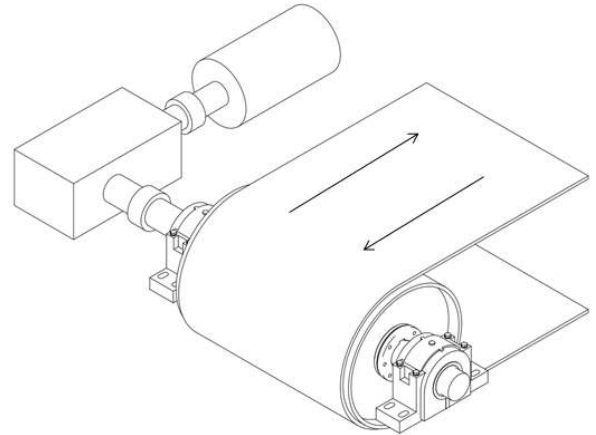
BELT SPEED: \_\_\_\_\_

## TYPE A:

Ⓐ



### CIRCLE BELT DIRECTION



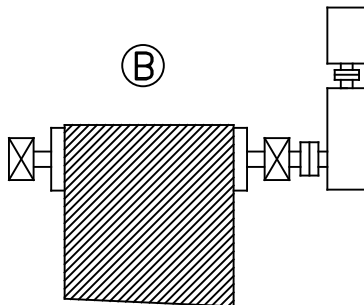
BELT ANGLE COMING OFF PULLEY IN ( $\theta_1$ ): \_\_\_\_\_

BELT ANGLE COMING OFF PULLEY IN ( $\theta_2$ ): \_\_\_\_\_

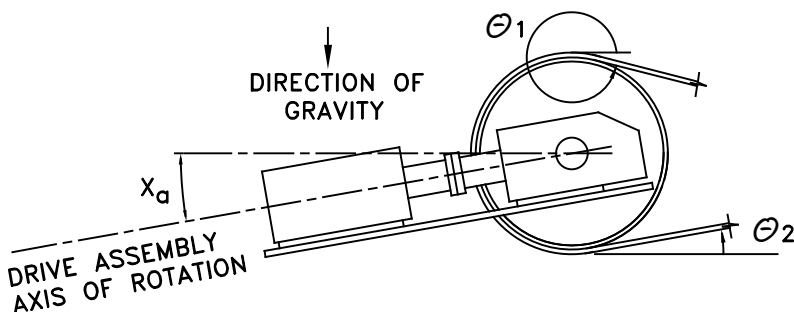
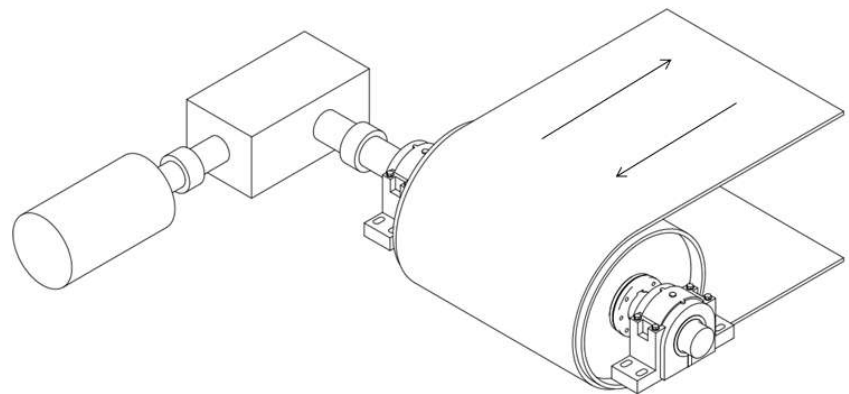
DRIVE ASSEMBLY ANGLE ( $X_a$ ): \_\_\_\_\_

## TYPE B:

Ⓑ



### CIRCLE BELT DIRECTION



BELT ANGLE COMING OFF PULLEY IN ( $\theta_1$ ): \_\_\_\_\_

BELT ANGLE COMING OFF PULLEY IN ( $\theta_2$ ): \_\_\_\_\_

DRIVE ASSEMBLY ANGLE ( $X_a$ ): \_\_\_\_\_



RIGHT ANGLE SHAFT MOUNTED DRIVE  
ASSEMBLY DATA SHEET (1 MOTOR)

FORM: OHL\_RGHTANG1  
PAGE 2  
REV. 4, EC018-913  
12/26/18

DRIVE ASSEMBLY DATA

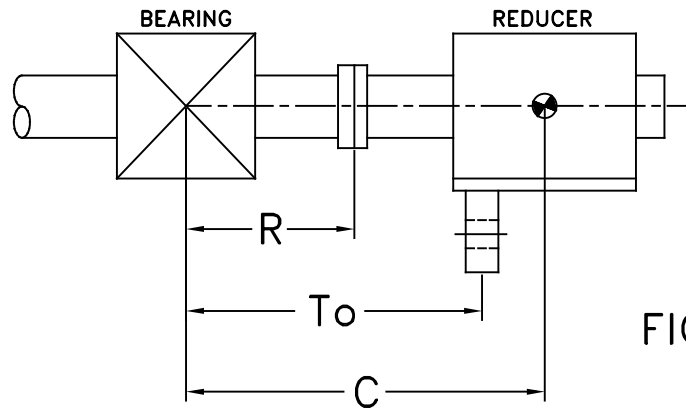


FIG. 1

**FIG. 1**

REDUCER/BEARING CENTER DISTANCE (C): .....  
 TORQUE ARM/BEARING CENTER DISTANCE (To):.....  
 RIGID COUPLING/BEARING CENTER DISTANCE (R):..  
 RIGID COUPLING WEIGHT:.....

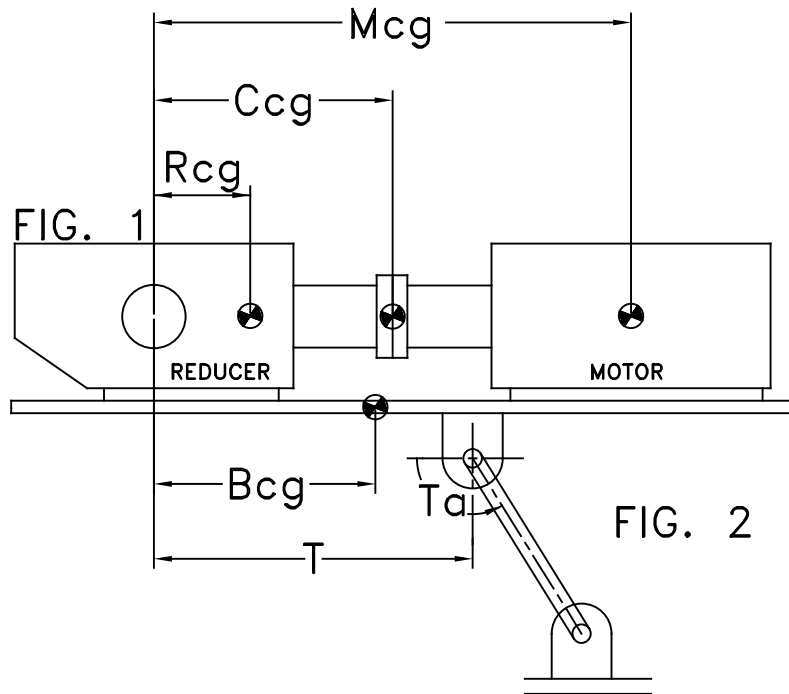


FIG. 2

**FIG. 2**

TORQUE ARM DISTANCE (T):.....  
 TORQUE ARM ANGLE (Ta):.....  
 REDUCER CENTER OF GRAVITY (Rcg):.....  
 REDUCER WEIGHT INCLUDING OIL:.....  
 HIGH SPEED COUPLING CENTER OF GRAVITY (Ccg):.....  
 HIGH SPEED COUPLING WEIGHT:.....  
 MOTOR CENTER OF GRAVITY (Mcg):.....  
 MOTOR WEIGHT:.....  
 BASE CENTER OF GRAVITY (Bcg):.....  
 BASE WEIGHT:.....



\* PPI WILL NOT BE RESPONSIBLE FOR ISSUES RELATED TO OVERHUNG LOADS.