

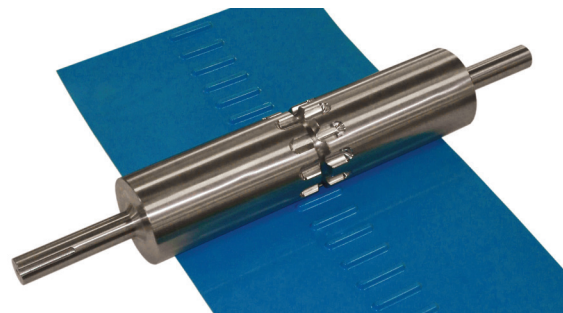
Composite and Stainless Steel option

PPI has designed and engineered a pulley product that will eliminate slipping, belt tracking and sanitation concerns. The patented KV Drive Pulley has a positive, quiet and self-tracking feature with 304 stainless steel construction and 3-A dairy approval. The composite and stainless steel option has FDA approval and is extremely sanitary.

Originally designed to drive the Volta SuperDrive™ belt, it can be used to run on other belts such as the flat belt and standard “A” section V-Guide belt designs. The KV Drive Pulley, when used with the Volta SuperDrive belt, will outlast and outperform modular belts with plastic sprockets.

FEATURES AND BENEFITS

- Positive drive system
- Self-tracking belt
- Sanitary design
- Low-maintenance
- Quiet operation
- Various design options
- Available in multiple material options



Stainless Steel option



www.ppi-global.com | sales@ppi-global.com

Product shown are for illustrative purposes only and may display optional accessories or components. Please contact your sales representative for more information on product specifications. PPI respectively reserves the right to make changes in engineering, design and specifications; add improvements; or discontinue manufacturing at any time without notice obligation. Volta SuperDrive is a trademark of Volta Belting Technology, Ltda. PPI and its respective logos are trademarks of Precision, Inc. in the US and/or other countries.