

PPI's K-Drive is an engineered, one-piece pulley that drives today's newest technologies of positive drive, low to no tension conveyor belting for the food industry. This patented design combines plastic and stainless steel to create one of the most sanitary designs for positive drive conveyor belting in the market.

The K-Drive can be built to accommodate different styles of positive drive conveyor belting.

As a drop in replacement of square shaft and sprockets assemblies, it will make your conveyor even more hygienic.

FEATURES AND BENEFITS

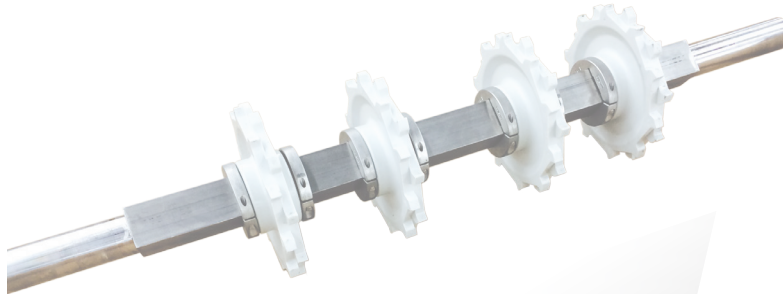
- Positive drive system
- Self-tracking belt
- Sanitary design
- Low-maintenance
- Quiet operation
- Various design options

SOLID SURFACE BELT TYPES

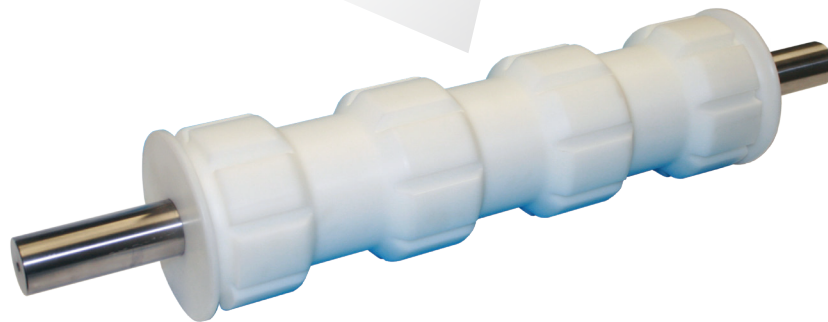
- Intralox ThermoDrive 8050 & 8026
- Volta Superdrive, Dual Drive, Dual Drive SP
- Habasit Cleandrive
- Gates Mectrol PosiClean®
- CHIORINO HP® Compact Drive
- All timing belts
- Many others

K-DRIVE REPLACES THE SHAFT AND SPROCKET DRIVE FOR A MORE SANITARY, EASY-TO-CLEAN OPTION.

Existing assembly drives consists of notched, square shafts with locking collars holding sprockets in place. These assemblies are difficult to clean and lends themselves to migrating sprockets which decreases drive efficiency. PPI's revolutionary one-piece, K-Drive technology eliminates those components for ease of cleaning and provides superior wear and less belt stress.



TRADITIONAL DESIGN



K-DRIVE REVOLUTIONARY DESIGN

- eliminates the need for shaft collars and snap rings
- can be made with or without flanges for tracking
- eliminates chances of sprockets breaking infield
- greater sanitation due to few parts and press-fit shaft design
- superior pulley and belt wear due to use of acetal



USA | CANADA | CHILE

www.ppi-global.com | sales@ppi-global.com

Product shown are for illustrative purposes only and may display optional accessories or components. Please contact your sales representative for more information on product specifications. PPI respectively reserves the right to make changes in engineering, design and specifications; add improvements; or discontinue manufacturing at any time without notice obligation. Gates Mecrol PosiClean is a trademark of Gates Corporation. CHIORINO HP Compact Drive is a trademark of Chiorino S.p.A. PPI and its respective logos are trademarks of Precision, Inc. in the US and or other countries.