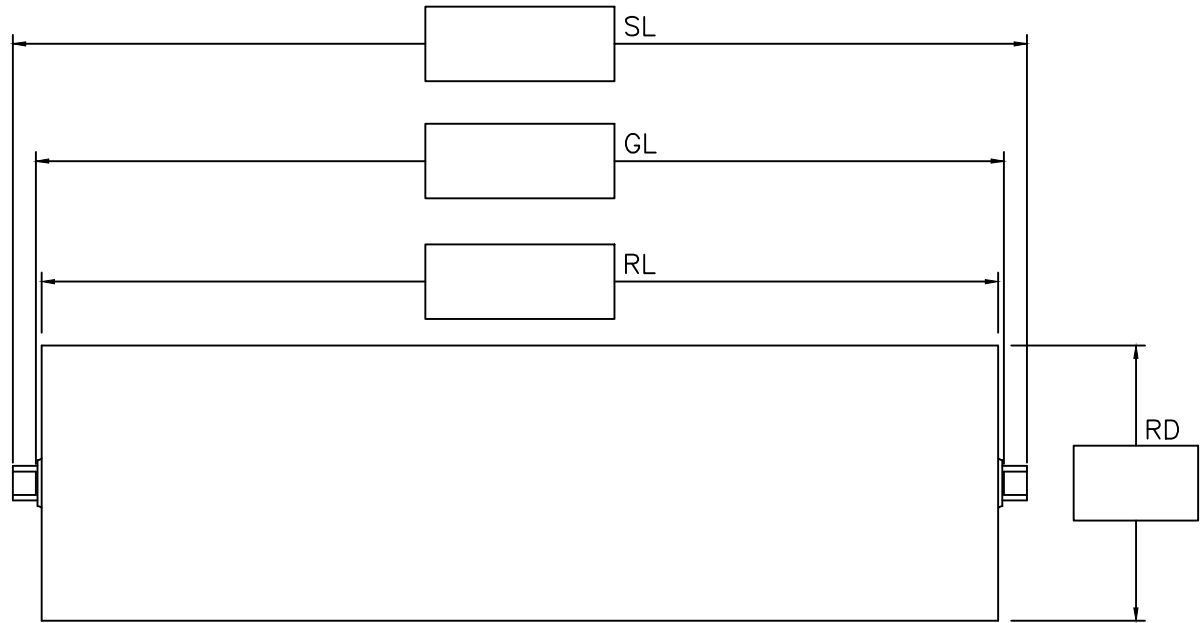
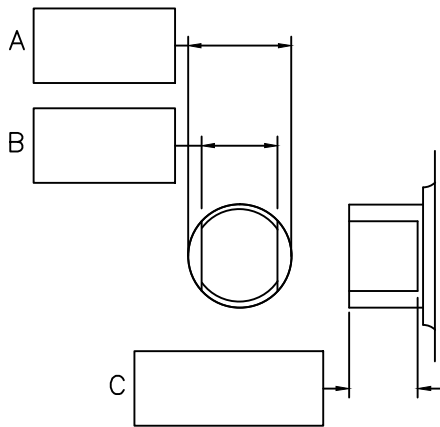


# RETRO ROLL DATA SHEET



CUSTOMER \_\_\_\_\_  
 LOCATION \_\_\_\_\_  
 CONTACT \_\_\_\_\_  
 PHONE \_\_\_\_\_  
 NOTES \_\_\_\_\_  
 \_\_\_\_\_  
 \_\_\_\_\_

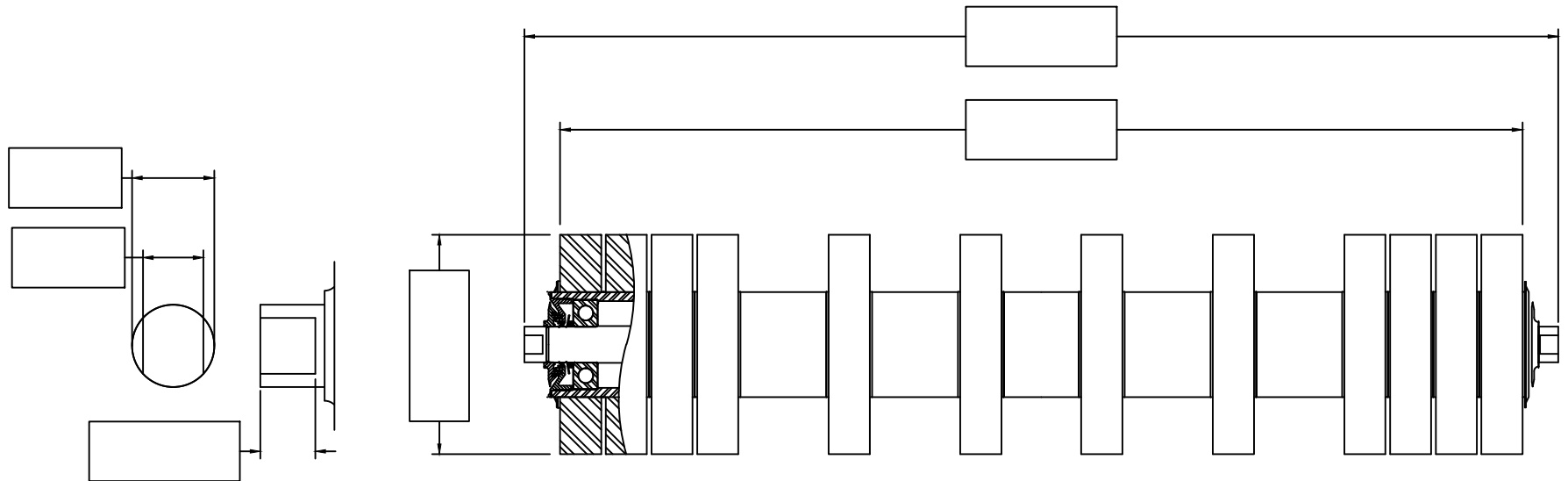


<b>Tolerances</b> <small>Unless Otherwise Specified</small> Decimal .XX± .XXX± .XXXX± ANGULAR ±1°	CEMA SERIES	DIAM.	ANGLE	TYPE	BELT WIDTH	BEARING	WEIGHT	ITEM CLASS	SCALE	<b>Precision Pulley &amp; Idler</b> P.O. Box 287 • Pella, IA 50219 • 641-628-3115
	N/A	N/A	N/A	N/A	N/A	N/A	N/A	N/A	UNK	
	ASSEMBLY PART NUMBER		ITEM DESCRIPTION			Rev:	Date:	BY: EJA	DWG. NO.: BLANK FORM H	
ANGULAR ±1°	N/A	RETRO DATA SHEET: STYLE H					DATE: 3/27/08	PART NO.: N/A		

# RETRO ROLL DATA SHEET



CUSTOMER \_\_\_\_\_  
 LOCATION \_\_\_\_\_  
 CONTACT \_\_\_\_\_  
 PHONE \_\_\_\_\_  
 NOTES \_\_\_\_\_  
 \_\_\_\_\_  
 \_\_\_\_\_

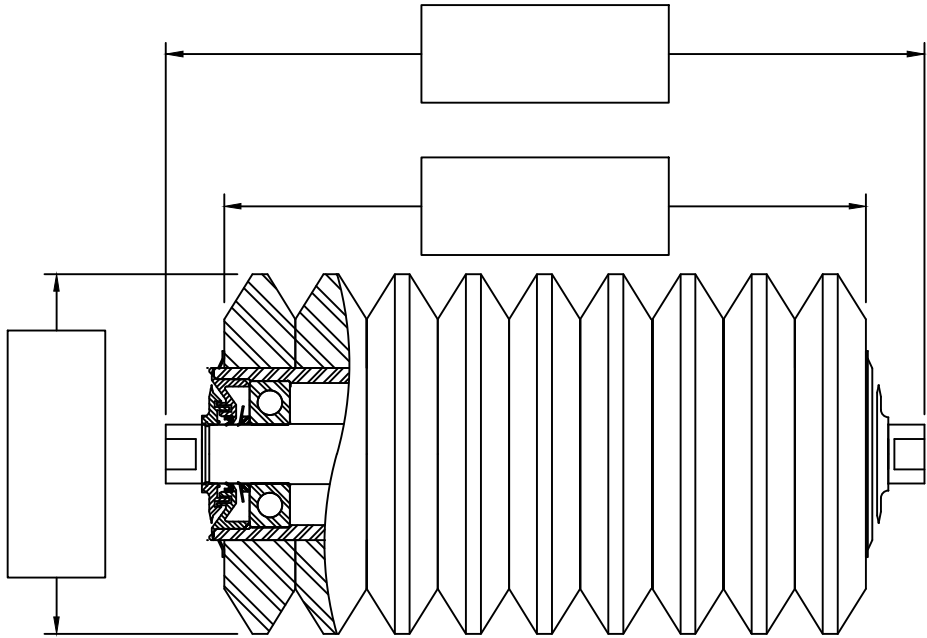
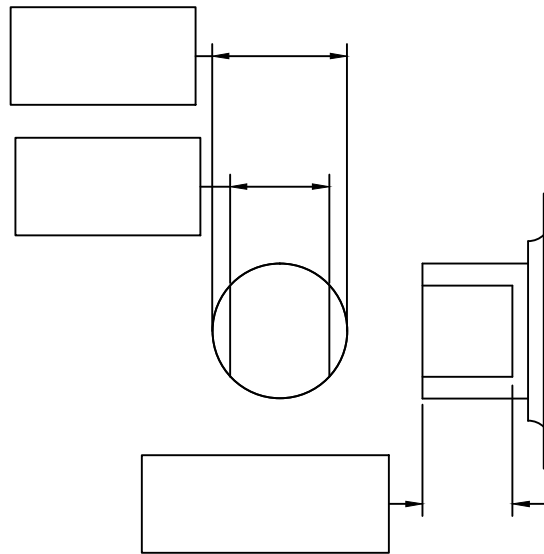


Tolerances <small>Unless Otherwise Specified</small> Decimal .XX± .XXX± .XXXX± ANGULAR ±1°	CEMA SERIES	DIAM.	ANGLE	TYPE	BELT WIDTH	BEARING	WEIGHT	ITEM CLASS	SCALE	P.O. Box 287 • Pella, IA 50219 • 641-628-3115	
	N/A	N/A	N/A	N/A	N/A	N/A	N/A	N/A	UNK		
ASSEMBLY PART NUMBER				ITEM DESCRIPTION				Rev:	Date:	BY: EJA	DWG. NO.: BLANK FORM H-RI
N/A				RETRO DATA SHEET: STYLE H RETURN RUBBER DISC						DATE: 2/16/10	PART NO.: N/A

# RETRO ROLL DATA SHEET



CUSTOMER \_\_\_\_\_  
 LOCATION \_\_\_\_\_  
 CONTACT \_\_\_\_\_  
 PHONE \_\_\_\_\_  
 NOTES \_\_\_\_\_  
 \_\_\_\_\_  
 \_\_\_\_\_

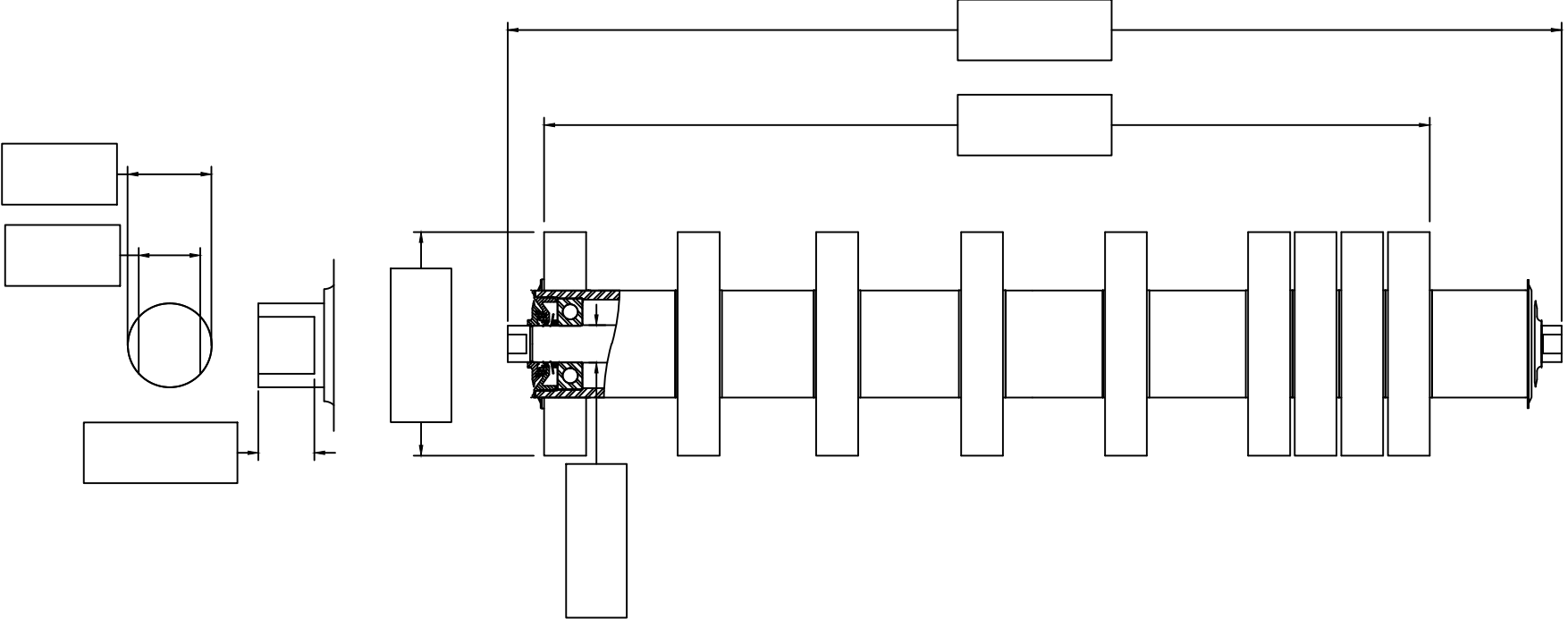


Tolerances <small>Unless Otherwise Specified</small> Decimal .XX± .XXX± .XXXX± ANGULAR ±1°	CEMA SERIES	DIAM.	ANGLE	TYPE	BELT WIDTH	BEARING	WEIGHT	ITEM CLASS	SCALE	Precision Pulley & Idler P.O. Box 287 • Pella, IA 50219 • 641-628-3115		
	N/A	N/A	N/A	N/A	N/A	N/A	N/A	N/A	UNK			
ASSEMBLY PART NUMBER				ITEM DESCRIPTION					Rev:	Date:	BY: EJA	DWG. NO.: BLANK FORM H-TEI
N/A				RETRO DATA SHEET: STYLE H TROUGHING IMPACT							DATE: 2/16/10	PART NO.: N/A

# RETRO ROLL DATA SHEET



CUSTOMER \_\_\_\_\_  
 LOCATION \_\_\_\_\_  
 CONTACT \_\_\_\_\_  
 PHONE \_\_\_\_\_  
 NOTES \_\_\_\_\_  
 \_\_\_\_\_  
 \_\_\_\_\_



Tolerances <small>Unless Otherwise Specified</small> Decimal .XX± .XXX± .XXXX± ANGULAR ±1°	CEMA SERIES	DIAM.	ANGLE	TYPE	BELT WIDTH	BEARING	WEIGHT	ITEM CLASS	SCALE	Precision Pulley & Idler P.O. Box 287 • Pella, IA 50219 • 641-628-3115
	N/A	N/A	N/A	N/A	N/A	N/A	N/A	N/A	UNK	
ASSEMBLY PART NUMBER	ITEM DESCRIPTION			Rev:	Date:	BY: EJA	DWG. NO.: BLANK FORM H-VRI			
N/A	RETRO DATA SHEET: STYLE H V-RETURN RUBBER DISC					DATE: 2/16/10	PART NO.: N/A			