

PPI has taken our retro roll expertise into the grain handling industry by retro fitting cast iron stanchion style idlers. Converting to PPI's sealed for life ball bearing eliminates the maintenance requirement on the older cast iron rolls equipped with a flange bearing design. Based on customer needs, PPI offers compatible idler assemblies from the ground up or specific retro rolls that drop into existing framework.

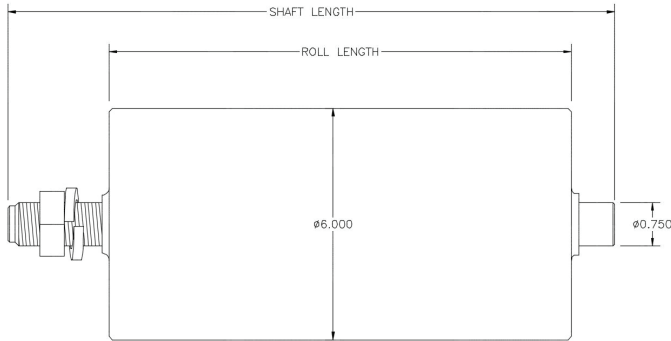


FEATURES AND BENEFITS

- Maintenance free ball bearing design
- Equipped with PPI's proven LXT seal system
- Low roll drag keeps HP requirements at a minimum
- Drop into existing framework
- Adjustable adapter nuts allow fine tune adjustment
- Available in CEMA C and D
- Contact PPI engineering for your unique needs



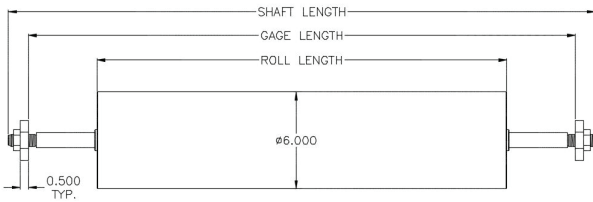
TROUGHER WING RETRO ROLL



PART NUMBER	ROLL DIAMETER	SHAFT DIAMETER	ROLL LENGTH	SHAFT LENGTH
AE738-8.500A*	6.000	0.750	8.500	11.000
AE595-8.750A	6.000	0.750	8.750	11.000
AE257-9.000A	6.000	0.750	9.000	11.000

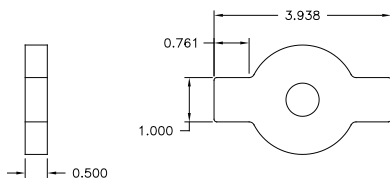
*Standard option

TROUGHER CENTER/RETURN RETRO ROLL WITH WING NUT ADAPTER



PART NUMBER	ROLL DIAMETER	SHAFT DIAMETER	ROLL LENGTH	GAUGE LENGTH	SHAFT LENGTH
43421-12.000	6.000	1.000	12.000	16.000	18.500
40339-29.000	6.000	0.750	29.000	39.563	41.000
43422-33.000	6.000	1.000	33.000	38.625	42.000
TB591-36.000	6.000	1.000	36.000	44.500	47.000
TB408-43.000	6.000	1.000	43.000	50.750	53.250
AE094-51.375	6.000	1.000	51.375	57.000	59.500

WING NUT DETAIL - P/N 40349



Retro Data Forms available here: www.ppi-global.com/resources/productforms/

