

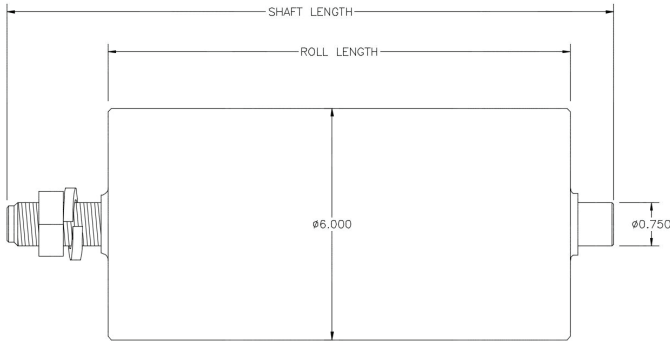
PPI has taken our retro roll expertise into the grain handling industry by retro fitting cast iron stanchion style idlers. Converting to PPI's sealed for life ball bearing eliminates the maintenance requirement on the older cast iron rolls equipped with a flange bearing design. Based on customer needs, PPI offers compatible idler assemblies from the ground up or specific retro rolls that drop into existing framework.

FEATURES AND BENEFITS

- Maintenance free ball bearing design
- Equipped with PPI's proven LXT seal system
- Low roll drag keeps HP requirements at a minimum
- Drop into existing framework
- Adjustable adapter nuts allow fine tune adjustment
- Available in CEMA C and D
- Contact PPI engineering for your unique needs



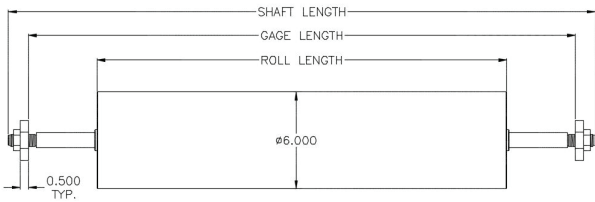
TROUGHER WING RETRO ROLL



| PART NUMBER | ROLL DIAMETER | SHAFT DIAMETER | ROLL LENGTH | SHAFT LENGTH |
|---------------|---------------|----------------|-------------|--------------|
| AE738-8.500A* | 6.000 | 0.750 | 8.500 | 11.000 |
| AE595-8.750A | 6.000 | 0.750 | 8.750 | 11.000 |
| AE257-9.000A | 6.000 | 0.750 | 9.000 | 11.000 |

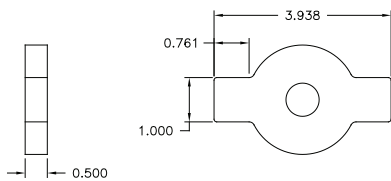
*Standard option

TROUGHER CENTER/RETURN RETRO ROLL WITH WING NUT ADAPTER



| PART NUMBER | ROLL DIAMETER | SHAFT DIAMETER | ROLL LENGTH | GAUGE LENGTH | SHAFT LENGTH |
|--------------|---------------|----------------|-------------|--------------|--------------|
| 43421-12.000 | 6.000 | 1.000 | 12.000 | 16.000 | 18.500 |
| 40339-29.000 | 6.000 | 0.750 | 29.000 | 39.563 | 41.000 |
| 43422-33.000 | 6.000 | 1.000 | 33.000 | 38.625 | 42.000 |
| TB591-36.000 | 6.000 | 1.000 | 36.000 | 44.500 | 47.000 |
| TB408-43.000 | 6.000 | 1.000 | 43.000 | 50.750 | 53.250 |
| AE094-51.375 | 6.000 | 1.000 | 51.375 | 57.000 | 59.500 |

WING NUT DETAIL - P/N 40349



Retro Data Forms available here: www.ppi-global.com/resources/productforms/

