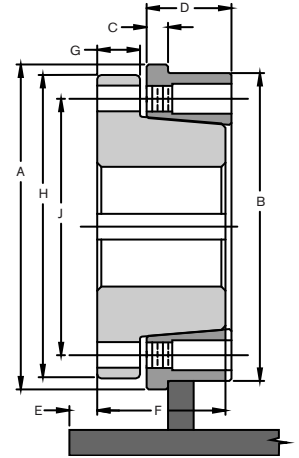
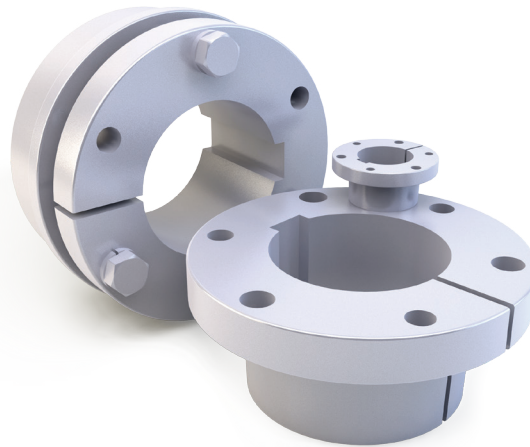


QD[®] HUBS & BUSHINGS

QD[®] has a primary benefit of bushing interchangeability with other shaft mounted components. It's shallow taper provides a high mechanical advantage to assure dependable clamping to the shaft.

FEATURES AND BENEFITS:

- Designed for a wide variety of applications
- 3/4" per foot taper - self seating
- High clamping force eliminates need for key way on non-drives
- Flange deflection stores up cap screw torque for seating while running



HUB	MAX BORE *	HUB DIMENSION				BUSHING							
		Outside Diameter (A)	Minor Outside Diameter (B)	Flange Thickness (C)	Length (D)	Bushing Inset (E)	Length (F)	Flange Thickness (G)	Flange Outside Diameter (H)	Bolt Circle (J)	# Bolts	Bolt diameter	Torque (in lbs)
JA	1.00	2 1/4	2 1/8	1/4	5/8	3/8	1	5/16	2	1 21/32	3	#10	54
SH	1.44	3	2 7/8	1/4	7/8	9/16	1 5/16	7/16	2 5/8	2 1/4	3	1/4	108
SDS	2.00	3 1/2	3 1/4	1/4	3/4	9/16	1 5/16	7/16	3 1/8	2 11/16	3	1/4	108
SK	2.25	4 1/2	4 3/8	3/8	1 1/4	3/8	1 15/16	9/16	3 7/8	3 5/16	3	5/16	200
SF	2.50	4 3/4	4 1/2	5/16	1 1/4	1/2	2 1/16	5/8	4 5/8	3 7/8	3	3/8	360
E	3.00	6	5 3/4	3/8	1 1/2	7/16	2 3/4	7/8	6	5	3	1/2	720
F	3.50	6 3/4	6 1/2	3/8	1 3/4	3/4	3 3/4	1	6 5/8	5 5/8	3	9/16	900
JS	4.00	7 3/4	7 1/2	1/2	1 7/8	11/16	3 3/8	1	7 1/4	6 1/4	3	5/8	1620
MS	4.50	9 1/2	9 1/4	1/2	2 1/8	3/4	4 13/16	1 3/16	9	7 7/8	4	3/4	2700
NS	5.00	10 1/4	10	5/8	2 3/8	1	6	1 1/2	10	8 1/2	4	7/8	3600
PS	6.00	12 1/4	12	7/8	3 1/8	13/16	6 1/2	1 1/2	11 3/4	10	4	1	5400
WS	8.00	15 1/4	14 3/4	15/16	3 5/8	1 5/16	7 1/4	1 3/4	15	12 3/4	4	1 1/8	7200
SS	10.00	17 1/2	17	1 1/8	4 1/8	1 3/16	8 3/4	2	17 3/8	15	5	1 1/4	9000
ZS	12.00	22	21 1/2	1 1/4	4 7/8	1 1/16	8 3/4	2	22	19	5	1 1/8	7200

*Max bore of QD hubs is the maximum recommended for 2 hub assemblies, such as conveyor

CORPORATE OFFICE

PO Box 287
Pella, IA 50219
www.ppipella.com

800.247.1228
641.628.3115
fax 641.628.3658

WEST COAST

Service Center
Sacramento, CA
800.821.9798
fax 916.386.0545

SOUTHWEST

Service Center
Arlington, TX
800.247.1228
fax 641.628.3658

NORTHEAST

Service Center
Lewisberry, PA
800.247.1228
fax 641.628.3658

SOUTHEAST

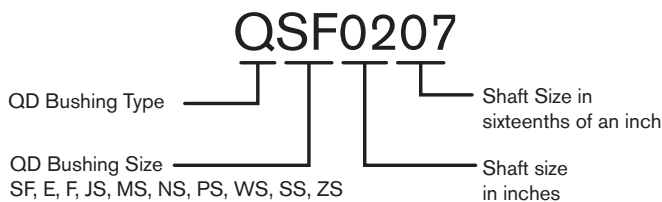
Service Center
Cleveland, TN
800.247.1228
fax 641.628.3658

QD[®] KEY SIZES

Hub	Bore Range	Key way			HUB	Bore Range	Key way		
		Shaft	Bushing	Key stock			Shaft	Bushing	Key stock
SH	1/2 - 9/16	1/8x1/16	1/8x1/16	1/8x1/8	F	113/16-21/4	1/2x1/4	1/2x1/4	1/2x1/2
	5/8 - 7/8	3/16x3/32	3/16x3/32	3/16x3/16		25/16-23/4	5/8x5/16	5/8x5/16	5/8x5/8
	15/16-11/4	1/4x1/8	1/4x1/8	1/4x1/4		213/16-31/4	3/4x3/8	3/4x3/8	3/4x3/4
	1 5/16 - 1 3/8	5/16x5/32	5/16x5/32	5/16x5/16		3 5/16-33/4	7/8x7/16	7/8x3/16	7/8x5/8
SDS	1 7/16 - 1 5/8	3/8x3/16	3/8x1/16	3/8x1/4	JS	313/16-4	NONE	NONE	NONE
	111/16	NONE	NONE	NONE		213/16-31/4	3/4x3/8	3/4x3/8	3/4x3/4
	1/2-9/16	1/8x1/16	1/8x1/16	1/8x1/8		35/16-33/4	7/8x7/16	7/8x7/16	7/8x7/8
	5/8-7/8	3/16x3/32	3/16x3/32	3/16x3/16		313/16	1x1/2	1x1/2	1x1
SK	15/16-11/4	1/4x1/8	1/4x1/8	1/4x1/4	MS	3 7/8-4	1x1/2	1x1/4	1x3/4
	15/16-13/8	5/16x5/32	5/16x5/32	5/16x5/16		4 1/16-41/2	1x1/2	1x1/8	1x5/8
	17/16-15/8	3/8x3/16	3/8x3/16	3/8x3/8		213/16-31/4	3/4x3/8	3/4x3/8	3/4x3/4
	111/16-13/4	3/8x3/16	3/8x1/8	3/8x5/16		35/16-33/4	7/8x7/16	7/8x7/16	7/8x7/8
SF	113/16-2	NONE	NONE	NONE	NS	313/16-41/2	1x1/2	1x1/2	1x1
	1/2-9/16	1/8x1/16	1/8x1/16	1/8x1/8		49/16-43/4	11/4x5/8	11/4x5/8	11/4x11/4
	5/8-7/8	3/16x3/32	3/16x3/32	3/16x3/16		4 13/16-51/4	11/4x5/8	11/4x3/8	11/4x1
	15/16-11/4	1/4x1/8	1/4x1/8	1/4x1/4		5 5/16-51/2	11/4x5/8	11/4x1/4	11/4x7/8
E	15/16-13/8	5/16x5/32	5/16x5/32	5/16x5/16	PS	35/16-33/4	7/8x7/16	7/8x7/16	7/8x7/8
	17/16-13/4	3/8x3/16	3/8x3/16	3/8x3/8		313/16-41/2	1x1/2	1x1/2	1x1
	113/16-21/8	1/2x1/4	1/2x1/4	1/2x1/2		49/16-51/4	11/4x5/8	11/4x5/8	11/4x11/4
	2 3/16-21/4	1/2x1/4	1/2x1/8	1/2x3/8		5 5/16-51/2	11/4x5/8	11/4x3/8	11/4x1
E	2 5/16-21/2	5/8x5/16	5/8x1/16	5/8x3/8	WS	5 9/16-6	11/2x3/4	11/2x1/4	11/2x1
	29/16-25/8	NONE	NONE	NONE		313/16-41/2	1x1/2	1x1/2	1x1
	15/16-11/4	1/4x1/8	1/4x1/8	1/4x1/4		49/16-51/2	11/4x5/8	11/4x5/8	11/4x11/4
	15/16-13/8	5/16x5/32	5/16x5/32	5/16x5/16		59/16-61/4	11/2x3/4	11/2x3/4	11/2x11/2
E	17/16-13/4	3/8x3/16	3/8x3/16	3/8x3/8	SS	6 5/16-61/2	11/2x3/4	11/2x1/2	11/2x11/4
	113/16-21/4	1/2x1/4	1/2x1/4	1/2x1/2		6 9/16-7	13/4x3/4	13/4x1/4	13/4x1
	25/16	5/8x5/16	5/8x5/16	5/8x5/8		59/16-61/2	11/2x3/4	11/2x3/4	11/2x11/2
	2 3/8-21/2	5/8x5/16	5/8x3/16	5/8x1/2		69/16-71/2	13/4x3/4	13/4x3/4	13/4x11/2
E	2 9/16-23/4	5/8x5/16	5/8x1/16	5/8x3/8	ZS	79/16-81/8	2x3/4	2x3/4	2x11/2
	2 13/16-215/16	NONE	NONE	NONE		8 3/16-81/2	2x3/4	2x1/4	2x1
	15/16-13/8	5/16x5/32	5/16x5/32	5/16x5/16		69/16-71/2	13/4x3/4	13/4x3/4	13/4x11/2
	17/16-13/4	3/8x3/16	3/8x3/16	3/8x3/8		79/16-9	2x3/4	2x3/4	2x11/2
E	113/16-21/4	1/2x1/4	1/2x1/4	1/2x1/2	ZS	9 1/16-91/2	21/2x7/8	21/2x7/8	21/2x13/4
	25/16-23/4	5/8x5/16	5/8x5/16	5/8x5/8		9 9/16-10	21/2x7/8	21/2x1/4	21/2x11/8
	213/16-27/8	3/4x3/8	3/4x3/8	3/4x3/4		79/16-9	2x3/4	2x3/4	2x11/2
	2 15/16-31/4	3/4x3/8	3/4x1/8	3/4x1/2		91/16-11	21/2x7/8	21/2x7/8	21/2x13/4
E	3 5/16-31/2	NONE	NONE	NONE	ZS	111/16-12	3x1	3x1	3x2

Keys are provided for shaded cells only, (non-standard key sizes)

Unshaded key sizes are FULL Depth Keys



CORPORATE OFFICE

PO Box 287
Pella, IA 50219
www.ppipella.com

800.247.1228
641.628.3115
fax 641.628.3658

WEST COAST

Service Center
Sacramento, CA
800.821.9798
fax 916.386.0545

SOUTHWEST

Service Center
Arlington, TX
800.247.1228
fax 641.628.3658

NORTHEAST

Service Center
Lewisberry, PA
800.247.1228
fax 641.628.3658

SOUTHEAST

Service Center
Cleveland, TN
800.247.1228
fax 641.628.3658



QD[®] METRIC SIZES

METRIC DIMENSIONS (mm)						DIMENSIONS CONVERTED TO ENGLISH UNITS (in)				
HUB	Bore	Shaft	Bushing	Key stock	Length	HUB	Bore	Key Width	Key Height	Length
SF	25-30	8x4	8x3.3	8x7	53	SF	0.984-1.181	0.315	0.276	21/16
	35	10x5	10x3.3	10x8			1.378	0.394	0.315	
	40	12x5	12x3.3	12x8			1.575	0.472	0.315	
	45-50	14x5.5	14x3.8	14x9			1.772-1.969	0.551	0.354	
	55	16x6	16x4.3	16x10			2.165	0.63	0.394	
	60	18x7	18x4.4	18x11			2.362	0.709	0.433	
	65-75	None	None	None			2.559-2.953	None	None	
E	35	10x5	10x3.3	10x8	70	E	1.378	0.394	0.315	23/4
	40	12x5	12x3.3	12x8			1.575	0.472	0.315	
	45-50	14x5.5	14x3.8	14x9			1.772-1.969	0.551	0.354	
	55	16x6	16x4.3	16x10			2.165	0.63	0.394	
	60-65	18x7	18x4.4	18x11			2.362-2.559	0.709	0.433	
	70	20x7.5	20x4.9	20x12			2.756	0.787	0.472	
	75-90	None	None	None			2.953-3.543	None	None	
F	45-50	14x5.5	14x3.8	14x9	95	F	1.772-1.969	0.551	0.354	33/4
	55	16x6	16x4.3	16x10			2.165	0.63	0.394	
	60-65	18x7	18x4.4	18x11			2.362-2.559	0.709	0.433	
	70-75	20x7.5	20x4.9	20x12			2.756-2.953	0.787	0.472	
	80-85	22x9	22x5.4	22x14			3.150-3.346	0.866	0.551	
	90	25x9	25x5.4	25x14			3.543	0.984	0.551	
	95-100	None	None	None			3.740-3.937	None	None	
JS	60-65	18x7	18x4.4	18x11	85	JS	2.362-2.559	0.709	0.433	33/8
	70-75	20x7.5	20x4.9	20x12			2.756-2.953	0.787	0.472	
	80-85	22x9	22x5.4	22x14			3.150-3.346	0.866	0.551	
	90-95	25x9	25x5.4	25x14			3.543-3.740	0.984	0.551	
	100-110	28x10	28x6.4	28x16			3.937-4.331	1.102	0.63	
MS	80-85	22x9	22x5.4	22x14	122	MS	3.150-3.346	0.866	0.551	413/16
	90-95	25x9	25x5.4	25x14			3.543-3.740	0.984	0.551	
	100-110	28x10	28x6.4	28x16			3.937-4.331	1.102	0.63	
NS	115-130	32x11	32x7.4	32x18	152	NS	4.528-5.118	1.26	0.709	6
	100-110	28x10	28x6.4	28x16			3.937-4.331	1.102	0.63	
PS	115-130	32x11	32x7.4	32x18	165	PS	4.528-5.118	1.26	0.709	61/2
	135-140	36x12	36x8.4	36x20			5.312-5.512	1.417	0.787	
WS	150	36x12	36x8.4	36x20	184	WS	5.906	1.417	0.787	71/4
	160	40x13	40x9.4	40x22			6.299	1.575	0.866	
	170	40x13	40x9.4	40x22			6.693	1.575	0.866	
	180	45x15	45x10.4	45x25			7.087	1.772	0.984	

Metric Keys Standards are for rectangular keys. All keys are standard full depth keys. Keys for Metric Bores are not supplied with the bushing

CORPORATE OFFICE

PO Box 287
Pella, IA 50219
www.ppipella.com

800.247.1228
641.628.3115
fax 641.628.3658

WEST COAST

Service Center
Sacramento, CA
800.821.9798
fax 916.386.0545

SOUTHWEST

Service Center
Arlington, TX
800.247.1228
fax 641.628.3658

NORTHEAST

Service Center
Lewisberry, PA
800.247.1228
fax 641.628.3658

SOUTHEAST

Service Center
Cleveland, TN
800.247.1228
fax 641.628.3658