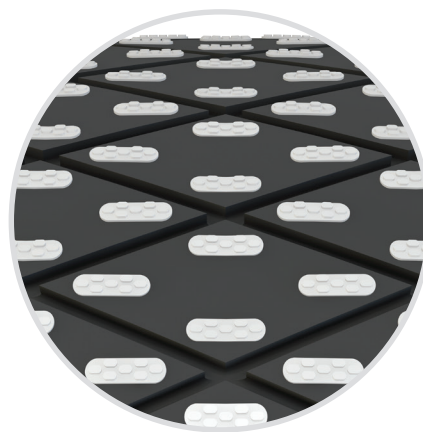


PPI's patented VEC Lagging starts with SBR or Neoprene lagging that is hot vulcanized onto a pulley. Our uniquely designed tiles are then embedded in the vulcanized lagging. This design eliminates seams, where failures often start. It also allows ceramic lagging to be applied to pulleys as small as 4" in diameter, something that cannot be achieved using cured lagging pads.

FEATURES AND BENEFITS

- The process starts with a lagging that has been hot vulcanized onto the pulley for the most reliable bond possible
- PPI then uses a patented technique to embed ceramic tiles into the hot vulcanized lagging
- Tile coverage can be adjusted
- PPI's unique tile shape allows use on smaller diameter pulleys
- Choices of lagging grooving depending on the percentage of tile coverage
- For use on fabric belting only, with PIW rating of 1000 or less.



www.ppi-global.com | sales@ppi-global.com

Product shown are for illustrative purposes only and may display optional accessories or components. Please contact your sales representative for more information on product specifications. PPI respectively reserves the right to make changes in engineering, design and specifications; add improvements; or discontinue manufacturing at any time without notice obligation. PPI and its respective logos are trademarks of Precision, Inc. in the US and or other countries.