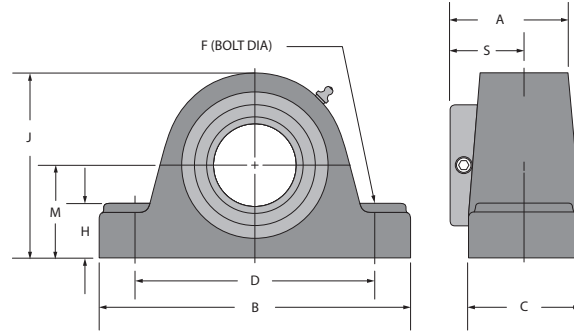


SCM bearings are a popular and economical option for many conveyor applications. Our rugged PPI SCM bearing features a nitrile contact seal that has proven to be effective in the contaminated environments that are common in our industry. Their ease of installation and universal SCM interchange make them a great replacement option.

FEATURES AND BENEFITS

- Rugged one piece cast-iron housing
- Medium duty ball bearing
- Effective contact seals
- Wide inner ring for improved load distribution
- Mounting set screws are located 120° apart for minimum inner ring distortion
- Recessed housing base to accommodate uneven mounting surfaces
- Two bolt base standard
- Ideal for conveyor applications
- Stocked at service centers across the USA for quick delivery



PART NUMBER	SHAFT DIAMETER	DIMENSIONS										WT. (LB)
		A	B	C	D		F	H	J	M	S	
					MIN	MAX						
606200C	1 3/16	1 11/16	6 7/8	2 1/4	4 11/16	5 5/16	1/2	25/32	3 11/16	1 7/8	1	3
606201C	1 7/16	1 15/16	8	2 1/4	5 5/32	6 3/16	1/2	7/8	4 1/8	2 1/8	1 3/16	4
606202C	1 11/16	2 1/32	8 3/4	2 5/8	5 5/8	6 21/32	5/8	11/32	4 9/16	2 5/16	1 9/32	6
606203C	1 15/16	2 3/16	9 1/2	2 7/8	6 3/32	7 3/8	5/8	11/16	4 15/16	2 1/2	1 5/16	7
606204C	2 3/16	2 9/16	10 1/4	3 1/8	6 13/16	7 11/16	3/4	1 3/16	5 1/2	2 3/4	1 9/16	9
606205C	2 7/16	2 9/16	11 1/4	3 9/32	7 3/8	8 5/8	3/4	1 1/4	5 15/16	3	1 9/16	11
606206C	2 15/16	3 1/4	13	3 1/2	8 1/16	9 31/32	7/8	1 3/8	6 13/16	3 1/2	1 15/16	15
606207C	3 7/16	4 3/32	15	4 3/8	9 27/32	12 7/16	7/8	1 25/32	8 1/16	4	2 13/32	26



www.ppi-global.com | sales@ppi-global.com

Product shown are for illustrative purposes only and may display optional accessories or components. Please contact your sales representative for more information on product specifications. PPI respectively reserves the right to make changes in engineering, design and specifications; add improvements; or discontinue manufacturing at any time without notice obligation. PPI and its respective logos and trademarks of Precision, Inc. in the US and or other countries.