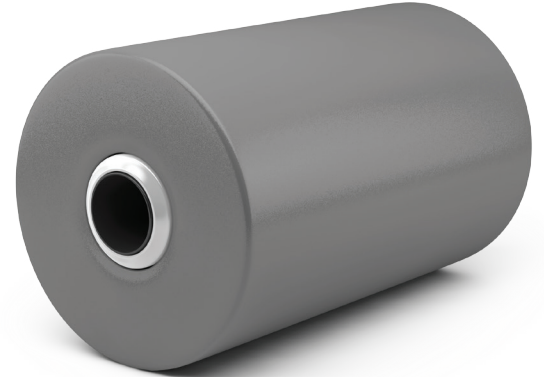
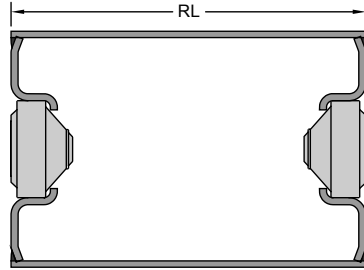
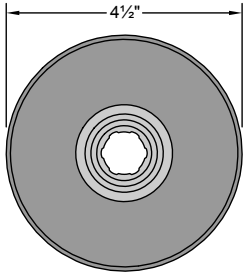


CB504 ROLLS



Part #	Roll Length	Wt	Part #	Roll Length	Wt	Part #	Roll Length	Wt
3504-3	3	3.1	3504-17.5	17 1/2	9.9	3504-32.5	32 1/2	17
3504-4	4	3.6	3504-18.25	18 1/4	10.3	3504-33	33	17.2
3504-5	5	4.1	3504-18.5	18 1/2	10.4	3504-33.25	33 1/4	17.3
3504-5.5	5 1/2	4.4	3504-19.5	19 1/2	10.9	3504-33.5	33 1/2	17.4
3504-6	6	4.6	3504-20	20	11.1	3504-34	34	17.7
3504-6.5	6 1/2	4.8	3504-20.5	20 1/2	11.4	3504-34.25	34 1/4	17.8
3504-6.75	6 3/4	4.9	3504-20.75	20 3/4	11.5	3504-34.5	34 1/2	17.9
3504-7.5	7 1/2	5.2	3504-21	21	11.6	3504-35	35	18.1
3504-7.63	7 5/8	5.3	3504-22	22	12	3504-35.5	35 1/2	18.4
3504-8	8	5.5	3504-22.5	22 1/2	12.3	3504-36	36	18.6
3504-8.5	8 1/2	5.7	3504-23	23	12.5	3504-36.5	36 1/2	18.9
3504-8.75	8 3/4	5.9	3504-23.75	23 3/4	12.9	3504-37.5	37 1/2	19.3
3504-9	9	6	3504-24	24	13	3504-38	38	19.5
3504-9.25	9 1/4	6.1	3504-24.25	24 1/4	13.1	3504-38.5	38 1/2	19.8
3504-9.5	9 1/2	6.2	3504-24.5	24 1/2	13.2	3504-39	39	20
3504-9.75	9 3/4	6.3	3504-25.5	25 1/2	13.7	3504-39.25	39 1/4	20.1
3504-10	10	6.4	3504-25.75	25 3/4	13.8	3504-40	40	20.5
3504-10.25	10 1/4	6.6	3504-26	26	13.9	3504-40.5	40 1/2	20.7
3504-10.5	10 1/2	6.7	3504-26.25	26 1/4	14	3504-41	41	20.9
3504-11	11	6.9	3504-26.5	26 1/2	14.1	3504-43	43	21.9
3504-11.5	11 1/2	7.1	3504-26.75	26 3/4	14.3	3504-44	44	22.4
3504-12	12	7.4	3504-27	27	14.4	3504-45	45	22.8
3504-12.25	12 1/4	7.5	3504-27.75	27 3/4	14.7	3504-45.5	45 1/2	23
3504-12.5	12 1/2	7.6	3504-28	28	14.9	3504-46	46	23.3
3504-12.75	12 3/4	7.7	3504-28.25	28 1/4	15	3504-46.5	46 1/2	23.5
3504-13	13	7.8	3504-28.5	28 1/2	15.1	3504-49.88	49 7/8	25.1
3504-14	14	8.5	3504-28.75	28 3/4	15.2	3504-50	50	25.2
3504-14.5	14 1/2	8.6	3504-29	29	15.3	3504-50.25	50 1/4	25.3
3504-15	15	8.8	3504-29.75	29 3/4	15.7	3504-51.25	51 1/4	25.8
3504-15.5	15 1/2	9	3504-30.5	30 1/2	16	3504-52.5	52 1/2	26.3
3504-15.75	15 3/4	9.1	3504-31	31	16.3	3504-54.75	54 3/4	27.4
3504-16.25	16 1/4	9.4	3504-31.5	31 1/2	16.5	3504-56	56	28.2
3504-16.5	16 1/2	9.5	3504-32	32	16.7	3504-60	60	29.9
3504-17	17	9.7	3504-32.13	32 1/8	16.8	3504-63	63	31.3

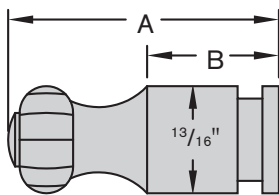
CB504 ROLLS

Contact your local PPI rep for other sizes/roll lengths.

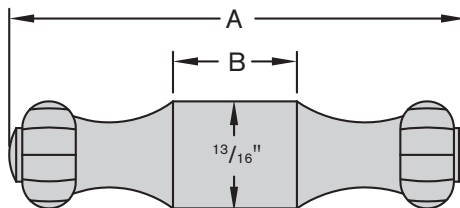
For CB504 replacement rolls to fit Marco[®] frames, see our Marco[®] Catalog, available from your local PPI rep or download from our website at <http://www.ppipella.com>

CB504 Stub Shafts					
Part #	Description	Type	A	B	Wt
40450	End Stub Shaft	I	1 15/16	15/16	0.21
40451	End Stub Shaft	I	2 1/2	1 1/2	0.30
40452	End Stub Shaft	I	3	2	0.37
40453	End Stub Shaft	III	1 15/16	13/16	0.19
40455	Center Stub Shaft	II	2 5/8	3/8	0.24
40456	Center Stub Shaft	II	2 5/8	5/8	0.26
40458	Center Stub Shaft	II	3	1	0.34
40459	Center Stub Shaft	II	2 3/4	3/4	0.29
40460	Center Stub Shaft	II	3 3/32	3/8	0.28
40461	Center Stub Shaft	II	3 3/32	1 3/32	0.36
40462	Center Stub Shaft	II	3 9/16	3/8	0.33

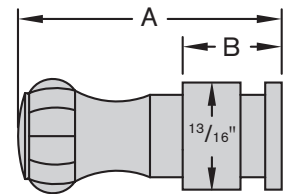
Standard End Stub Shaft - Type I



Standard Center Stub Shaft - Type II



Special End Stub Shaft - Type III



Marco[®] is a registered trademark of Continental Manufacturing Co.

CORPORATE OFFICE

PO Box 287
Pella, IA 50219
www.ppipella.com

800.247.1228
641.628.3115
fax 641.628.3658

WEST COAST

Service Center
Sacramento, CA
800.821.9798
fax 916.386.0545

SOUTHWEST

Service Center
Arlington, TX
800.247.1228
fax 641.628.3658

NORTHEAST

Service Center
Lewisberry, PA
800.247.1228
fax 641.628.3658

SOUTHEAST

Service Center
Cleveland, TN
800.247.1228
fax 641.628.3658