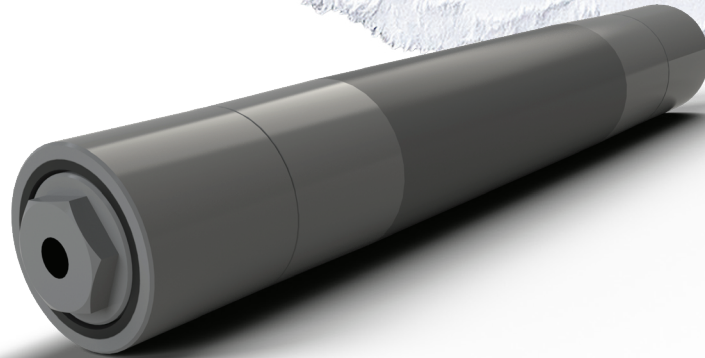


# TIGHT TRANSFER ROLLER



PPI has designed a new Tight Transfer Roller (TTR) for high load unit handling applications. The TTR utilizes a patented cartridge design to maximize the load capacity while minimizing diameter. The 2.25" roller diameter is ideal for conveying applications requiring minimum gap to reduce package movement on belts operating in excess of 540 feet per minute. The TTR roller has been shown to provide longer bearing life than through-shaft ball and spherical roller bearing designs.

## FEATURES AND BENEFITS

- 2.25" edge crown tube
- Low TIR (Total Indicator Run-Out)
- 1/2-13 UNC bolt attachment point
- 1-1/8" Hexagonal shaft end for easy bolt tightening
- Sealed for life

ASSEMBLY PART #	BETWEEN FRAME
TTR225EX10.00	10.00
TTR225EX15.00	15.00
TTR225EX15.50	15.50
TTR225EX16.00	16.00
TTR225EX21.00	21.00
TTR225EX21.50	21.50
TTR225EX22.00	22.00
TTR225EX25.00	25.00
TTR225EX27.00	27.00
TTR225EX27.50	27.50
TTR225EX28.00	28.00
TTR225EX33.00	33.00
TTR225EX33.50	33.50
TTR225EX34.00	34.00
TTR225EX36.00	36.00
TTR225EX37.50	37.50
TTR225EX38.00	38.00
TTR225EX39.50	39.50
TTR225EX40.00	40.00
TTR225EX41.50	41.50
TTR225EX42.00	42.00
TTR225EX43.00	43.00

\*additional sizes available upon request

[WWW.PPI-GLOBAL.COM](http://WWW.PPI-GLOBAL.COM) | [SALES@PPI-GLOBAL.COM](mailto:SALES@PPI-GLOBAL.COM)

Product shown are for illustrative purposes only and may display optional accessories or components. Please contact your sales representative for more information on product specifications. PPI respectively reserves the right to make changes in engineering, design and specifications; add improvements; or discontinue manufacturing at any time without notice obligation. PPI and its respective logos are trademarks of Precision, Inc. in the US and or other countries.