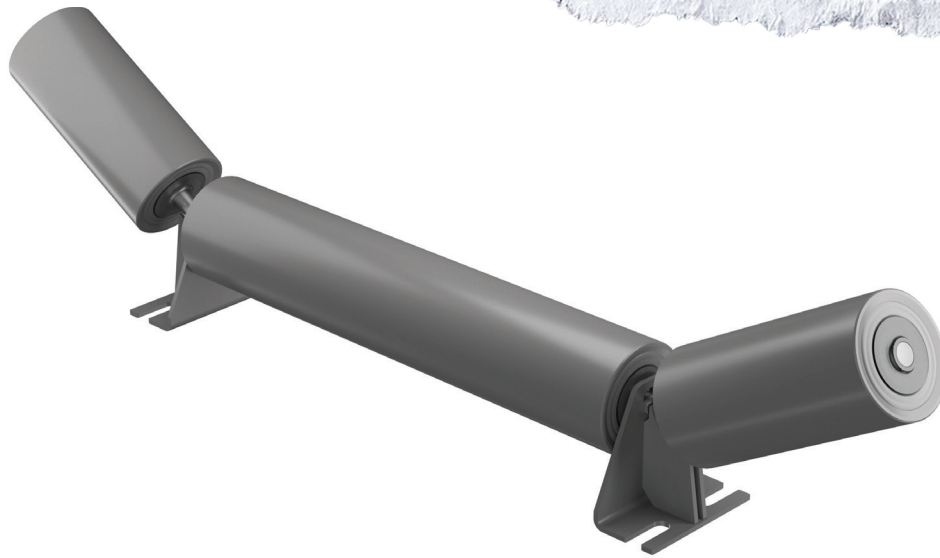


# CANTILEVER WING IDLER



PPI's Cantilever Wing series is designed to seamlessly interchange with many mobile crusher and screening equipment manufacturers' original conveyor components. Gain peace of mind that your equipment will operate better than new when installing PPI's trusted idler rolls.

## FEATURES AND BENEFITS

- Light weight option is ideal for portable equipment
- Utilizes PPI's proven idler seal system providing exceptional roll life
- Interchangeable with many tracked crushers original equipment
- Available in 20°, 30°, & 45° trough angles
- Part number example: C4-30CW-24



# CANTILEVER WING IDLER

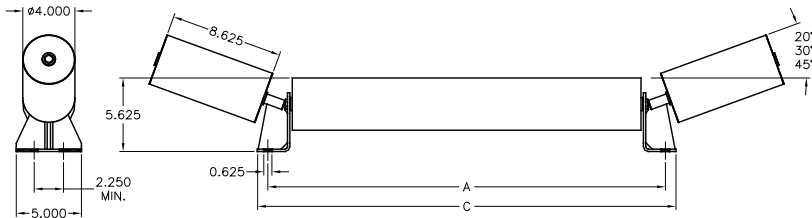
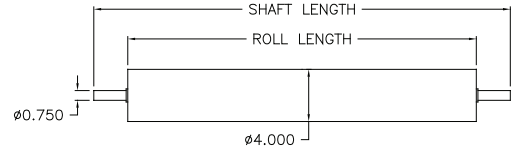


## PPI CANTILEVER WING IDLERS

ASSEMBLY PART NUMBER	ASSEMBLY WEIGHT	CENTER ROLL PART NUMBER - LENGTH	WING ASSEMBLY PART NUMBER	A	C
C4-20CW-24	25.2	AD183-8.125	40062-20-8.625	11.875	13.500
C4-20CW-28	28.2	AD183-12.000		15.750	17.375
C4-20CW-30	29.5	AD183-14.875		18.625	20.250
C4-20CW-34	32.0	AD183-18.875		22.625	24.250
C4-20CW-36	33.2	AD183-20.813		24.563	26.188
C4-20CW-40	36.0	AD183-25.125		28.875	30.500
C4-20CW-42	37.0	AD183-26.750		30.500	32.125
C4-20CW-48	42.3	AD183-35.063		38.813	40.438
C4-20CW-54	42.8	AD183-35.813		39.563	41.188
C4-30CW-24	25.2	AD183-8.125	40062-30-8.625	11.875	13.500
C4-30CW-28	28.2	AD183-12.000		15.750	17.375
C4-30CW-30	29.5	AD183-14.875		18.625	20.250
C4-30CW-34	32.0	AD183-18.875		22.625	24.250
C4-30CW-36	33.3	AD183-20.813		24.563	26.188
C4-30CW-40	36.0	AD183-25.125		28.875	30.500
C4-30CW-42	37.0	AD183-26.750		30.500	32.125
C4-30CW-48	42.3	AD183-35.063		38.813	40.438
C4-30CW-54	42.8	AD183-35.813		39.563	41.188
C4-45CW-24	25.3	AD183-8.125	40062-45-8.625	11.875	13.500
C4-45CW-28	28.3	AD183-12.000		15.750	17.375
C4-45CW-30	29.5	AD183-14.875		18.625	20.250
C4-45CW-34	32.1	AD183-18.875		22.625	24.250
C4-45CW-36	33.3	AD183-20.813		24.563	26.188
C4-45CW-40	36.0	AD183-25.125		28.875	30.500
C4-45CW-42	37.1	AD183-26.750		30.500	32.125
C4-45CW-48	42.4	AD183-35.063		38.813	40.438
C4-45CW-54	42.8	AD183-35.813		39.563	41.188

## 4" DIAMETER RETURN ROLLS WITH PLAIN SHAFT

PART NUMBER	BW	ROLL LENGTH	SHAFT LENGTH
34449-28.000	24	28.000	33.000
34449-32.000	28	32.000	37.000
34449-33.500	-	33.500	38.500
34449-33.625	-	33.625	38.625
34449-34.000	30	34.000	39.000
34449-35.500	-	35.500	40.500
34449-38.000	34	38.000	43.000
34449-40.000	36	40.000	45.000
34449-44.000	40	44.000	49.000
34449-46.000	42	46.000	51.000
34449-52.000	48	52.000	57.000
34449-53.500	-	53.500	58.500
34449-58.000	54	58.000	63.000
34449-62.000	-	62.000	67.000



\*Many sizes and configurations available for different series of equipment, please contact your sales representative for more details

[WWW.PPI-GLOBAL.COM](http://WWW.PPI-GLOBAL.COM) | [SALES@PPI-GLOBAL.COM](mailto:SALES@PPI-GLOBAL.COM)

Product shown are for illustrative purposes only and may display optional accessories or components. Please contact your sales representative for more information on product specifications. PPI respectively reserves the right to make changes in engineering, design and specifications; add improvements; or discontinue manufacturing at any time without notice obligation. PPI and its respective logos are trademarks of Precision, Inc. in the US and or other countries. Copyright ©2021 Precision Pulley & Idler, all rights reserved.