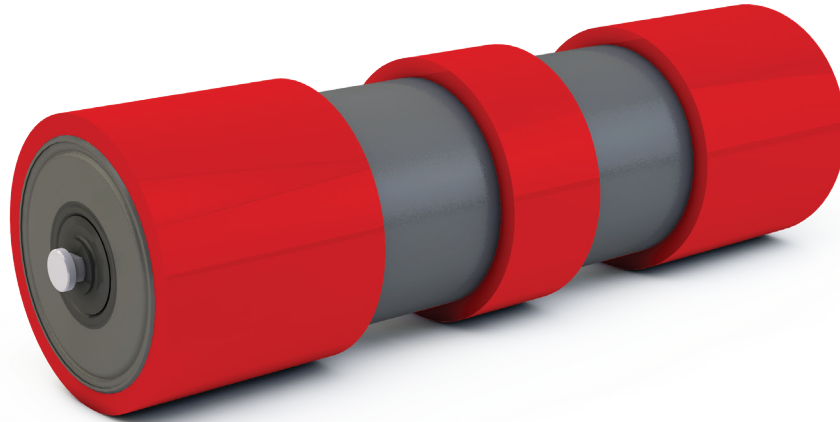


URETHANE SLEEVE ROLL



Utilizing PPI's standard steel return rolls, urethane sleeves are pressed on to the roll to provide an abrasion resistant surface for the return path of the belt. Material carry-back on the belt often causes standard steel rolls build up with debris causing belt tracking issues and can lead to premature wear. Urethane material properties promote excellent abrasion resistance and its slick surface prevents material build up.

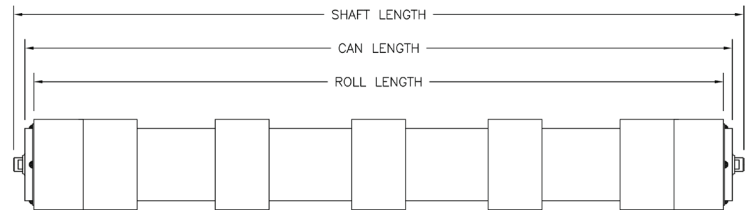
FEATURES AND BENEFITS

- Low profile prevents belt from getting stuck between discs
- Urethane has longer wear life than rubber
- High abrasion resistance
- More cost effective than urethane discs
- Available in CEMA C5, C6, D5 and D6 return rolls

URETHANE SLEEVE ROLL



PART NUMBER	ROLL LENGTH	CAN LENGTH	SHAFT LENGTH
C5-UR-18SB	20.313	21.375	22.625
C5-UR-20SB	22.313	23.375	24.625
C5-UR-24SB	26.313	27.375	28.625
C5-UR-30SB	32.313	33.375	34.625
C5-UR-36SB	38.313	39.375	40.625
C5-UR-42SB	44.313	45.375	46.625
C5-UR-48SB	50.313	51.375	52.625
C5-UR-54SB	56.250	57.375	58.625
C5-UR-60SB	62.313	63.375	64.625
C6-UR-18SB	20.375	21.375	22.625
C6-UR-20SB	22.375	23.375	24.625
C6-UR-24SB	26.375	27.375	28.625
C6-UR-30SB	32.250	33.375	34.625
C6-UR-36SB	38.250	39.375	40.625
C6-UR-42SB	44.250	45.375	46.625
C6-UR-48SB	50.250	51.375	52.625
C6-UR-54SB	56.188	57.375	58.625
C6-UR-60SB	62.250	63.375	64.625
D5-UR-18SB	20.375	21.375	22.625
D5-UR-20SB	22.375	23.375	24.625
D5-UR-24SB	26.375	27.375	28.625
D5-UR-30SB	32.250	33.375	34.625
D5-UR-36SB	38.250	39.375	40.625
D5-UR-42SB	44.250	45.375	46.625
D5-UR-48SB	50.250	51.375	52.625
D5-UR-54SB	56.188	57.375	58.625
D5-UR-60SB	62.250	63.375	64.625
D5-UR-66SB	68.063	69.375	70.625
D5-UR-72SB	74.188	75.375	76.625
D6-UR-18SB	20.375	21.375	22.625
D6-UR-20SB	22.375	23.375	24.625
D6-UR-24SB	26.375	27.375	28.625
D6-UR-30SB	32.250	33.375	34.625
D6-UR-36SB	38.250	39.375	40.625
D6-UR-42SB	44.250	45.375	46.625
D6-UR-48SB	50.250	51.375	52.625
D6-UR-54SB	56.188	57.375	58.625
D6-UR-60SB	62.250	63.375	64.625
D6-UR-66SB	68.063	69.375	70.625
D6-UR-72SB	74.188	75.375	76.625



- Urethane discs are 3" wide
- Part numbers listed are for roll only
- Roll with brackets part number example: C5-URR-24SB
- CEMA C uses 14200 drop bracket
- CEMA D uses 14206 drop bracket

WWW.PPI-GLOBAL.COM | SALES@PPI-GLOBAL.COM

Product shown are for illustrative purposes only and may display optional accessories or components. Please contact your sales representative for more information on product specifications. PPI respectively reserves the right to make changes in engineering, design and specifications; add improvements; or discontinue manufacturing at any time without notice obligation.

PPI and its respective logos are trademarks of Precision, Inc. in the US and or other countries.

PPI 060-05

Copyright ©2021 Precision Pulley & Idler, all rights reserved.

06/21