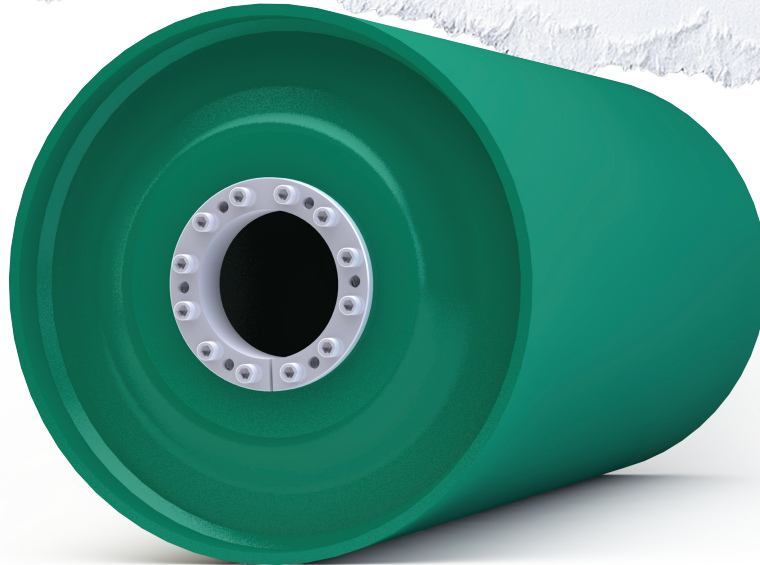


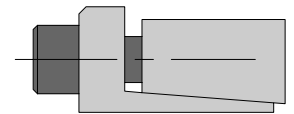
KEYLESS LOCKING ASSEMBLIES



The standard in keyless locking assemblies is the RBL, it is self-centering, and no pilot bushing is needed. The single taper design is better able to handle the bending movement present in pulley applications. For high-tension applications, PPI recommends the RBM and the RBH. For extreme applications an RBZ version is also available.

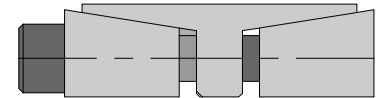
FEATURES AND BENEFITS

- Keyless locking assemblies are excellent at handling bending movement
- Developed for high torque applications



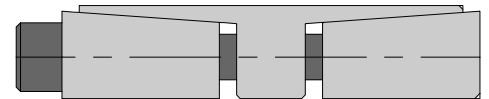
RBL
(BENDING RATING 104)

Compatible with B-Loc B106, MAV 1061, or RFN 7006



RBM
(BENDING RATING 197)

Compatible with B-Loc B115, MAV 1008, or RFN 7009



RBH
(BENDING RATING 280)

Compatible with B-Loc B112, MAV 4061, or RFN 7005

LOCKING ASSEMBLY	ALLOWABLE BENDING MOVEMENT
RBL	28%
RBM	32%
RBH	35%

KEYLESS LOCKING ASSEMBLIES



Metric (mm)	English (in)	RBL (ft-lb)	RBM (ft-lb)	RBH (ft-lb)
25	1	308		
30	1 3/16	370		
35	1 3/8	576		
40	1 1/2	658		
45	1 3/4	1,196		
50	1 15/16	1,329		
55	2 3/16	1,671		
60	2 3/8	1,823		
65	2 9/16	2,222		
70	2 3/4	3,377	5,250	8,525
75	2 15/16	3,618	5,625	9,134
80	3	3,859	7,500	10,718
85	3 3/8	4,613	8,187	11,387
90	3 7/16	4,885	9,281	13,154
95	3 3/4	5,729	9,796	13,884
100	3 15/16	7,024	14,049	20,078
110	4 7/16	7,726	15,454	24,093
120	4 3/4	9,482	18,545	30,664
130	4 15/16	14,095	25,570	38,839
140	5 7/16	15,179	29,503	48,796
150	5 15/16	18,070	31,611	56,016
160		21,202	35,966	63,734
170	6 7/16	24,576	48,866	80,767
180	6 15/16	26,021	51,741	91,627
190	7 7/16	34,333	58,256	103,165
200	7 7/8	36,140	68,988	108,595
220	8.661	44,201	86,200	134,386
240	9.449	60,273	125,382	162,893
260	10.236	78,355	142,622	185,290
280	11.024	90,252	170,781	266,248
300	11.811	108,786	182,980	316,962
320	12.598	150,537	260,238	354,998
340	13.386	186,603	276,502	395,146
360	14.173	210,810	362,543	494,555
380	14.961	259,609	382,684	546,888
400	15.748	273,272	443,108	628,006
420	16.535		507,560	659,406
440	17.323		531,730	690,807
460	18.11		555,899	722,207
480	18.898		382,970	879,208
500	19.685		629,415	915,842
520	20.472		733,143	1,020,509
540	21.26		761,340	1,059,760
560	22.047		845,939	1,172,278
580	22.835		876,146	1,214,145
600	23.622		906,358	1,295,262

*This is a partial list of available series and sizes.

WWW.PPI-GLOBAL.COM | SALES@PPI-GLOBAL.COM

Product shown are for illustrative purposes only and may display optional accessories or components. Please contact your sales representative for more information on product specifications. PPI respectively reserves the right to make changes in engineering, design and specifications; add improvements; or discontinue manufacturing at any time without notice obligation. PPI and its respective logos are trademarks of Precision, Inc. in the US and or other countries. Copyright ©2021 Precision Pulley & Idler, all rights reserved.