

STATIC END ROLLER TUBE



PPI Static End Rollers provide a safe, reliable solution to exposed work zones. They are designed to eliminate the potential pinch point caused between a rotating roller and the moving conveyor belt. Entanglement of Foreign Objects and Debris (FOD) is also reduced as a result of stationary roller ends.

FEATURES AND BENEFITS

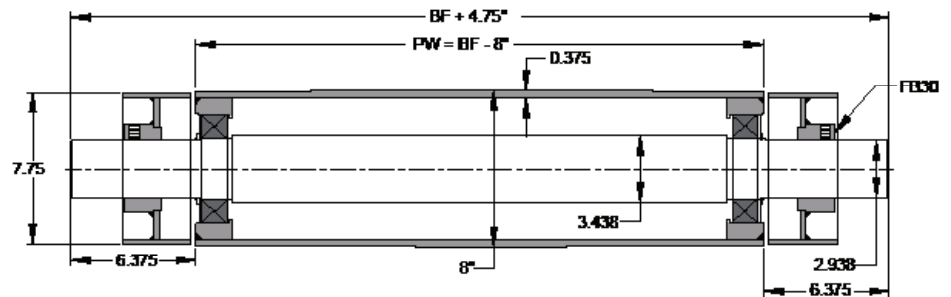
- Static design eliminates pinch points between belt and roller
- Solid oil filled double row spherical roller bearings do not require re-lubing
- Bolts on to many present systems
- Many shaft end details available, contact your PPI representative for details
- Tube is machined to stringent tolerances minimizing runout

STATIC END ROLLER TUBE



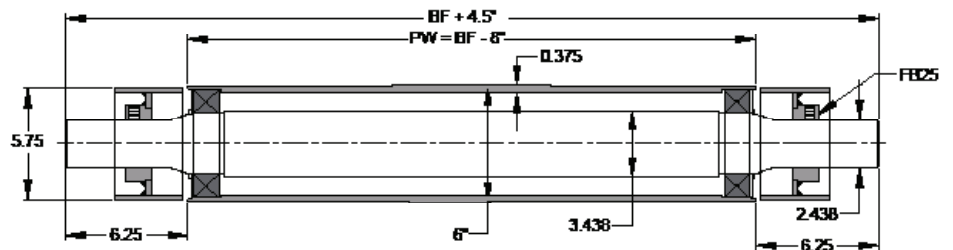
8" Pulley - Dead End 24#

BETWEEN FRAMES (inches)	PULLEY WIDTH (inches)	SSP WEIGHT (lbs)	TOTAL WEIGHT (lbs)
37	29	180	228
43	35	210	258
49	41	242	290
61.5	53.5	30	355



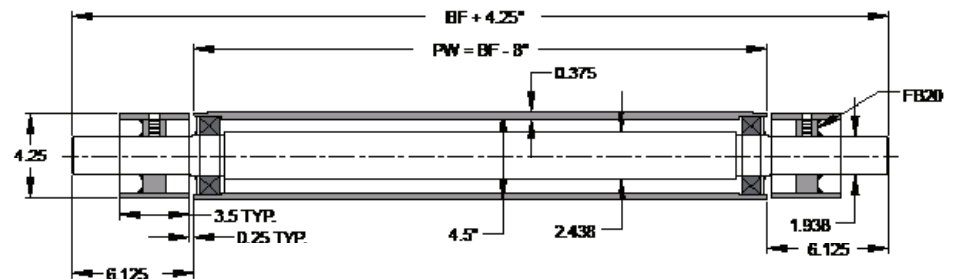
6" Pulley - Dead End 14#

BETWEEN FRAMES (inches)	PULLEY WIDTH (inches)	SSP WEIGHT (lbs)	TOTAL WEIGHT (lbs)
37	29	154	178
43	35	180	204
49	41	207	231
61.5	53.5	264	288



4 1/2" Pulley - Dead End 7#

BETWEEN FRAMES (inches)	PULLEY WIDTH (inches)	SSP WEIGHT (lbs)	TOTAL WEIGHT (lbs)
37	29	86	100
43	35	102	116
49	41	117	131
61.5	53.5	148	162



WWW.PPI-GLOBAL.COM | SALES@PPI-GLOBAL.COM

Product shown are for illustrative purposes only and may display optional accessories or components. Please contact your sales representative for more information on product specifications. PPI respectively reserves the right to make changes in engineering, design and specifications; add improvements; or discontinue manufacturing at any time without notice obligation. PPI and its respective logos are trademarks of Precision, Inc. in the US and or other countries. Copyright ©2021 Precision Pulley & Idler, all rights reserved.