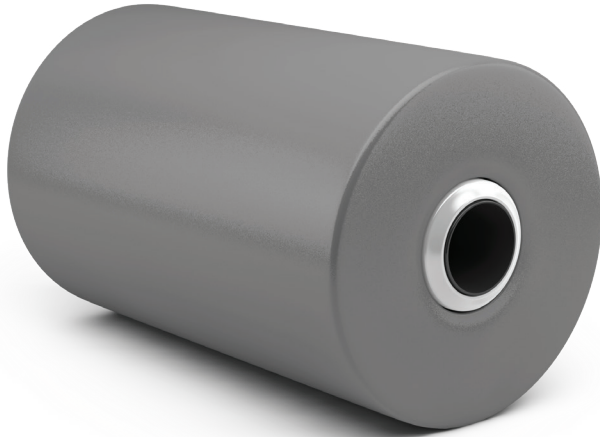
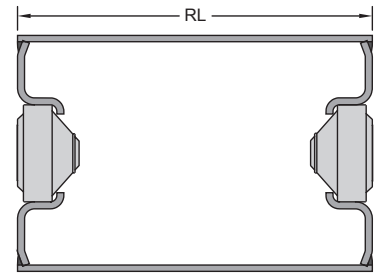
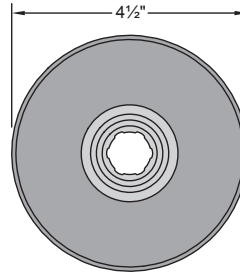


CB504 ROLLS



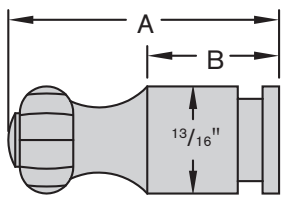
PPI provides the Marco Idler product line along with CB504 replacement rolls for stub shafts, bearings and rubber discs.



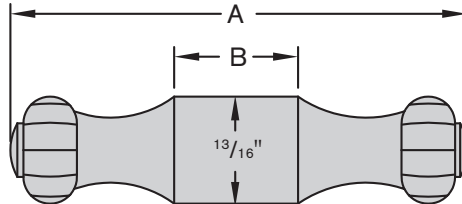
PART #	ROLL LENGTH	WT	PART #	ROLL LENGTH	WT	PART #	ROLL LENGTH	WT
3504-3	3	3.1	3504-17.5	17 1/2	9.9	3504-32.5	32 1/2	17
3504-4	4	3.6	3504-18.25	18 1/4	10.3	3504-33	33	17.2
3504-5	5	4.1	3504-18.5	18 1/2	10.4	3504-33.25	33 1/4	17.3
3504-5.5	5 1/2	4.4	3504-19.5	19 1/2	10.9	3504-33.5	33 1/2	17.4
3504-6	6	4.6	3504-20	20	11.1	3504-34	34	17.7
3504-6.5	6 1/2	4.8	3504-20.5	20 1/2	11.4	3504-34.25	34 1/4	17.8
3504-6.75	6 3/4	4.9	3504-20.75	20 3/4	11.5	3504-34.5	34 1/2	17.9
3504-7.5	7 1/2	5.2	3504-21	21	11.6	3504-35	35	18.1
3504-7.63	7 5/8	5.3	3504-22	22	12	3504-35.5	35 1/2	18.4
3504-8	8	5.5	3504-22.5	22 1/2	12.3	3504-36	36	18.6
3504-8.5	8 1/2	5.7	3504-23	23	12.5	3504-36.5	36 1/2	18.9
3504-8.75	8 3/4	5.9	3504-23.75	23 3/4	12.9	3504-37.5	37 1/2	19.3
3504-9	9	6	3504-24	24	13	3504-38	38	19.5
3504-9.25	9 1/4	6.1	3504-24.25	24 1/4	13.1	3504-38.5	38 1/2	19.8
3504-9.5	9 1/2	6.2	3504-24.5	24 1/2	13.2	3504-39	39	20
3504-9.75	9 3/4	6.3	3504-25.5	25 1/2	13.7	3504-39.25	39 1/4	20.1
3504-10	10	6.4	3504-25.75	25 3/4	13.8	3504-40	40	20.5
3504-10.25	10 1/4	6.6	3504-26	26	13.9	3504-40.5	40 1/2	20.7
3504-10.5	10 1/2	6.7	3504-26.25	26 1/4	14	3504-41	41	20.9
3504-11	11	6.9	3504-26.5	26 1/2	14.1	3504-43	43	21.9
3504-11.5	11 1/2	7.1	3504-26.75	26 3/4	14.3	3504-44	44	22.4
3504-12	12	7.4	3504-27	27	14.4	3504-45	45	22.8
3504-12.25	12 1/4	7.5	3504-27.75	27 3/4	14.7	3504-45.5	45 1/2	23
3504-12.5	12 1/2	7.6	3504-28	28	14.9	3504-46	46	23.3
3504-12.75	12 3/4	7.7	3504-28.25	28 1/4	15	3504-46.5	46 1/2	23.5
3504-13	13	7.8	3504-28.5	28 1/2	15.1	3504-49.88	49 7/8	25.1
3504-14	14	8.5	3504-28.75	28 3/4	15.2	3504-50	50	25.2
3504-14.5	14 1/2	8.6	3504-29	29	15.3	3504-50.25	50 1/4	25.3
3504-15	15	8.8	3504-29.75	29 3/4	15.7	3504-51.25	51 1/4	25.8
3504-15.5	15 1/2	9	3504-30.5	30 1/2	16	3504-52.5	52 1/2	26.3
3504-15.75	15 3/4	9.1	3504-31	31	16.3	3504-54.75	54 3/4	27.4
3504-16.25	16 1/4	9.4	3504-31.5	31 1/2	16.5	3504-56	56	28.2
3504-16.5	16 1/2	9.5	3504-32	32	16.7	3504-60	60	29.9
3504-17	17	9.7	3504-32.13	32 1/8	16.8	3504-63	63	31.3

CB504 STUB SHAFTS					
PART #	DESCRIPTION	TYPE	A	B	WT
40450	End Stub Shaft	I	1 15/16	15/16	0.21
40451	End Stub Shaft	I	2 1/2	1 1/2	0.30
40452	End Stub Shaft	I	3	2	0.37
40453	End Stub Shaft	III	1 15/16	13/16	0.19
40455	Center Stub Shaft	II	2 5/8	3/8	0.24
40456	Center Stub Shaft	II	2 5/8	5/8	0.26
40458	Center Stub Shaft	II	3	1	0.34
40459	Center Stub Shaft	II	2 3/4	3/4	0.29
40460	Center Stub Shaft	II	3 3/32	3/8	0.28
40461	Center Stub Shaft	II	3 3/32	1 3/32	0.36
40462	Center Stub Shaft	II	3 9/16	3/8	0.33

Standard End Stub Shaft - Type I



Standard Center Stub Shaft - Type II



Special End Stub Shaft - Type III

