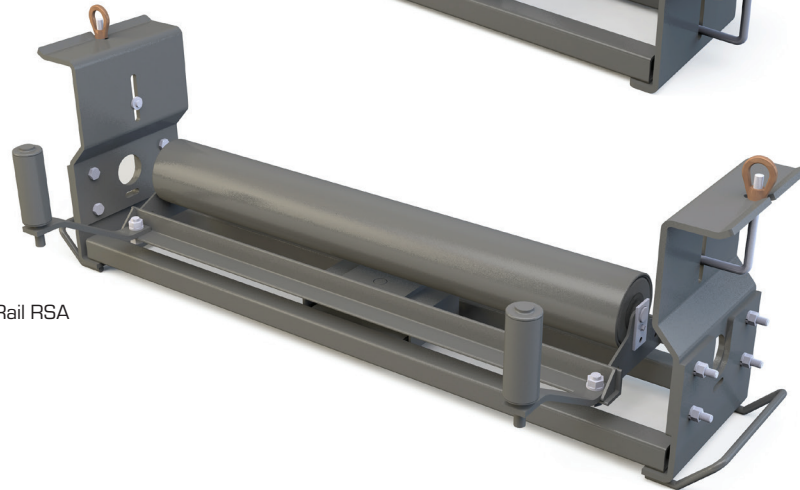


Rigid Rail TESA



Rigid Rail RSA

PPI's Rigid Rail Self-Aligning Idlers incorporate the same belt training characteristics as standard guide arm self aligners but integrate the mounting convenience of J-bolt hardware. Utilizing the J-bolt style mounting configuration allows the user to easily mount these training idlers to their existing rigid rail idler structure.

FEATURES AND BENEFITS

- Available in troughing and return roll configurations
- Built to same rigid specifications as standard idlers
- Mounting brackets designed to mount on standard structure rail systems
- Designed to match existing idler roll heights
- Carry handles incorporated on the return rolls for ease of installation
- Return drop brackets equipped with alignment slot to aid installation
- Available in CEMA C, D and E
- Roll diameters of 4", 5", 6" and 7" available
- Belt widths of 24" - 84"