

WE KEEP IT MOVING

ENGINEERING & DIMENSIONS

RETRO ROLLS®



TABLE OF CONTENTS

4-5

Retro Part Numbering System
Retro Nut Instructions for C/D Adapter Nuts

CONTINENTAL RETRO ROLLS*

6-7

CEMA C & Wire Ropes
CEMA D, E

FMC RETRO ROLLS*

8-9

CEMA C & D7000
CEMA D, E

GOODMAN RETRO ROLLS*

10-11

CEMA C
CEMA D, E

HEWITT-ROBINS RETRO ROLLS*

12-13

CEMA C
CEMA D, E

14

LUFF RETRO ROLLS*

15

REXNORD RETRO ROLLS*

16

STEPHENS-ADAMSON (SA) RETRO ROLLS*

17

SUPERIOR RETRO ROLLS*

18

TRANSALL/DBT RETRO ROLLS*

19

Retro Nut Dimensions for C/D Adapter Nuts

SPECIAL OR NON-STANDARD RETRO ROLLS

20

Retro Drawings/Diagrams
Retro Chart

C5-FMTE-11.00

CEMA Series
B, C, D, E

Fits Idler Frame
See Below

Manufacturer's Roll Length
Round to nearest hundredth

Roll Diameter
4", 5", 6", 7"

Idler Type
TE = Equal Troughing
FL = Return Roll
TEI = Equal Troughing Impact
RI = Rubber Disc Return Roll
FLI = Flat Carrier Rubber Disc

ZINC NUT (standard)

CR	Continental
FM	FMC Linkbelt
GM	Goodman
HR	Hewitt Robins
RX	Rexnord
SU	Superior

STEEL NUT (option/impact)

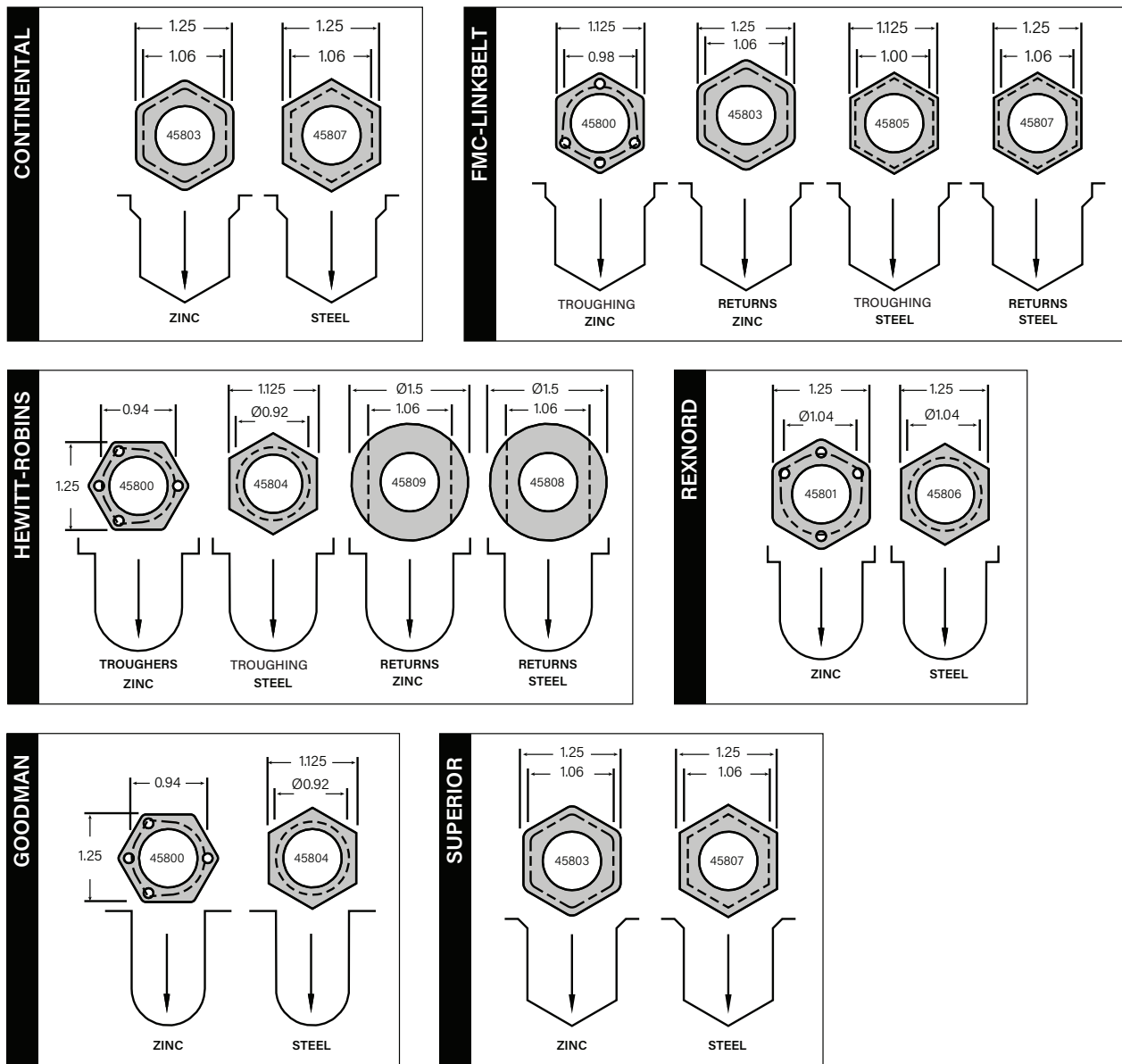
CS	Continental
FS	FMC Linkbelt
GS	Goodman
HS	Hewitt Robins
RS	Rexnord
SS	Superior

BROACH END (No nut)

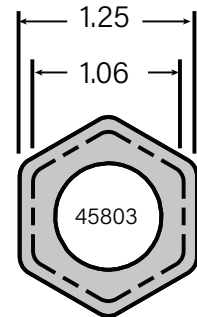
SA	Stephens Adamson
LU	Luff
PR	Prescismeca
TR	Transall (DBT)

RETRO NUT INSTRUCTIONS

- Retro Roll® adapters are to be installed as shown in detail below for the particular idler manufacturer
- Please note the orientation of the hex and the location of the identification mark on the zinc nuts
- Adapter nuts are threaded on the shaft with UNF threads and may be adjusted to fit your application if necessary
- For replacement adapter nuts, order by part number indicated below. (T=Troughing, R=Return)

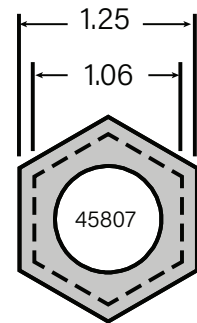


CONTINENTAL CEMA C TROUGHING IDLER						
Belt Width	4" Roll Diameter		5" Roll Diameter		6" Roll Diameter	
	Part Number	Weight	Part Number	Weight	Part Number	Weight
18	C4-CRTE-7.00	7	C5-CRTE-7.00	8	C6-CRTE-7.00	10
24	C4-CRTE-9.00	8	C5-CRTE-9.00	10	C6-CRTE-9.00	12
30	C4-CRTE-11.00	9	C5-CRTE-11.00	11	C6-CRTE-11.00	14
36	C4-CRTE-13.00	10	C5-CRTE-13.00	13	C6-CRTE-13.00	16
42	C4-CRTE-15.00	11	C5-CRTE-15.00	14	C6-CRTE-15.00	18
48	C4-CRTE-17.00	13	C5-CRTE-17.00	16	C6-CRTE-17.00	20
54	C4-CRTE-19.00	14	C5-CRTE-19.00	17	C6-CRTE-19.00	21
60	C4-CRFL-21.00	15	C5-CRFL-21.00	19	C6-CRFL-21.00	23



ZINC

CONTINENTAL CEMA C RETURN						
Belt Width	4" Roll Diameter		5" Roll Diameter		6" Roll Diameter	
	Part Number	Weight	Part Number	Weight	Part Number	Weight
24	C4-CRFL-27.00	19	C5-CRFL-27.00	23	C6-CRFL-27.00	29
30	C4-CRFL-33.00	23	C5-CRFL-33.00	28	C6-CRFL-33.00	35
36	C4-CRFL-39.00	27	C5-CRFL-39.00	33	C6-CRFL-39.00	40
42	C4-CRFL-45.00	31	C5-CRFL-45.00	37	C6-CRFL-45.00	46
48	C4-CRFL-51.00	34	C5-CRFL-51.00	42	C6-CRFL-51.00	52
54	C4-CRFL-57.00	38	C5-CRFL-57.00	46	C6-CRFL-57.00	57
60	C4-CRFL-63.00	42	C5-CRFL-63.00	51	C6-CRFL-63.00	63



STEEL

CONTINENTAL CEMA C WIRE ROPE				
Belt Width	5" Roll Diameter		6" Roll Diameter	
	Part Number	Weight	Part Number	Weight
36	C5-CRWR-14.25	14	C6-CRWR-14.25	17
42	C5-CRWR-16.25	15	C6-CRWR-16.25	19
48	C5-CRWR-18.25	17	C6-CRWR-18.25	21
54	C5-CRWR-20.25	19	C6-CRWR-20.25	23
60	C5-CRWR-22.25	20	C6-CRWR-22.25	25

CONTINENTAL CEMA D WIRE ROPE				
Belt Width	5" Roll Diameter		6" Roll Diameter	
	Part Number	Weight	Part Number	Weight
36	D5-CRWR-14.25	16	D6-CRWR-14.25	19
42	D5-CRWR-16.25	18	D6-CRWR-16.25	21
48	D5-CRWR-18.25	18	D6-CRWR-18.25	24
54	D5-CRWR-20.25	21	D6-CRWR-20.25	26
60	D5-CRWR-22.25	23	D6-CRWR-22.25	29

- Steel idler rolls have zinc nuts on CEMA C & D as standard. If steel nuts are desired, simply replace the CR in the part number with CS, e.g. C4-CRTE-7.00 becomes C4-CSTE-7.00 (E use steel nuts on all idler rolls)
- To specify 1/4" thick steel idler roll, add H to the beginning of the part number, e.g. C4-CRTE-7.00 becomes HC4-CRTE-7.00
- To specify plastic sleeve over the steel idler rolls, add PS to the end of the part number, e.g. C4-CRTE-7.00 becomes C4-CRTE-7.00PS
- Rubber disc idler rolls have steel nuts (on the following page) as standard
- Zinc nuts are not available on E idler rolls or impact rolls
- These part numbers are for the idler rolls with the hex nut ends. Contact your local PPI sales representative if you need the idler roll with a broach end
- This is a partial list of Retro Rolls® that are available representing the most common requested items. Contact your PPI sales representative for options not listed here. For customized idler rolls, use the charts on page 20 and 21 and send information to PPI

STEEL IDLER ROLLS

RUBBER DISC IDLER ROLLS

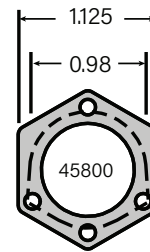
CONTINENTAL CEMA D TROUGHING					CONTINENTAL CEMA D IMPACT			
Belt Width	5" Roll Diameter		6" Roll Diameter		5" Roll Diameter		6" Roll Diameter	
	Part Number	Weight	Part Number	Weight	Part Number	Weight	Part Number	Weight
18	D5-CRTE-7.00	9	D6-CRTE-7.00	11	D5-CSTEI-6.50	9	D6-CSTEI-6.50	11
24	D5-CRTE-9.00	11	D6-CRTE-9.00	13	D5-CSTEI-8.50	12	D6-CSTEI-8.50	14
30	D5-CRTE-11.00	13	D6-CRTE-11.00	15	D5-CSTEI-10.50	14	D6-CSTEI-10.50	17
36	D5-CRTE-13.00	15	D6-CRTE-13.00	17	D5-CSTEI-12.50	17	D6-CSTEI-12.50	20
42	D5-CRTE-15.00	16	D6-CRTE-15.00	19	D5-CSTEI-14.50	20	D6-CSTEI-14.50	24
48	D5-CRTE-17.00	18	D6-CRTE-17.00	21	D5-CSTEI-16.50	22	D6-CSTEI-16.50	26
54	D5-CRTE-19.00	20	D6-CRTE-19.00	23	D5-CSTEI-18.50	24	D6-CSTEI-18.50	30
60	D5-CRFL-21.00	21	D6-CRFL-21.00	25	D5-CSTEI-20.50	26	D6-CSTEI-20.50	32
72	D5-CRFL-25.00	26	D6-CRFL-25.00	30	D5-CSTEI-24.50	34	D6-CSTEI-24.50	37

CONTINENTAL CEMA D RETURN					CONTINENTAL CEMA D RUBBER DISC			
Belt Width	5" Roll Diameter		6" Roll Diameter		5" Roll Diameter		6" Roll Diameter	
	Part Number	Weight	Part Number	Weight	Part Number	Weight	Part Number	Weight
18	D5-CRFL-21.00	21	D6-CRFL-21.00	25	D5-CSRI-20.50	23	D6-CSRI-20.50	27
24	D5-CRFL-27.00	27	D6-CRFL-27.00	31	D5-CSRI-26.50	27	D6-CSRI-26.50	31
30	D5-CRFL-33.00	32	D6-CRFL-33.00	38	D5-CSRI-32.50	32	D6-CSRI-32.50	36
36	D5-CRFL-39.00	37	D6-CRFL-39.00	44	D5-CSRI-38.50	36	D6-CSRI-38.50	41
42	D5-CRFL-45.00	42	D6-CRFL-45.00	50	D5-CSRI-44.50	41	D6-CSRI-44.50	46
48	D5-CRFL-51.00	47	D6-CRFL-51.00	56	D5-CSRI-50.50	45	D6-CSRI-50.50	51
54	D5-CRFL-57.00	53	D6-CRFL-57.00	63	D5-CSRI-56.50	50	D6-CSRI-56.50	56
60	D5-CRFL-63.00	58	D6-CRFL-63.00	69	D5-CSRI-62.50	54	D6-CSRI-62.50	61
72	D5-CRFL-75.00	69	D6-CRFL-75.00	82	N/A		N/A	

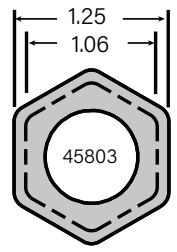
CONTINENTAL CEMA E TROUGHING					CONTINENTAL CEMA E IMPACT			
Belt Width	6" Roll Diameter		7" Roll Diameter		6" Roll Diameter		7" Roll Diameter	
	Part Number	Weight	Part Number	Weight	Part Number	Weight	Part Number	Weight
36	E6-CRTE-13.00	31	E7-CRTE-13.00	35	E6-CRTEI-12.75	39	E7-CRTEI-12.75	44
42	E6-CRTE-15.00	35	E7-CRTE-15.00	40	E6-CRTEI-14.75	44	E7-CRTEI-14.75	49
48	E6-CRTE-17.75	39	E7-CRTE-17.75	43	E6-CRTEI-17.50	50	E7-CRTEI-17.50	55
54	E6-CRTE-19.75	42	E7-CRTE-19.75	47	E6-CRTEI-19.50	55	E7-CRTEI-19.50	59
60	E6-CRTE-21.75	45	E7-CRTE-21.75	51	E6-CRTEI-21.50	59	E7-CRTEI-21.50	64
72	E6-CRTE-25.75	52	E7-CRTE-25.75	59	E6-CRTEI-25.50	70	E7-CRTEI-25.50	75
84	E6-CRTE-29.75	59	E7-CRTE-29.75	67	E6-CRTEI-29.50	78	E7-CRTEI-29.50	81
96	E6-CRTE-33.75	66	E7-CRTE-33.75	74	E6-CRTEI-33.50	89	E7-CRTEI-33.50	91

CONTINENTAL CEMA E RETURN					CONTINENTAL CEMA E RUBBER DISC			
Belt Width	6" Roll Diameter		7" Roll Diameter		6" Roll Diameter		7" Roll Diameter	
	Part Number	Weight	Part Number	Weight	Part Number	Weight	Part Number	Weight
42	E6-CRFL-46.00	87	E7-CRFL-46.00	98	E6-CRRI-45.75	91	E7-CRRI-45.75	92
48	E6-CRFL-52.00	97	E7-CRFL-52.00	109	E6-CRRI-51.75	101	E7-CRRI-51.75	102
54	E6-CRFL-58.00	107	E7-CRFL-58.00	121	E6-CRRI-57.75	111	E7-CRRI-57.75	112
60	E6-CRFL-64.00	117	E7-CRFL-64.00	132	E6-CRRI-63.75	122	E7-CRRI-63.75	124
72	E6-CRFL-76.00	138	E7-CRFL-76.00	156	E6-CRRI-75.75	142	E7-CRRI-75.75	144
84	E6-CRFL-88.00	158	E7-CRFL-88.00	180	E6-CRRI-87.75	163	E7-CRRI-87.75	166
96	E6-CRFL-100.00	179	E7-CRFL-100.00	202	E6-CRRI-99.75	183	E7-CRRI-99.75	186

FMC CEMA C TROUGHING						
Belt Width	4" Roll Diameter		5" Roll Diameter		6" Roll Diameter	
	Part Number	Weight	Part Number	Weight	Part Number	Weight
18	C4-FMTE-6.69	6	C5-FMTE-6.69	8	C6-FMTE-6.69	10
24	C4-FMTE-8.81	7	C5-FMTE-8.81	10	C6-FMTE-8.81	12
30	C4-FMTE-10.81	9	C5-FMTE-10.81	11	C6-FMTE-10.81	14
36	C4-FMTE-12.81	10	C5-FMTE-12.81	13	C6-FMTE-12.81	16
42	C4-FMTE-15.12	11	C5-FMTE-15.12	14	C6-FMTE-15.12	18
48	C4-FMTE-17.12	12	C5-FMTE-17.12	16	C6-FMTE-17.12	20
54	C4-FMTE-19.19	14	C5-FMTE-19.19	18	C6-FMTE-19.19	22
60	C4-FMTE-21.19	15	C5-FMTE-21.19	19	C6-FMTE-21.19	24

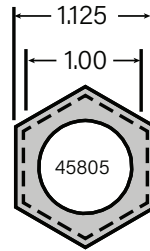


TROUGHING ZINC

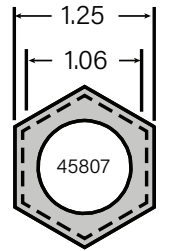


RETURNS ZINC

FMC CEMA C RETURN						
Belt Width	4" Roll Diameter		5" Roll Diameter		6" Roll Diameter	
	Part Number	Weight	Part Number	Weight	Part Number	Weight
18	C4-FMFL-20.62	16	C5-FMFL-20.62	19	C6-FMFL-20.62	23
24	C4-FMFL-26.62	19	C5-FMFL-26.62	23	C6-FMFL-26.62	29
30	C4-FMFL-32.62	23	C5-FMFL-32.62	28	C6-FMFL-32.62	35
36	C4-FMFL-38.62	26	C5-FMFL-38.62	33	C6-FMFL-38.62	40
42	C4-FMFL-44.62	30	C5-FMFL-44.62	37	C6-FMFL-44.62	46
48	C4-FMFL-50.62	34	C5-FMFL-50.62	42	C6-FMFL-50.62	52
54	C4-FMFL-56.62	38	C5-FMFL-56.62	46	C6-FMFL-56.62	57
60	C4-FMFL-62.62	42	C5-FMFL-62.62	51	C6-FMFL-62.62	63



TROUGHING STEEL



RETURNS STEEL

FMC CEMA D"7000" TROUGHING				
Belt Width	5" Roll Diameter		6" Roll Diameter	
	Part Number	Weight	Part Number	Weight
18	D5-SSTTE-6.62	9	D6-SSTTE-6.62	12
24	D5-SSTTE-8.75	11	D6-SSTTE-8.75	14
30	D5-SSTTE-10.75	13	D6-SSTTE-10.75	16
36	D5-SSTTE-12.75	15	D6-SSTTE-12.75	18
42	D5-SSTTE-15.06	17	D6-SSTTE-15.06	21
48	D5-SSTTE-17.06	18	D6-SSTTE-17.06	23
54	D5-SSTTE-19.12	20	D6-SSTTE-19.12	25
60	D5-SSTTE-21.12	22	D6-SSTTE-21.12	27
72	D5-SSTTE-25.12	26	D6-SSTTE-25.12	31

FMC CEMA D"7000" RETURN				
Belt Width	5" Roll Diameter		6" Roll Diameter	
	Part Number	Weight	Part Number	Weight
18	D5-SSTFL-20.81	21	D6-SSTFL-20.81	27
24	D5-SSTFL-26.81	27	D6-SSTFL-26.81	33
30	D5-SSTFL-32.81	32	D6-SSTFL-32.81	40
36	D5-SSTFL-38.81	37	D6-SSTFL-38.81	46
42	D5-SSTFL-44.81	42	D6-SSTFL-44.81	53
48	D5-SSTFL-50.81	47	D6-SSTFL-50.81	59
54	D5-SSTFL-56.81	52	D6-SSTFL-56.81	66
60	D5-SSTFL-62.81	58	D6-SSTFL-62.81	72
72	D5-SSTFL-74.81	70	D6-SSTFL-74.81	85

- Steel idler rolls have zinc nuts on CEMA C & D as standard. If steel nuts are desired, simply replace the FM in the part number with FS, e.g. C5-FMTE-6.69 becomes C5-FSTE-6.69 (E use steel nuts on all idler rolls)
- To specify 1/4" thick steel idler rolls, add H to the beginning of the part number, e.g. C5-FMTE-6.69 becomes HC5-FMTE-6.69
- To specify plastic sleeve over the steel idler rolls, add PS to the end of the part number, e.g. C5-FMTE-6.69 becomes C5-FMTE-6.69PS
- Rubber disc rolls have steel nuts (on the following page) as standard
- Zinc nuts are not available on E idler rolls
- Zinc nuts are not available on impact idler rolls
- This is a partial list of Retro Rolls® that are available representing the most common requested items. Contact your PPI Rep for options not listed
- For special or unusual rolls, use the charts on page 20 and 21 and send this info to PPI

STEEL IDLER ROLLS

RUBBER DISC IDLER ROLLS

FMC CEMA D"3000" TROUGHING					FMC CEMA D"3000" IMPACT			
Belt Width	5" Roll Diameter		6" Roll Diameter		5" Roll Diameter		6" Roll Diameter	
	Part Number	Weight	Part Number	Weight	Part Number	Weight	Part Number	Weight
18	D5-FMTE-6.69	9	D6-FMTE-6.69	10	D5-FSTEI-6.19	9	D6-FSTEI-6.19	11
24	D5-FMTE-8.81	11	D6-FMTE-8.81	13	D5-FSTEI-8.19	12	D6-FSTEI-8.19	14
30	D5-FMTE-10.81	13	D6-FMTE-10.81	15	D5-FSTEI-10.19	14	D6-FSTEI-10.19	17
36	D5-FMTE-12.81	15	D6-FMTE-12.81	17	D5-FSTEI-12.19	17	D6-FSTEI-12.19	20
42	D5-FMTE-15.12	16	D6-FMTE-15.12	19	D5-FSTEI-14.50	20	D6-FSTEI-14.50	24
48	D5-FMTE-17.12	18	D6-FMTE-17.12	21	D5-FSTEI-16.50	22	D6-FSTEI-16.50	26
54	D5-FMTE-19.19	20	D6-FMTE-19.19	23	D5-FSTEI-18.56	25	D6-FSTEI-18.56	30
60	D5-FMTE-21.19	22	D6-FMTE-21.19	25	D5-FSTEI-20.56	27	D6-FSTEI-20.56	34
72	D5-FMTE-25.19	26	D6-FMTE-25.19	31	N/A		N/A	

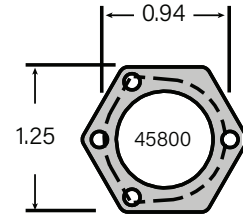
FMC CEMA D"3000" RETURN					FMC CEMA D"3000" RUBBER DISC			
Belt Width	5" Roll Diameter		6" Roll Diameter		5" Roll Diameter		6" Roll Diameter	
	Part Number	Weight	Part Number	Weight	Part Number	Weight	Part Number	Weight
18	D5-FMFL-20.62	22	D6-FMFL-20.62	25	D5-FSRI-20.75	28	D6-FSRI-20.75	32
24	D5-FMFL-26.62	27	D6-FMFL-26.62	31	D5-FSRI-26.75	34	D6-FSRI-26.75	39
30	D5-FMFL-32.62	32	D6-FMFL-32.62	38	D5-FSRI-32.75	40	D6-FSRI-32.75	45
36	D5-FMFL-38.62	37	D6-FMFL-38.62	44	D5-FSRI-38.75	47	D6-FSRI-38.75	52
42	D5-FMFL-44.62	42	D6-FMFL-44.62	50	D5-FSRI-44.75	53	D6-FSRI-44.75	58
48	D5-FMFL-50.62	47	D6-FMFL-50.62	56	D5-FSRI-50.75	59	D6-FSRI-50.75	65
54	D5-FMFL-56.62	53	D6-FMFL-56.62	63	D5-FSRI-56.75	65	D6-FSRI-56.75	71
60	D5-FMFL-62.62	58	D6-FMFL-62.62	69	D5-FSRI-62.75	71	D6-FSRI-62.75	78
72	C5-FMFL-74.62	69	D6-FMFL-74.62	82	D5-FSRI-74.75	84	D6-FSRI-74.75	92

FMC CEMA E TROUGHING					FMC CEMA E IMPACT			
Belt Width	6" Roll Diameter		7" Roll Diameter		6" Roll Diameter		7" Roll Diameter	
	Part Number	Weight	Part Number	Weight	Part Number	Weight	Part Number	Weight
36	E6-FMTEI-13.56	32	E7-FMTEI-13.56	35	E6-FMTEI-13.50	43	E7-FMTEI-13.50	43
42	E6-FMTEI-15.56	35	E7-FMTEI-15.56	39	E6-FMTEI-15.50	47	E7-FMTEI-15.50	48
48	E6-FMTEI-17.56	38	E7-FMTEI-17.56	43	E6-FMTEI-17.50	53	E7-FMTEI-17.50	54
54	E6-FMTEI-19.63	42	E7-FMTEI-19.63	47	E6-FMTEI-19.56	58	E7-FMTEI-19.56	59
60	E6-FMTEI-21.38	45	E7-FMTEI-21.38	50	E6-FMTEI-21.31	62	E7-FMTEI-21.31	63
72	E6-FMTEI-25.25	51	E7-FMTEI-25.25	58	E6-FMTEI-25.19	71	E7-FMTEI-25.19	72
84	E6-FMTEI-29.25	58	E7-FMTEI-29.25	66	E6-FMTEI-29.19	81	E7-FMTEI-29.19	83
96	E6-FMTEI-33.25	65	E7-FMTEI-33.25	73	E6-FMTEI-33.19	91	E7-FMTEI-33.19	94

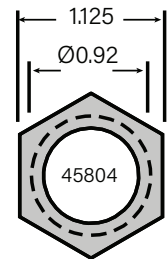
FMC CEMA E RETURN					FMC CEMA E RUBBER DISC			
Belt Width	6" Roll Diameter		7" Roll Diameter		6" Roll Diameter		7" Roll Diameter	
	Part Number	Weight	Part Number	Weight	Part Number	Weight	Part Number	Weight
36	E6-FMFL-39.88	76	E7-FMFL-39.88	86	E6-FMRI-39.69	81	E7-FMRI-39.69	83
42	E6-FMFL-45.88	87	E7-FMFL-45.88	98	E6-FMRI-45.69	91	E7-FMRI-45.69	93
48	E6-FMFL-51.88	97	E7-FMFL-51.88	109	E6-FMRI-51.69	101	E7-FMRI-51.69	103
54	E6-FMFL-57.88	107	E7-FMFL-57.88	121	E6-FMRI-57.69	111	E7-FMRI-57.69	113
60	E6-FMFL-63.88	117	E7-FMFL-63.88	132	E6-FMRI-63.69	121	E7-FMRI-63.69	123
72	E6-FMFL-75.88	138	E7-FMFL-75.88	155	E6-FMRI-75.69	141	E7-FMRI-75.69	143
84	E6-FMFL-87.88	158	E7-FMFL-87.88	179	E6-FMRI-87.69	164	E7-FMRI-87.69	166
96	E6-FMFL-99.88	178	E7-FMFL-99.88	202	E6-FMRI-99.69	184	E7-FMRI-99.69	186

GOODMAN CEMA C TROUGHING						
Belt Width	4" Roll Diameter		5" Roll Diameter		6" Roll Diameter	
	Part Number	Weight	Part Number	Weight	Part Number	Weight
18	C4-GMTE-7.00	6	C5-GMTE-7.00	8	C6-GMTE-7.00	10
24	C4-GMTE-9.13	8	C5-GMTE-9.13	10	C6-GMTE-9.13	12
30	C4-GMTE-11.19	9	C5-GMTE-11.19	11	C6-GMTE-11.19	14
36	C4-GMTE-13.25	11	C5-GMTE-13.25	13	C6-GMTE-13.25	16
42	C4-GMTE-15.38	12	C5-GMTE-15.38	14	C6-GMTE-15.38	18
48	C4-GMTE-17.44	13	C5-GMTE-17.44	16	C6-GMTE-17.44	20
54	C4-GMTE-19.50	14	C5-GMTE-19.50	18	C6-GMTE-19.50	22
60	C4-GMTE-21.63	16	C5-GMTE-21.63	19	C6-GMTE-21.63	24

GOODMAN CEMA C RETURN						
Belt Width	4" Roll Diameter		5" Roll Diameter		6" Roll Diameter	
	Part Number	Weight	Part Number	Weight	Part Number	Weight
18	C4-GMFL-21.00	16	C5-GMFL-21.00	19	C6-GMFL-21.00	24
24	C4-GMFL-27.00	19	C5-GMFL-27.00	24	C6-GMFL-27.00	29
30	C4-GMFL-33.00	23	C5-GMFL-33.00	28	C6-GMFL-33.00	35
36	C4-GMFL-39.00	27	C5-GMFL-39.00	33	C6-GMFL-39.00	41
42	C4-GMFL-45.00	31	C5-GMFL-45.00	37	C6-GMFL-45.00	46
48	C4-GMFL-51.00	35	C5-GMFL-51.00	42	C6-GMFL-51.00	52
54	C4-GMFL-57.00	38	C5-GMFL-57.00	47	C6-GMFL-57.00	58
60	C4-GMFL-63.00	42	C5-GMFL-63.00	51	C6-GMFL-63.00	63



ZINC



STEEL

- Steel idler rolls have zinc nuts on CEMA C & D as standard. If steel nuts are desired, simply replace the GM in the part number with GS, e.g. D5-GMTE-7.00 becomes D5-GSTE-7.00 (E use steel nuts on all idler rolls)
- To specify 1/4" thick steel idler rolls, add H to the beginning of the part number, e.g. D5-GMTE-7.00 becomes HD5-GMTE-7.00
- To specify plastic sleeve over the steel idler rolls, add PS to the end of the part number, e.g. D5-GMTE-7.00 becomes D5-GMTE-7.00PS
- Rubber disc rolls have steel nuts (on the following page) as standard
- Zinc nuts are not available on E idler rolls
- Zinc nuts are not available on impact idler rolls

STEEL IDLER ROLLS

RUBBER DISC IDLER ROLLS

GOODMAN CEMA D TROUGHING					GOODMAN CEMA D IMPACT			
Belt Width	5" Roll Diameter		6" Roll Diameter		5" Roll Diameter		6" Roll Diameter	
	Part Number	Weight	Part Number	Weight	Part Number	Weight	Part Number	Weight
18	D5-GMTE-7.00	9	D6-GMTE-7.00	10	D5-GSTEI-7.00	9	D6-GSTEI-7.00	11
24	D5-GMTE-9.13	12	D6-GMTE-9.13	13	D5-GSTEI-9.13	12	D6-GSTEI-9.13	14
30	D5-GMTE-11.19	13	D6-GMTE-11.19	15	D5-GSTEI-11.19	15	D6-GSTEI-11.19	18
36	D5-GMTE-13.25	15	D6-GMTE-13.25	17	D5-GSTEI-13.25	17	D6-GSTEI-13.25	20
42	D5-GMTE-15.38	16	D6-GMTE-15.38	19	D5-GSTEI-15.38	20	D6-GSTEI-15.38	24
48	D5-GMTE-17.44	18	D6-GMTE-17.44	21	D5-GSTEI-17.44	22	D6-GSTEI-17.44	26
54	D5-GMTE-19.50	20	D6-GMTE-19.50	23	D5-GSTEI-19.50	25	D6-GSTEI-19.50	30
60	D5-GMTE-21.63	22	D6-GMTE-21.63	26	D5-GSTEI-21.63	27	D6-GSTEI-21.63	34
72	D5-GMTE-25.75	27	D6-GMTE-25.75	31	N/A		N/A	

GOODMAN CEMA D RETURN					GOODMAN CEMA D RUBBER DISC			
Belt Width	5" Roll Diameter		6" Roll Diameter		5" Roll Diameter		6" Roll Diameter	
	Part Number	Weight	Part Number	Weight	Part Number	Weight	Part Number	Weight
18	D5-GMFL-21.00	22	D6-GMFL-21.00	25	D5-GSRI-21.00	23	D6-GSRI-21.00	27
24	D5-GMFL-27.00	27	D6-GMFL-27.00	32	D5-GSRI-27.00	27	D6-GSRI-27.00	32
30	D5-GMFL-33.00	32	D6-GMFL-33.00	38	D5-GSRI-33.00	32	D6-GSRI-33.00	36
36	D5-GMFL-39.00	37	D6-GMFL-39.00	44	D5-GSRI-39.00	36	D6-GSRI-39.00	41
42	D5-GMFL-45.00	42	D6-GMFL-45.00	50	D5-GSRI-45.00	41	D6-GSRI-45.00	46
48	D5-GMFL-51.00	48	D6-GMFL-51.00	57	D5-GSRI-51.00	45	D6-GSRI-51.00	51
54	D5-GMFL-57.00	53	D6-GMFL-57.00	63	D5-GSRI-57.00	50	D6-GSRI-57.00	56
60	D5-GMFL-63.00	58	D6-GMFL-63.00	69	D5-GSRI-63.00	55	D6-GSRI-63.00	61
72	D5-GMFL-75.00	71	D6-GMFL-75.00	83	N/A		N/A	

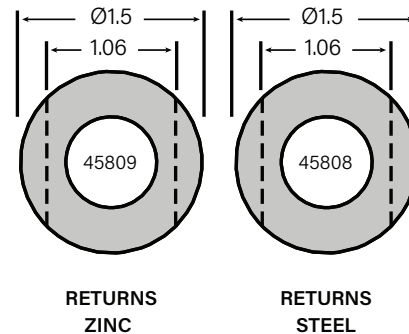
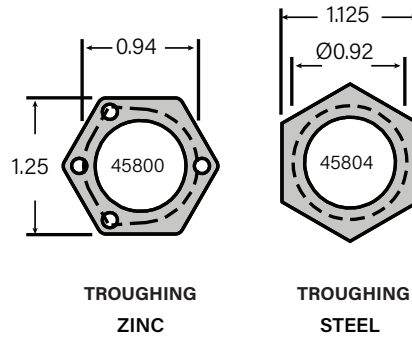
GOODMAN CEMA E TROUGHING					GOODMAN CEMA E IMPACT			
Belt Width	6" Roll Diameter		7" Roll Diameter		6" Roll Diameter		7" Roll Diameter	
	Part Number	Weight	Part Number	Weight	Part Number	Weight	Part Number	Weight
36	E6-GMTE-13.75	32	E7-GMTE-13.75	36	E6-GMTEI-13.75	39	E7-GMTEI-13.75	44
42	E6-GMTE-15.75	35	E7-GMTE-15.75	40	E6-GMTEI-15.75	44	E7-GMTEI-15.75	49
48	E6-GMTE-17.75	39	E7-GMTE-17.75	44	E6-GMTEI-17.75	50	E7-GMTEI-17.75	55
54	E6-GMTE-19.75	42	E7-GMTE-19.75	47	E6-GMTEI-19.75	55	E7-GMTEI-19.75	59
60	E6-GMTE-21.75	46	E7-GMTE-21.75	51	E6-GMTEI-21.75	59	E7-GMTEI-21.75	64
72	E6-GMTE-25.75	52	E7-GMTE-25.75	59	E6-GMTEI-25.75	70	E7-GMTEI-25.75	75
84	E6-GMTE-29.75	59	E7-GMTE-29.75	67	E6-GMTEI-29.75	80	E7-GMTEI-29.75	86
96	E6-GMTE-33.75	66	E7-GMTE-33.75	74	E6-GMTEI-33.75	90	E7-GMTEI-33.75	95

GOODMAN CEMA E RETURN					GOODMAN CEMA E RUBBER DISC			
Belt Width	6" Roll Diameter		7" Roll Diameter		6" Roll Diameter		7" Roll Diameter	
	Part Number	Weight	Part Number	Weight	Part Number	Weight	Part Number	Weight
36	E6-GMFL-40.00	74	E7-GMFL-40.00	86	E6-GMRI-40.00	81	E7-GMRI-40.00	82
42	E6-GMFL-46.00	87	E7-GMFL-46.00	98	E6-GMRI-46.00	91	E7-GMRI-46.00	92
48	E6-GMFL-52.00	97	E7-GMFL-52.00	109	E6-GMRI-52.00	101	E7-GMRI-52.00	102
54	E6-GMFL-58.00	107	E7-GMFL-58.00	121	E6-GMRI-58.00	111	E7-GMRI-58.00	113
60	E6-GMFL-64.00	117	E7-GMFL-64.00	133	E6-GMRI-64.00	122	E7-GMRI-64.00	124
72	E6-GMFL-76.00	138	E7-GMFL-76.00	156	E6-GMRI-76.00	142	E7-GMRI-76.00	144
84	E6-GMFL-88.00	158	E7-GMFL-88.00	179	E6-GMRI-88.00	163	E7-GMRI-88.00	166
96	E6-GMFL-100.00	179	E7-GMFL-100.00	202	E6-GMRI-100.00	183	E7-GMRI-100.00	186

HEWITT-ROBINS CEMA C TROUGHING						
Belt Width	4" Roll Diameter		5" Roll Diameter		6" Roll Diameter	
	Part Number	Weight	Part Number	Weight	Part Number	Weight
18	C4-HRTE-7.13	6	C5-HRTE-7.13	8	C6-HRTE-6.88	10
24	C4-HRTE-9.13	8	C5-HRTE-9.13	10	C6-HRTE-8.88	12
30	C4-HRTE-11.13	9	C5-HRTE-11.13	11	C6-HRTE-10.88	14
36	C4-HRTE-13.13	10	C5-HRTE-13.13	12	C6-HRTE-12.88	16
42	C4-HRTE-15.13	11	C5-HRTE-15.13	14	C6-HRTE-14.88	18
48	C4-HRTE-17.13	13	C5-HRTE-17.13	15	C6-HRTE-16.88	20
54	C4-HRTE-19.13	14	C5-HRTE-19.13	17	C6-HRTE-18.88	22
60	C4-HRTE-21.13	15	C5-HRTE-21.13	19	C6-HRTE-20.88	24

HEWITT-ROBINS CEMA C RETURN						
Belt Width	4" Roll Diameter		5" Roll Diameter		6" Roll Diameter	
	Part Number	Weight	Part Number	Weight	Part Number	Weight
18	C4-HZFL-21.00	16	C5-HZFL-21.00	19	C6-HZFL-20.75	25
24	C4-HZFL-27.00	19	C5-HZFL-27.00	24	C6-HZFL-26.75	31
30	C4-HZFL-33.00	23	C5-HZFL-33.00	28	C6-HZFL-32.75	37
36	C4-HZFL-39.00	27	C5-HZFL-39.00	33	C6-HZFL-38.75	42
42	C4-HZFL-45.00	31	C5-HZFL-45.00	38	C6-HZFL-44.75	48
48	C4-HZFL-51.00	35	C5-HZFL-51.00	42	C6-HZFL-50.75	54
54	C4-HZFL-57.00	38	C5-HZFL-57.00	47	C6-HZFL-56.75	60
60	C4-HZFL-63.00	42	C5-HZFL-63.00	51	C6-HZFL-62.75	66

- Steel idler rolls have zinc nuts on CEMA C & D idler rolls as standard. If steel nuts are desired, simply replace the HR in the part number with HS, e.g. D5-HRTE-7.13 becomes D5-HSTE-7.13 (E use steel nuts on all idler rolls)
- To specify 1/4" thick steel idler rolls, add H to the beginning of the part number, e.g. D5-HRTE-7.13 becomes HD5-HRTE-7.13
- To specify plastic sleeve over the steel idler rolls, add PS to the end of the part number, e.g. D5-HRTE-7.13 becomes D5-HRTE-7.13PS
- Rubber disc idler rolls have steel nuts as standard
- Zinc nuts are not available on E idler rolls
- Zinc nuts are not available on impact idler rolls



STEEL IDLER ROLLS

RUBBER DISC IDLER ROLLS

HEWITT-ROBINS CEMA D TROUGHING					HEWITT-ROBINS CEMA D IMPACT			
Belt Width	5" Roll Diameter		6" Roll Diameter		5" Roll Diameter		6" Roll Diameter	
	Part Number	Weight	Part Number	Weight	Part Number	Weight	Part Number	Weight
18	D5-HRTE-7.13	9	D6-HRTE-6.88	11	D5-HSTEI-7.13	10	D6-HSTEI-6.88	12
24	D5-HRTE-9.13	11	D6-HRTE-8.88	13	D5-HSTEI-9.13	13	D6-HSTEI-8.88	15
30	D5-HRTE-11.13	12	D6-HRTE-10.88	15	D5-HSTEI-11.13	15	D6-HSTEI-10.88	18
36	D5-HRTE-13.13	14	D6-HRTE-12.88	18	D5-HSTEI-13.13	18	D6-HSTEI-12.88	21
42	D5-HRTE-15.13	16	D6-HRTE-14.88	20	D5-HSTEI-15.13	20	D6-HSTEI-14.88	24
48	D5-HRTE-17.13	17	D6-HRTE-16.88	22	D5-HSTEI-17.13	23	D6-HSTEI-16.88	27
54	D5-HRTE-19.13	19	D6-HRTE-18.88	24	D5-HSTEI-19.13	26	D6-HSTEI-18.88	30
60	D5-HRTE-21.13	21	D6-HRTE-20.88	26	D5-HSTEI-21.13	29	D6-HSTEI-20.88	34

HEWITT-ROBINS CEMA D RETURN					HEWITT-ROBINS CEMA D RUBBER DISC			
Belt Width	5" Roll Diameter		6" Roll Diameter		5" Roll Diameter		6" Roll Diameter	
	Part Number	Weight	Part Number	Weight	Part Number	Weight	Part Number	Weight
18	D5-HZFL-21.00	22	D6-HZFL-20.75	27	D5-HXRI-19.13	29	D6-HXRI-19.13	33
24	D5-HZFL-27.00	27	D6-HZFL-26.75	34	D5-HXRI-25.13	35	D6-HXRI-25.13	39
30	D5-HZFL-33.00	32	D6-HZFL-32.75	40	D5-HXRI-31.13	41	D6-HXRI-31.13	46
36	D5-HZFL-39.00	37	D6-HZFL-38.75	47	D5-HXRI-37.13	47	D6-HXRI-37.13	52
42	D5-HZFL-45.00	42	D6-HZFL-44.75	53	D5-HXRI-43.13	53	D6-HXRI-43.13	59
48	D5-HZFL-51.00	47	D6-HZFL-50.75	59	D5-HXRI-49.13	59	D6-HXRI-49.13	65
54	D5-HZFL-57.00	53	D6-HZFL-56.75	66	D5-HXRI-55.13	65	D6-HXRI-55.13	72
60	D5-HZFL-63.00	58	D6-HZFL-62.75	72	D5-HXRI-61.13	72	D6-HXRI-61.13	78

HEWITT-ROBINS CEMA E TROUGHING					HEWITT-ROBINS CEMA E IMPACT			
Belt Width	6" Roll Diameter		7" Roll Diameter		6" Roll Diameter		7" Roll Diameter	
	Part Number	Weight	Part Number	Weight	Part Number	Weight	Part Number	Weight
36	E6-HRTE-13.75	32	E7-HRTE-13.75	36	E6-HRTEI-13.75	43	E7-HRTEI-13.75	44
42	E6-HRTE-15.75	36	E7-HRTE-15.75	40	E6-HRTEI-15.75	48	E7-HRTEI-15.75	49
48	E6-HRTE-17.75	39	E7-HRTE-17.75	44	E6-HRTEI-17.75	54	E7-HRTEI-17.75	55
54	E6-HRTE-19.75	42	E7-HRTE-19.75	48	E6-HRTEI-19.75	58	E7-HRTEI-19.75	60
60	E6-HRTE-21.75	46	E7-HRTE-21.75	51	E6-HRTEI-21.75	63	E7-HRTEI-21.75	65
72	E6-HRTE-25.75	53	E7-HRTE-25.75	59	E6-HRTEI-25.75	73	E7-HRTEI-25.75	74
84	E6-HRTE-29.75	59	E7-HRTE-29.75	67	E6-HRTEI-29.75	84	E7-HRTEI-29.75	86
96	E6-HRTE-33.75	66	E7-HRTE-33.75	75	E6-HRTEI-33.75	93	E7-HRTEI-33.75	95

HEWITT-ROBINS CEMA E RETURN					HEWITT-ROBINS CEMA E RUBBER DISC			
Belt Width	6" Roll Diameter		7" Roll Diameter		6" Roll Diameter		7" Roll Diameter	
	Part Number	Weight	Part Number	Weight	Part Number	Weight	Part Number	Weight
36	E6-HRFL-40.00	90	E7-HRFL-40.00	87	E6-HRRI-35.50	81	E7-HRRI-35.50	82
42	E6-HRFL-46.00	87	E7-HRFL-46.00	98	E6-HRRI-41.50	91	E7-HRRI-41.50	93
48	E6-HRFL-52.00	97	E7-HRFL-52.00	110	E6-HRRI-47.50	101	E7-HRRI-47.50	103
54	E6-HRFL-58.00	107	E7-HRFL-58.00	121	E6-HRRI-53.50	111	E7-HRRI-53.50	113
60	E6-HRFL-64.00	118	E7-HRFL-64.00	133	E6-HRRI-59.50	122	E7-HRRI-59.50	124
72	E6-HRFL-76.00	138	E7-HRFL-76.00	156	E6-HRRI-71.50	142	E7-HRRI-71.50	144
84	E6-HRFL-88.00	158	E7-HRFL-88.00	179	E6-HRRI-83.50	163	E7-HRRI-83.50	166
96	E6-HRFL-100.00	179	E7-HRFL-100.00	202	E6-HRRI-95.50	183	E7-HRRI-95.50	186

LUFF CEMA C TROUGHING

Belt Width	4" Roll Diameter		5" Roll Diameter		6" Roll Diameter	
	Part Number	Weight	Part Number	Weight	Part Number	Weight
18	C4-LUTE-6.75	7	C5-LUTE-6.75	8	C6-LUTE-6.75	10
24	C4-LUTE-8.75	9	C5-LUTE-8.75	10	C6-LUTE-8.75	12
30	C4-LUTE-10.75	10	C5-LUTE-10.75	11	C6-LUTE-10.75	14
36	C4-LUTE-12.75	11	C5-LUTE-12.75	13	C6-LUTE-12.75	16
42	C4-LUTE-14.75	12	C5-LUTE-14.75	14	C6-LUTE-14.75	18
48	C4-LUTE-16.75	14	C5-LUTE-16.75	16	C6-LUTE-16.75	20
54	C4-LUTE-18.75	15	C5-LUTE-18.75	17	C6-LUTE-18.75	22
60	C4-LUTE-20.75	16	C5-LUTE-20.75	19	C6-LUTE-20.75	24

LUFF CEMA C RETURN

Belt Width	4" Roll Diameter		5" Roll Diameter		6" Roll Diameter	
	Part Number	Weight	Part Number	Weight	Part Number	Weight
18	C4-LUFL-21.75	18	C5-LUFL-21.75	21	C6-LUFL-21.75	26
24	C4-LUFL-27.75	22	C5-LUFL-27.75	25	C6-LUFL-27.75	32
30	C4-LUFL-33.75	25	C5-LUFL-33.75	30	C6-LUFL-33.75	37
36	C4-LUFL-39.75	29	C5-LUFL-39.75	35	C6-LUFL-39.75	43
42	C4-LUFL-45.75	33	C5-LUFL-45.75	39	C6-LUFL-45.75	49
48	C4-LUFL-51.75	37	C5-LUFL-51.75	44	C6-LUFL-51.75	54
54	C4-LUFL-57.75	41	C5-LUFL-57.75	48	C6-LUFL-57.75	60
60	C4-LUFL-63.75	45	C5-LUFL-63.75	53	C6-LUFL-63.75	66

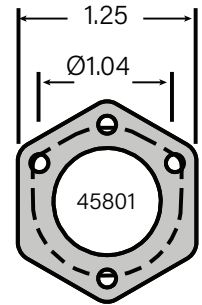
LUFF CEMA D TROUGHING

Belt Width	5" Roll Diameter		6" Roll Diameter	
	Part Number	Weight	Part Number	Weight
18	D5-LUTE-6.75	10	D6-LUTE-6.75	12
24	D5-LUTE-8.75	11	D6-LUTE-8.75	14
30	D5-LUTE-10.75	13	D6-LUTE-10.75	16
36	D5-LUTE-12.75	15	D6-LUTE-12.75	18
42	D5-LUTE-14.75	17	D6-LUTE-14.75	20
48	D5-LUTE-16.75	18	D6-LUTE-16.75	22
54	D5-LUTE-18.75	20	D6-LUTE-18.75	24
60	D5-LUTE-20.75	22	D6-LUTE-20.75	26

LUFF CEMA D RETURN

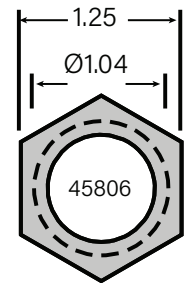
Belt Width	5" Roll Diameter		6" Roll Diameter	
	Part Number	Weight	Part Number	Weight
18	D5-LUFL-21.75	24	D6-LUFL-21.75	29
24	D5-LUFL-27.75	11	D6-LUFL-27.75	35
30	D5-LUFL-33.75	34	D6-LUFL-33.75	42
36	D5-LUFL-39.75	39	D6-LUFL-39.75	48
42	D5-LUFL-45.75	45	D6-LUFL-45.75	54
48	D5-LUFL-51.75	50	D6-LUFL-51.75	60
54	D5-LUFL-57.75	55	D6-LUFL-57.75	67
60	D5-LUFL-63.75	60	D6-LUFL-63.75	73

REXNORD CEMA C TROUGHING						
Belt Width	4" Roll Diameter		5" Roll Diameter		6" Roll Diameter	
	Part Number	Weight	Part Number	Weight	Part Number	Weight
18	C4-RXTE-7.00	6	C5-FMTE-6.69	8	C6-FMTE-6.69	10
24	C4-RXTE-9.00	7	C5-RXTE-9.00	10	C6-RXTE-9.00	12
30	C4-RXTE-11.00	9	C5-RXTE-11.00	11	C6-RXTE-11.00	14
36	C4-RXTE-13.00	10	C5-RXTE-13.00	13	C6-RXTE-13.00	16
42	C4-RXTE-15.00	11	C5-RXTE-15.00	14	C6-RXTE-15.00	18
48	C4-RXTE-17.00	12	C5-RXTE-17.00	16	C6-RXTE-17.00	20
54	C4-RXTE-19.00	14	C5-RXTE-19.00	17	C6-RXTE-19.00	21
60	C4-RXTE-21.00	15	C5-RXFL-21.00	19	C6-RXFL-21.00	29



ZINC

REXNORD CEMA C RETURN						
Belt Width	4" Roll Diameter		5" Roll Diameter		6" Roll Diameter	
	Part Number	Weight	Part Number	Weight	Part Number	Weight
18	C4-RXFL-21.00	15	C5-RXFL-21.00	19	C6-FMFL-20.62	23
24	C4-RXFL-27.00	19	C5-RXFL-27.00	23	C6-FMFL-26.62	29
30	C4-RXFL-33.00	23	C5-RXFL-33.00	28	C6-FMFL-32.62	35
36	C4-RXFL-39.00	28	C5-RXFL-39.00	19	C6-RXFL-21.00	29
42	C4-RXFL-45.00	30	C5-RXFL-45.00	24	C6-RXFL-27.00	29
48	C4-RXFL-51.00	34	C5-RXFL-51.00	28	C6-RXFL-33.00	35
54	C4-RXFL-57.00	38	C5-RXFL-57.00	33	C6-RXFL-39.00	41
60	N/A		C5-RXFL-63.00	40	C6-RXFL-45.00	46



STEEL

REXNORD CEMA D TROUGHING				
Belt Width	5" Roll Diameter		6" Roll Diameter	
	Part Number	Weight	Part Number	Weight
18	D5-RXTE-7.00	9	D6-RXTE-7.00	11
24	D5-RXTE-9.00	11	D6-RXTE-9.00	13
30	D5-RXTE-11.00	13	D6-RXTE-11.00	15
36	D5-RXTE-13.00	15	D6-RXTE-13.00	17
42	D5-RXTE-15.00	16	D6-RXTE-15.00	19
48	D5-RXTE-17.00	18	D6-RXTE-17.00	21
54	D5-RXTE-19.00	20	D6-RXTE-19.00	23
60	D5-RXFL-21.00	21	D6-RXFL-21.00	25

REXNORD CEMA D IMPACT			
5" Roll Diameter		6" Roll Diameter	
Part Number	Weight	Part Number	Weight
D5-RSTEI-7.00	9	D6-RSTEI-7.00	11
D5-RSTEI-9.00	12	D6-RSTEI-9.00	14
D5-RSTEI-11.00	14	D6-RSTEI-11.00	17
D5-RSTEI-13.00	17	D6-RSTEI-13.00	20
D5-RSTEI-15.00	20	D6-RSTEI-15.00	24
D5-RSTEI-17.00	22	D6-RSTEI-17.00	26
D5-RSTEI-19.00	24	D6-RSTEI-19.00	30
D5-RSTEI-21.00	26	D6-RSTEI-21.00	32

REXNORD CEMA D RETURN				
Belt Width	5" Roll Diameter		6" Roll Diameter	
	Part Number	Weight	Part Number	Weight
18	D5-RXFL-21.00	21	D6-RXFL-21.00	25
24	D5-RXFL-27.00	27	D6-RXFL-27.00	31
30	D5-RXFL-33.00	32	D6-RXFL-33.00	38
36	D5-RXFL-39.00	37	D6-RXFL-39.00	44
42	D5-RXFL-45.00	42	D6-RXFL-45.00	50
48	D5-RXFL-51.00	47	D6-RXFL-51.00	56
54	D5-RXFL-57.00	53	D6-RXFL-57.00	63
60	D5-RXFL-63.00	58	D6-RXFL-63.00	69

REXNORD CEMA D RUBBER DISC			
5" Roll Diameter		6" Roll Diameter	
Part Number	Weight	Part Number	Weight
D5-RSRI-21.00	23	D6-RSRI-21.00	27
D5-RSRI-27.00	27	D6-RSRI-27.00	31
D5-RSRI-33.00	32	D6-RSRI-33.00	36
D5-RSRI-39.00	36	D6-RSRI-39.00	41
D5-RSRI-45.00	41	D6-RSRI-45.00	46
D5-RSRI-51.00	45	D6-RSRI-51.00	51
D5-RSRI-57.00	50	D6-RSRI-57.00	56
D5-RSRI-63.00	54	D6-RSRI-63.00	61

STEPHENS-ADAMSON (SA)

SA CEMA C TROUGHING				
Belt Width	5" Roll Diameter		6" Roll Diameter	
	Part Number	Weight	Part Number	Weight
18	C5-SATE-6.88	11	C6-SATE-6.88	10
24	C5-SATE-8.94	13	C6-SATE-8.94	12
30	C5-SATE-11.00	14	C6-SATE-11.00	14
36	C5-SATE-13.13	16	C6-SATE-13.13	16
42	C5-SATE-15.18	18	C6-SATE-15.18	18
48	C5-SATE-17.25	20	C6-SATE-17.25	20
54	C5-SATE-19.31	22	C6-SATE-19.31	22
60	C5-SATE-21.44	24	C6-SATE-21.44	24

SA CEMA C RETURN				
Belt Width	5" Roll Diameter		6" Roll Diameter	
	Part Number	Weight	Part Number	Weight
18	C5-SAFL-23.25	21	C6-SAFL-23.25	26
24	C5-SAFL-29.25	25	C6-SAFL-29.25	32
30	C5-SAFL-35.25	30	C6-SAFL-35.25	37
36	C5-SAFL-41.25	35	C6-SAFL-41.25	43
42	C5-SAFL-47.25	39	C6-SAFL-47.25	47
48	C5-SAFL-53.25	44	C6-SAFL-53.25	52
54	C5-SAFL-59.25	48	C6-SAFL-59.25	60
60	C5-SAFL-65.25	53	C6-SAFL-65.25	66

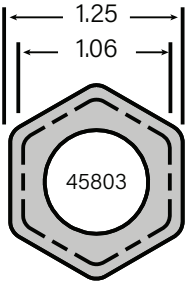
SA CEMA D TROUGHING				
Belt Width	5" Roll Diameter		6" Roll Diameter	
	Part Number	Weight	Part Number	Weight
18	D5-SATE-6.88	10	D6-SATE-6.88	11
24	D5-SATE-8.94	12	D6-SATE-8.94	14
30	D5-SATE-11.00	13	D6-SATE-11.00	16
36	D5-SATE-13.13	15	D6-SATE-13.13	18
42	D5-SATE-15.18	17	D6-SATE-15.18	20
48	D5-SATE-17.25	19	D6-SATE-17.25	22
54	D5-SATE-19.31	20	D6-SATE-19.31	24
60	D5-SATE-21.44	22	D6-SATE-21.44	27

SA CEMA D IMPACT			
5" Roll Diameter		6" Roll Diameter	
Part Number	Weight	Part Number	Weight
D5-SATEI-6.88	12	D6-SATEI-6.88	14
D5-SATEI-8.94	14	D6-SATEI-8.94	17
D5-SATEI-11.00	18	D6-SATEI-11.00	21
D5-SATEI-13.13	21	D6-SATEI-13.13	25
D5-SATEI-15.18	24	D6-SATEI-15.18	28
D5-SATEI-17.25	27	D6-SATEI-17.25	32
D5-SATEI-19.31	31	D6-SATEI-19.31	36
D5-SATEI-21.44	33	D6-SATEI-21.44	39

SA CEMA D RETURN				
Belt Width	5" Roll Diameter		6" Roll Diameter	
	Part Number	Weight	Part Number	Weight
18	D5-SAFL-23.25	24	D6-SAFL-23.25	29
24	D5-SAFL-29.25	29	D6-SAFL-29.25	35
30	D5-SAFL-35.25	34	D6-SAFL-35.25	51
36	D5-SAFL-41.25	39	D6-SAFL-41.25	48
42	D5-SAFL-47.25	44	D6-SAFL-47.25	54
48	D5-SAFL-53.25	50	D6-SAFL-53.25	60
54	D5-SAFL-59.25	55	D6-SAFL-59.25	66
60	D5-SAFL-65.25	60	D6-SAFL-65.25	73

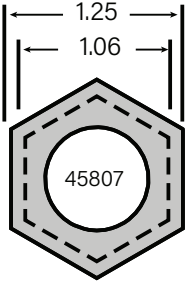
SA CEMA D RUBBER DISC			
5" Roll Diameter		6" Roll Diameter	
Part Number	Weight	Part Number	Weight
D5-SARI-21.25	30	D6-SARI-21.25	34
D5-SARI-27.25	37	D6-SARI-27.25	42
D5-SARI-33.25	43	D6-SARI-33.25	48
D5-SARI-39.25	49	D6-SARI-39.25	55
D5-SARI-45.25	56	D6-SARI-45.25	61
D5-SARI-51.25	62	D6-SARI-51.25	68
D5-SARI-57.25	68	D6-SARI-57.25	74
D5-SARI-63.25	74	D6-SARI-63.25	81

SUPERIOR CEMA C TROUGHING						
Belt Width	4" Roll Diameter		5" Roll Diameter		6" Roll Diameter	
	Part Number	Weight	Part Number	Weight	Part Number	Weight
18	C4-SUTE-7.06	7	C5-SUTE-7.06	8	C6-SUTE-7.06	10
24	C4-SUTE-9.06	8	C5-SUTE-9.06	10	C6-SUTE-9.06	12
30	C4-SUTE-11.06	9	C5-SUTE-11.06	11	C6-SUTE-11.06	14
36	C4-SUTE-13.06	10	C5-SUTE-13.06	13	C6-SUTE-13.06	16
42	C4-SUTE-15.06	12	C5-SUTE-15.06	14	C6-SUTE-15.06	18
48	C4-SUTE-17.06	13	C5-SUTE-17.06	16	C6-SUTE-17.06	20
54	C4-SUTE-19.06	14	C5-SUTE-19.06	17	C6-SUTE-19.06	21
60	C4-SUTE-21.06	15	C5-SUTE-21.06	19	C6-SUTE-21.06	23



ZINC

SUPERIOR CEMA C RETURNS						
Belt Width	4" Roll Diameter		5" Roll Diameter		6" Roll Diameter	
	Part Number	Weight	Part Number	Weight	Part Number	Weight
18	C4-SUFL-21.31	16	C5-SUFL-21.31	19	C6-SUFL-21.31	24
24	C4-SUFL-27.31	19	C5-SUFL-27.31	24	C6-SUFL-27.31	29
30	C4-SUFL-33.31	23	C5-SUFL-33.31	28	C6-SUFL-33.31	35
36	C4-SUFL-39.31	27	C5-SUFL-39.31	33	C6-SUFL-39.31	41
42	C4-SUFL-45.31	31	C5-SUFL-45.31	37	C6-SUFL-45.31	46
48	C4-SUFL-51.31	35	C5-SUFL-51.31	42	C6-SUFL-51.31	52
54	C4-SUFL-57.31	38	C5-SUFL-57.31	47	C6-SUFL-57.31	58
60	C4-SUFL-63.31	42	C5-SUFL-63.31	51	C6-SUFL-63.31	63



STEEL

SUPERIOR CEMA D TROUGHING				
Belt Width	5" Roll Diameter		6" Roll Diameter	
	Part Number	Weight	Part Number	Weight
18	D5-SUTE-7.06	9	D6-SUTE-7.06	11
24	D5-SUTE-9.06	11	D6-SUTE-9.06	13
30	D5-SUTE-11.06	13	D6-SUTE-11.06	15
36	D5-SUTE-13.06	15	D6-SUTE-13.06	17
42	D5-SUTE-15.06	16	D6-SUTE-15.06	19
48	D5-SUTE-17.06	18	D6-SUTE-17.06	21
54	D5-SUTE-19.06	20	D6-SUTE-19.06	23
60	D5-SUTE-21.06	21	D6-SUTE-21.06	25

SUPERIOR CEMA D IMPACT			
5" Roll Diameter		6" Roll Diameter	
Part Number	Weight	Part Number	Weight
D5-SSTEI-7.06	9	D6-SSTEI-7.06	11
D5-SSTEI-9.06	12	D6-SSTEI-9.06	14
D5-SSTEI-11.06	14	D6-SSTEI-11.06	17
D5-SSTEI-13.06	17	D6-SSTEI-13.06	20
D5-SSTEI-15.06	20	D6-SSTEI-15.06	24
D5-SSTEI-17.06	22	D6-SSTEI-17.06	26
D5-SSTEI-19.06	24	D6-SSTEI-19.06	30
D5-SSTEI-21.06	26	D6-SSTEI-21.06	32

SUPERIOR CEMA D RETURN				
Belt Width	5" Roll Diameter		6" Roll Diameter	
	Part Number	Weight	Part Number	Weight
18	D5-SUFL-21.31	22	D6-SUFL-21.31	25
24	D5-SUFL-27.31	27	D6-SUFL-27.31	32
30	D5-SUFL-33.31	32	D6-SUFL-33.31	38
36	D5-SUFL-39.31	37	D6-SUFL-39.31	44
42	D5-SUFL-45.31	42	D6-SUFL-45.31	50
48	D5-SUFL-51.31	48	D6-SUFL-51.31	57
54	D5-SUFL-57.31	53	D6-SUFL-57.31	63
60	D5-SUFL-63.31	58	D6-SUFL-63.31	69

SUPERIOR CEMA D RUBBER DISC			
5" Roll Diameter		6" Roll Diameter	
Part Number	Weight	Part Number	Weight
D5-SSRI-19.88	23	D6-SSRI-19.88	27
D5-SSRI-26.13	27	D6-SSRI-26.13	32
D5-SSRI-31.75	32	D6-SSRI-31.75	36
D5-SSRI-38.38	36	D6-SSRI-38.38	41
D5-SSRI-44.00	41	D6-SSRI-44.00	46
D5-SSRI-50.25	45	D6-SSRI-50.25	51
D5-SSRI-55.88	50	D6-SSRI-55.88	56
D5-SSRI-62.50	55	D6-SSRI-62.50	61

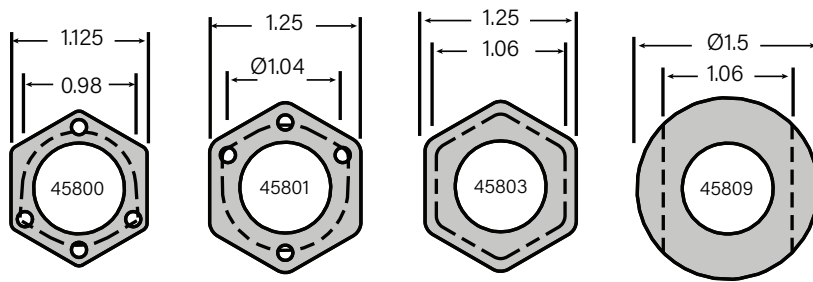
TRANSALL – DBT RETRO ROLLS

DBT CEMA D TROUGHING				
Belt Width	5" Roll Diameter		6" Roll Diameter	
	Part Number	Weight	Part Number	Weight
18	D5-TRTE-6.63	9	D6-TRTE-6.63	13
24	D5-TRTE-8.75	11	D6-TRTE-8.75	15
30	D5-TRTE-10.81	13	D6-TRTE-10.81	17
36	D5-TRTE-12.88	15	D6-TRTE-12.88	19
42	D5-TRTE-15.00	17	D6-TRTE-15.00	21
48	D5-TRTE-17.06	18	D6-TRTE-17.06	23
54	D5-TRTE-19.13	20	D6-TRTE-19.13	25
60	D5-TRTE-21.25	22	D6-TRTE-21.25	27

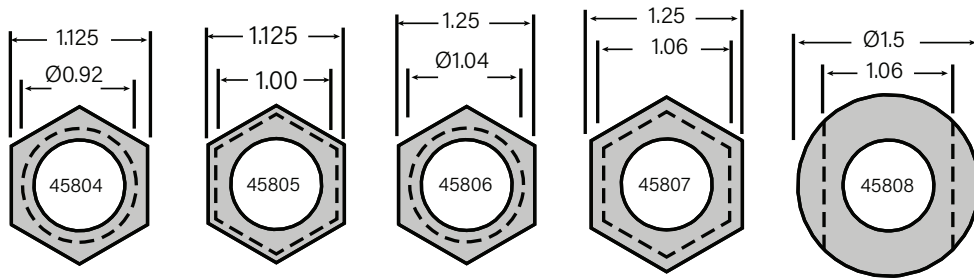
DBT CEMA D RETURNS				
Belt Width	5" Roll Diameter		6" Roll Diameter	
	Part Number	Weight	Part Number	Weight
18	D5-TRFL-20.68	13	D6-TRFL-20.68	30
24	D5-TRFL-26.68	27	D6-TRFL-26.68	36
30	D5-TRFL-32.68	32	D6-TRFL-32.68	43
36	D5-TRFL-38.68	37	D6-TRFL-38.68	49
42	D5-TRFL-44.68	42	D6-TRFL-44.68	55
48	D5-TRFL-50.68	47	D6-TRFL-50.68	61
54	D5-TRFL-56.68	53	D6-TRFL-56.68	68
60	D5-TRFL-62.68	58	D6-TRFL-62.68	74

C/D ADAPTER DIMENSIONS

ZINC



STEEL



RETRO ROLL DATA SHEET

Company: _____

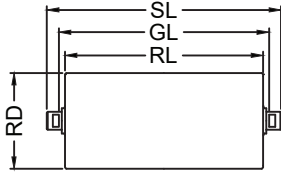
Location: _____

Contact: _____

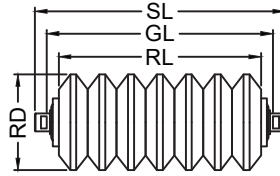
Phone #: _____

Email: _____

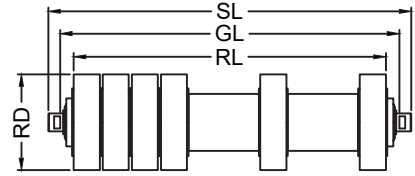
CHOOSE ROLL TYPE



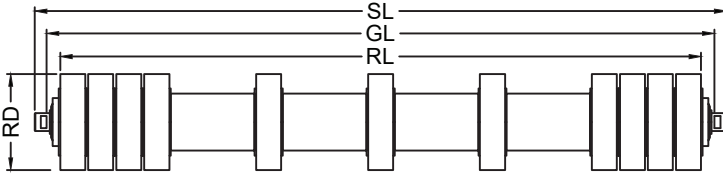
- Steel Roll Stainless Roll
 Aluminum Roll Plastic Roll



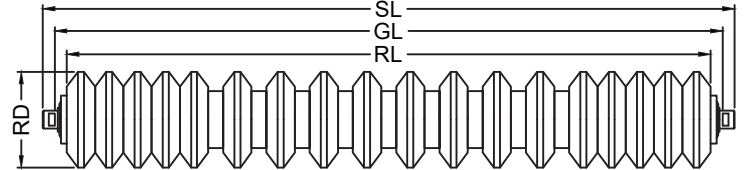
Impact Roll



Rubber Disc V-Return



Rubber Disc Flat Return



Rubber Disc Carrying

PROVIDE ROLL DETAIL

Requested Quantity _____

Roll Diameter - RD _____

Roll Length - RL _____

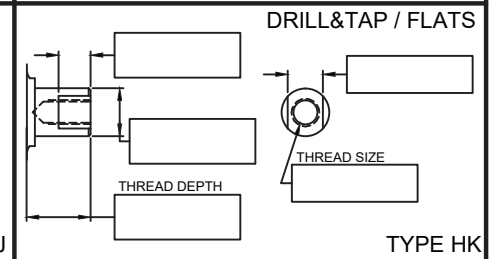
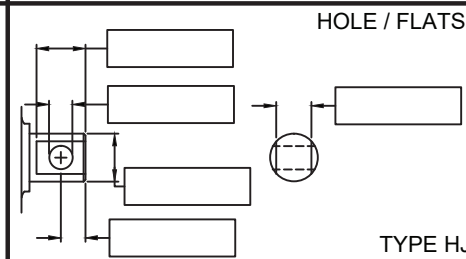
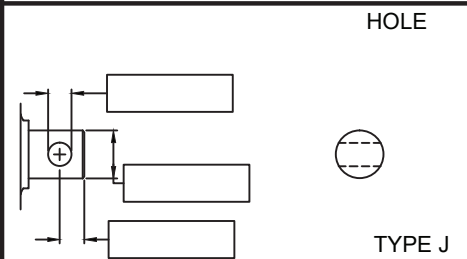
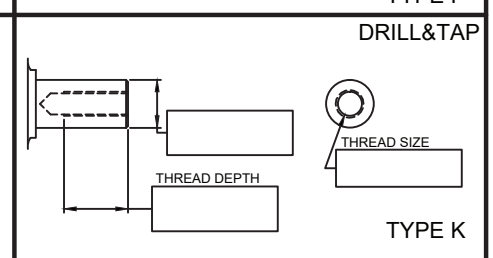
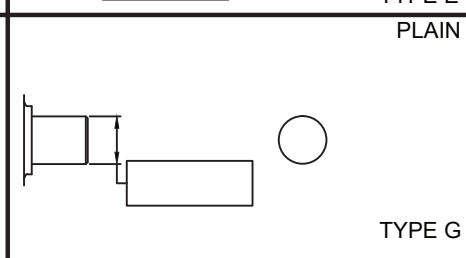
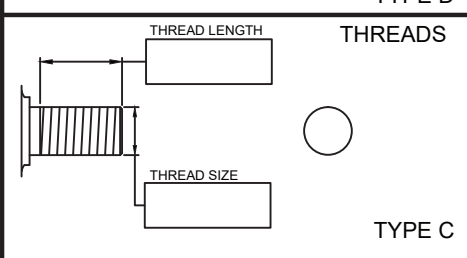
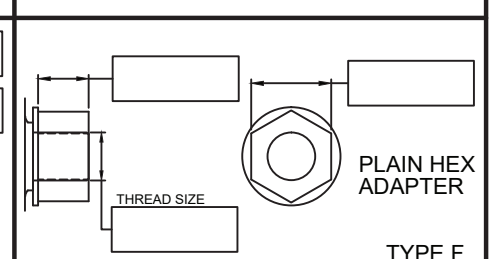
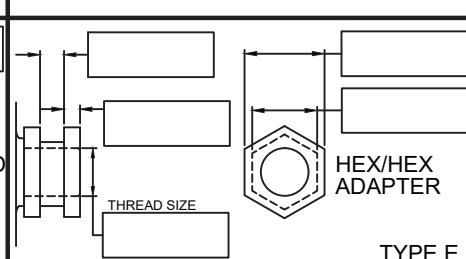
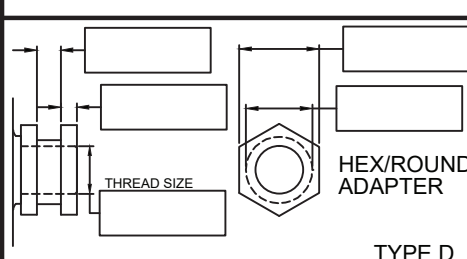
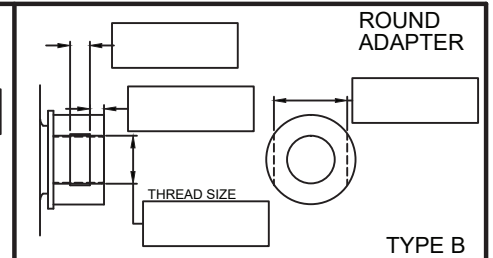
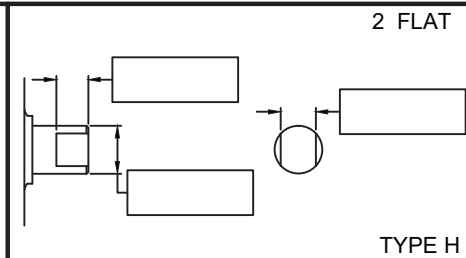
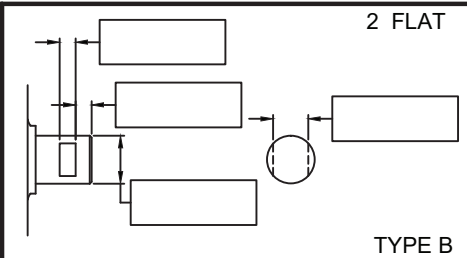
Bearing Size Optional _____

Shaft Length - SL _____

Gage Length - GL _____

Shaft Diameter at
Center Optional _____

CHOOSE SHAFT END TYPE AND PROVIDE SHAFT END DETAIL





PPI[®]

WWW.PPI-GLOBAL.COM | SALES@PPI-GLOBAL.COM

Product shown are for illustrative purposes only and may display optional accessories or components. Please contact your sales representative for more information on product specifications. PPI respectively reserves the right to make changes in engineering, design and specifications; add improvements; or discontinue manufacturing at any time without notice obligation. PPI and its respective logos are trademarks of Precision, Inc. in the US and or other countries.

Copyright ©2022 Precision Pulley & Idler, all rights reserved.